

68

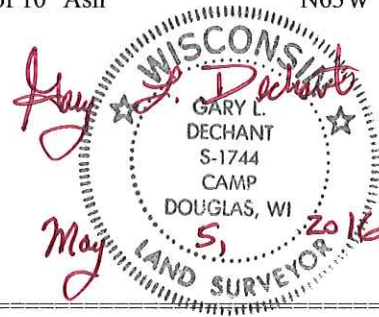
**U.S. PUBLIC LAND CORNER
MAINTENANCE**

Corner ID : S1/4 Sec. 16, T16N-R2W

21602160020

<u>DATE</u>	<u>CREW</u>	<u>MONUMENT TYPE</u> -----
May 5, 2016	Zachariah P. Dechant Gary L. Dechant	Found Harrison intact at fence corner

<u>References:</u>	<u>Bearing</u>	<u>Distance</u>
1) Set 3/4"x24" round iron bar, down 6", 4' east of 10" Maple	N3E	31.71'
2) Set 3/4" x 24" round iron bar, down 6", in line with power line	N62E	31.65'
3) Set 3/4" x24" round iron bar, down 6", 3' east of 3" Maple	S61W	37.02
4) Set 3/4" x 24" round iron bar, down 6", 4' south of 10" Ash	N63W	36.21



I, William C. Jung, do hereby certify that on the 18th day of October 1976, I found (evidence) ~~(no evidence)~~ of the S 1/4 corner of Section 16, T 16 N, R 2 W, Fourth Principal Meridian, and I re-established said corner according to the Wisconsin Statutes as shown and described hereon.

History of original corner establishment:

See Reverse Side For Maintenance

Description of corner evidence found:

Dated this 7th day of Feb. 1978.

William C. Jung, R.L.S. 1323

Found a Harrison Monument set by Marten on November 11, 1974. He replaced a 3/4" iron bar with this Harrison marker.

Crew Chief, County Surveyor's
Title Office

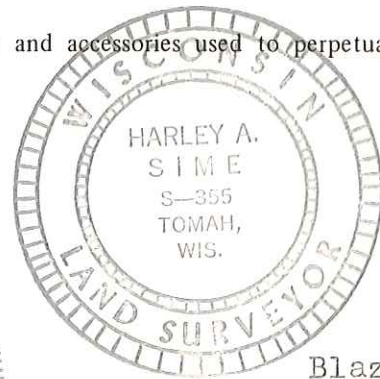
Description of corner and witness monuments, references and accessories used to perpetuate the original or re-established location of this corner:

Witnesses to corner location:

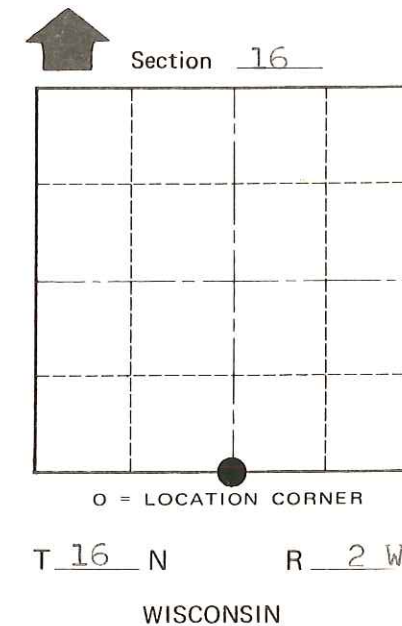
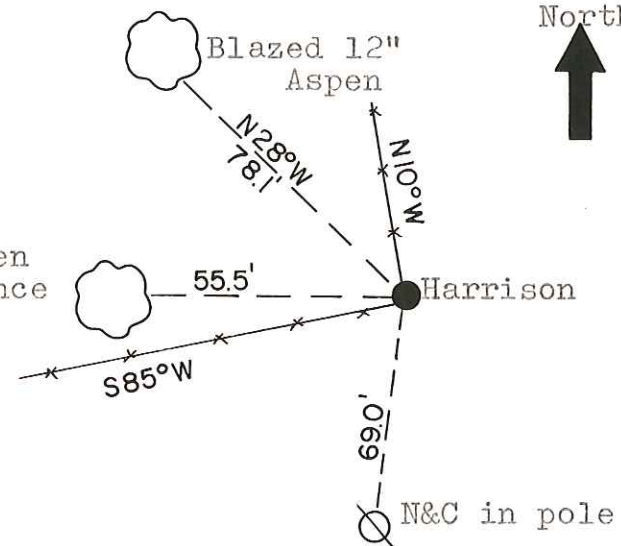
W. Jung

B. Rasmussen

A. Lueck



Blazed 10" Aspen
2' north of fence



SURVEY CONTROL ORDER

Approved by: Harley A. Sime
County Surveyor

Horizontal _____
Vertical _____

WISCONSIN COORDINATE SYSTEM

Corner	East (X)	North (Y)	Elevation (Z)	Zone
Control Sta. Name				

City, Village or Town Ridgeville

County of Monroe

COUNTY SURVEYOR FORM NO. 1