

CERTIFICATE

CERTIFIED LAND CORNER

No. 58

**21602152000**

I, Harley A. Sime, do hereby certify that on the 11th day of November 1974, I found (evidence) (~~no evidence~~) of the E 1/4 corner of Section 15, T 16 N, R 2 W Fourth Principal Meridian, and I re-established said corner according to the Wisconsin Statutes as shown and described hereon.

History of original corner establishment:

**Approved: HARLEY A. SIME  
MONROE CO. SURVEYOR**

Description of corner evidence found:

Dated this 7th day of Feb. 1978.

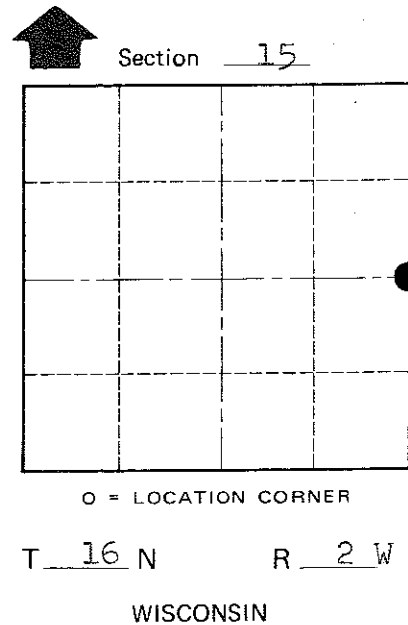
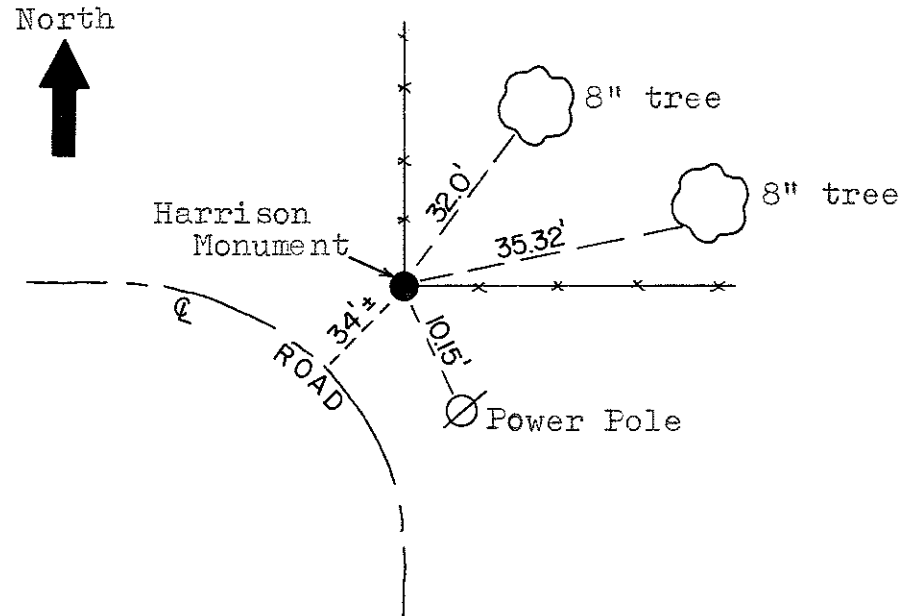
Reset an existing 3/4" iron bar with a Harrison Monument. The Harrison was set flush with the ground.

County Surveyor  
Title

Description of corner and witness monuments, references and accessories used to perpetuate the original or re-established location of this corner:

Witnesses to corner location:

D. Marten



COUNTY SURVEYOR FORM NO. 1

SURVEY CONTROL ORDER

Horizontal	_____
Vertical	_____

WISCONSIN COORDINATE SYSTEM

Corner	East (X)	North (Y)	Elevation (Z)	Zone
Control Sta. Name				

City, Village or Town Ridgeville  
County of Monroe