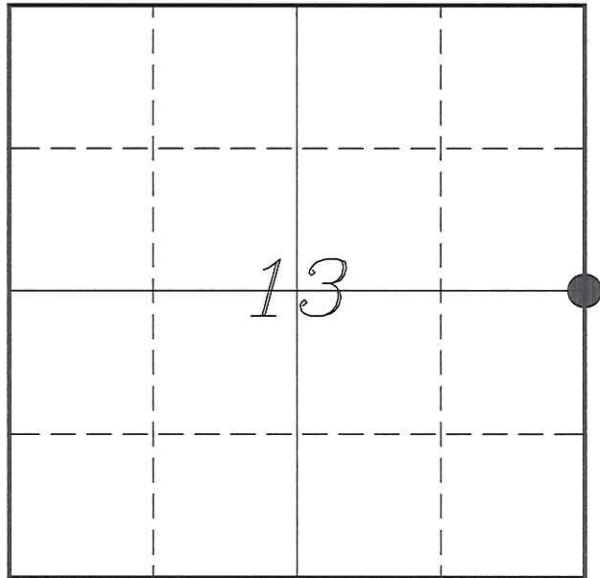


U. S. PUBLIC LAND SURVEY MONUMENT RECORD

SECTION 13, T16N, R2W, TOWN OF RIDGEVILLE
MONROE COUNTY, WISCONSIN



LOCATION OF LANDMARK

Witnesses: Larry Handschy

Date: 7 November 2013

MONROE COUNTY COORDINATE SYSTEM	
Northing	350202.900
Easting	694685.811
Datum	NAD 1983 (1991)
Elevation	
Datum	
TYPE OF LANDMARK:	
Existing Harrison Monument	
BEARINGS ARE REFERENCED TO:	
Monroe County Coordinates	

Describe any record evidence, monument evidence, testimonial evidence or any other material evidence you considered and whether the monument was found or restored through acceptance of an obliterated evidence location.

No bearing trees of record were located.

Using a computed location, we found the Harrison Monument shown on Carroll's survey.

This location is 1.5'± West and 2.0'± South of straight line and equal distance between section corners.

There is no record of where or when this corner originated from.

It appears the corner may have been intended to be set on a straight line and on the East/West fence.

I accepted this monument as the best available evidence of the original government corner.

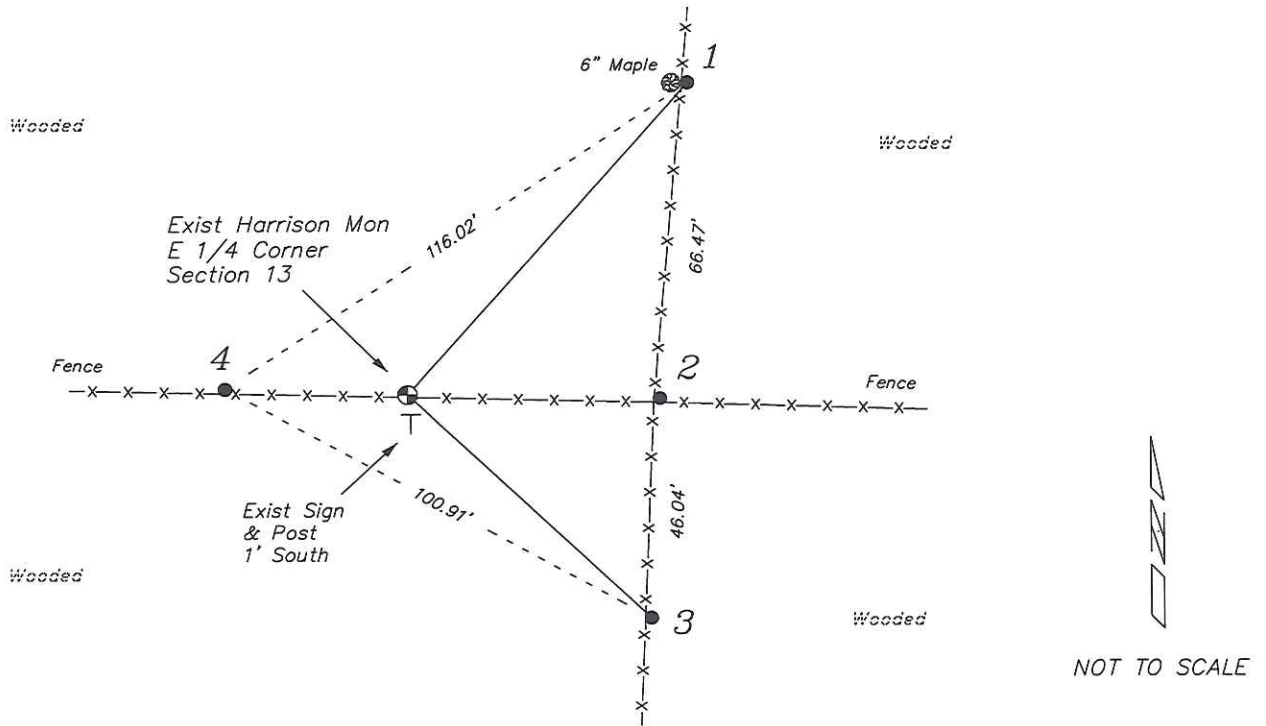
Describe or show any material discrepancy between the location of the restored corner and that of the corner previously restored or re-established.

Uriah Biggs established this corner in October 1845.

Patrick Carroll was at this corner, in December 1998, during several surveys in Section 18 of Wilton. He shows that he found a Harrison Monument.

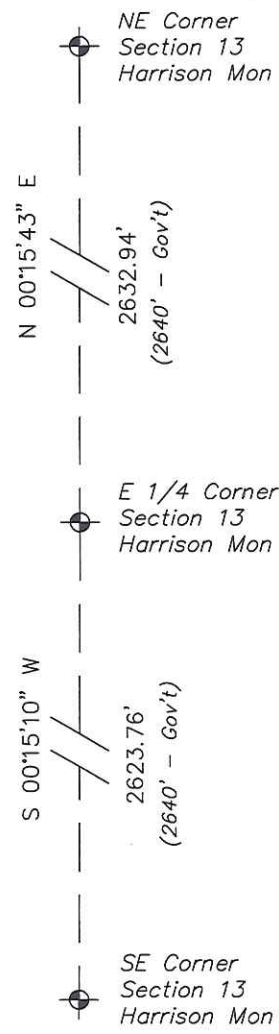
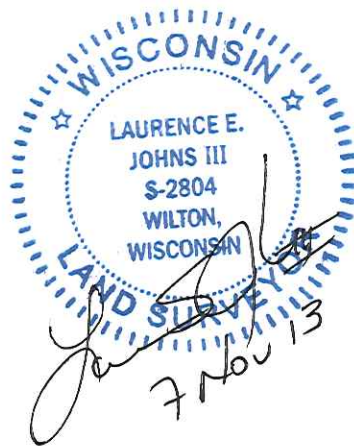
RECORD OF DURABLE WITNESS MONUMENTS

NO	DESCRIPTION	BEARING	DISTANCE
1	Set 3/4" x 18" Iron Rod In Fence Line - 1' East of 6" Maple	N 42°01'02" E	87.82'
2	Set 3/4" x 18" Iron Rod At 4-way Fence Corner	S 88°58'58" E	52.65'
3	Set 3/4" x 18" Iron Rod In Fence Line	S 47°07'13" E	68.97'
4	Set 3/4" x 18" Iron Rod In Fence Line	N 87°56'41" W	38.09'



PLAN VIEW DRAWING OF REFERENCE TIES

Map Showing Distance And Direction To Other Public Land Survey
Corners Used For Re-Establishing The Corner



I, Laurence E Johns III RLS 2804, Registered Land Surveyor, hereby certify that the corner location shown on this record was determined by me or under my direction and control, and that this U.S. Public Land Survey Monument Record is correct and complete to the best of my knowledge and belief.

Laurence E. Johns III
 Laurence E Johns III RLS 2804
 Eagle Ridge Surveying, LLC
 PO Box 213
 Wilton, Wisconsin
 7 November 2013