

21602122020

I, William C. Jung, do hereby certify that on the 12th day of August 19 80, I found (evidence) ~~XXXXXXXXXX~~ of the Center 1/4 corner of Section 12, T 16 N, R 2 W Fourth Principal Meridian, and I re-established said corner according to the Wisconsin Statutes as shown and described hereon.

History of corner establishment since Original Government Survey

O.R. Dahl set this corner in an irregular fashion in June of 1868.

Description of corner evidence found:

Reset the corner as Dahl did in 1868. Field evidence supports this method. The corner was set on line and equidistant between the North and South 1/4 corners. Set a 1 1/4"x30" iron bar.

Dated this 9th day of Feb. 19 81.

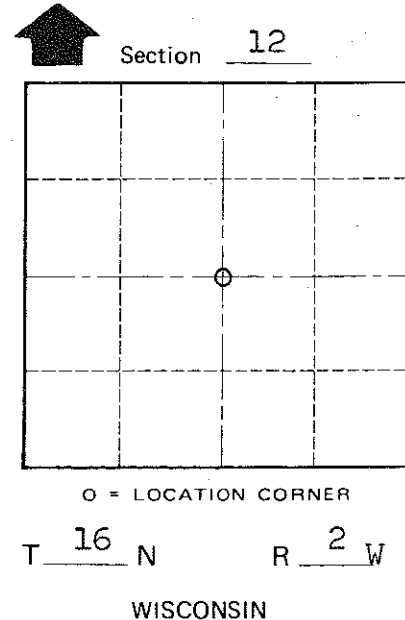
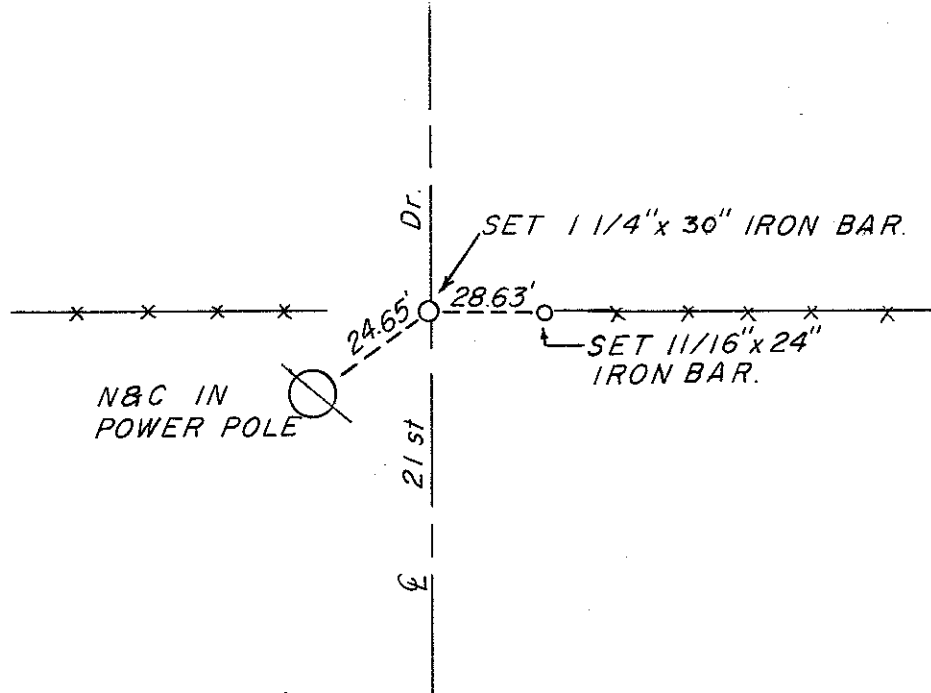
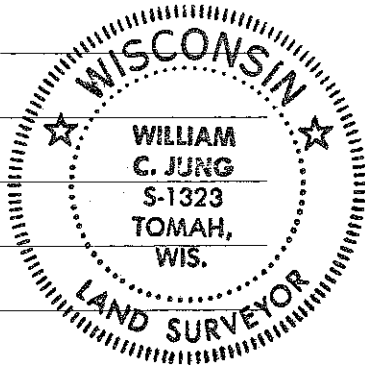
William C. Jung
William C. Jung, R.L.S. 1323
Title

**Approved: HARLEY A. SIME
MONROE CO. SURVEYOR**

Description of corner and witness monuments, references and accessories used to perpetuate the original or re-established location of this corner:

Witnesses to corner location:

William Jung
Carl Pietz
Gary Dechant



COUNTY SURVEYOR FORM NO. 1

SURVEY CONTROL ORDER

Horizontal _____
Vertical _____

WISCONSIN COORDINATE SYSTEM

Corner	East (X)	North (Y)	Elevation (Z)	Zone
Control Sta. Name				

~~City, Village~~ Town Ridgeville
County of Monroe
Wisconsin