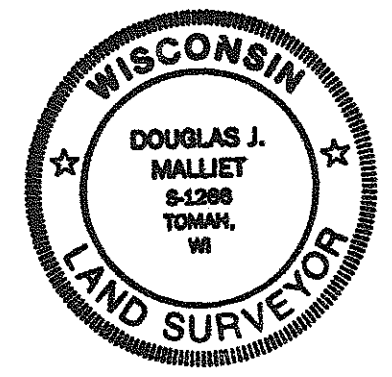


21602242000



I, Douglas J. Malliet, do hereby certify that on the 11th day of November 1994, I found (evidence) (REESTABLISHED) of the East 1/4 corner of Section 24, T 16 N, R 2 W Fourth Principal Meridian, and I re-established said corner according to the Wisconsin Statutes as shown and described hereon.

Dated this 18th day of November 1994.

Douglas J. Malliet
Registered Land Surveyor
Title

History of corner establishment since Original Government Survey

Nothing recorded.

Description of corner evidence found:

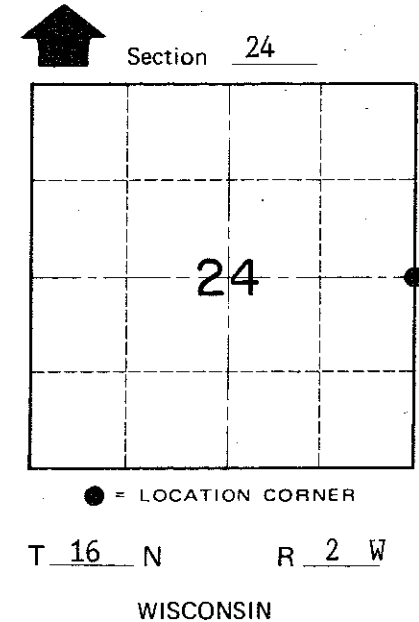
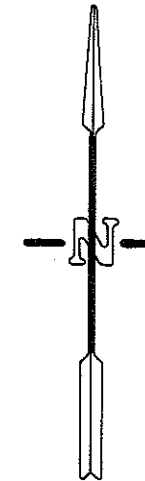
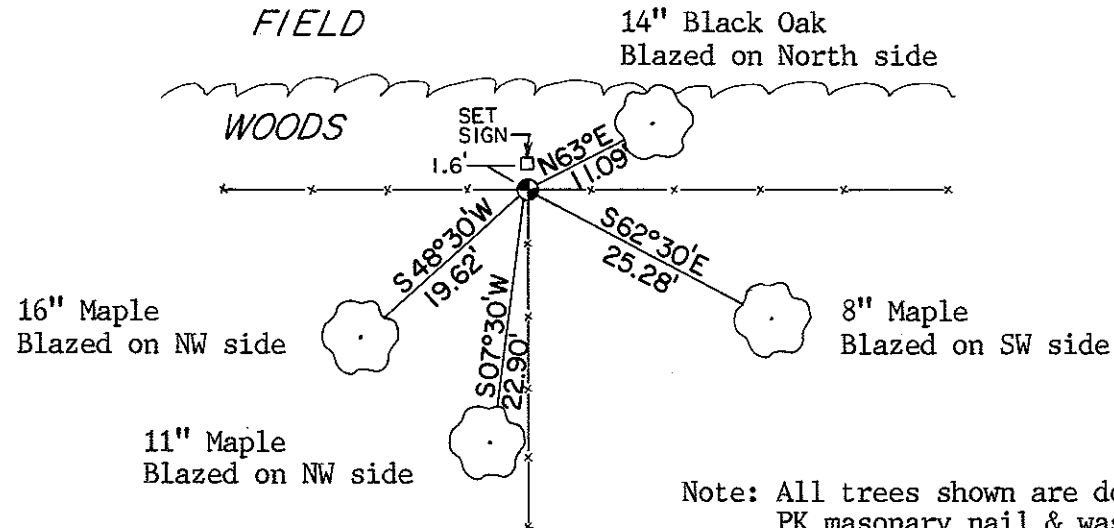
I accepted the three-way fence corner as the best available evidence.

Description of corner and witness monuments, references and accessories used to perpetuate the original or re-established location of this corner:

Set cast iron T.C.P. Monument at corner.

Witnesses to corner location:

Douglas J. Malliet
Lawrence A. Feddersen
Timothy J. Jeatran



Note: All trees shown are double blazed with PK masonry nail & washer in bottom blaze. All measurements are to the PK nail.

SURVEY CONTROL ORDER

Horizontal
Vertical

WISCONSIN COORDINATE SYSTEM

Table with 5 columns: Corner, East (X), North (Y), Elevation (Z), Zone. Row 1: Control Sta. Name

City, Village or Town of Ridgeville
County of Monroe

COUNTY SURVEYOR FORM NO. 1