

CERTIFICATE

CERTIFIED LAND CORNER

No. 83

21602230000

I, Garold A. Sime, do hereby certify that on the 15th day of July 1992, I found (evidence) ~~(no evidence)~~ of the Northwest corner of Section 25, T 16 N, R 2W Fourth Principal Meridian, and I re-established said corner according to the Wisconsin Statutes as shown and described hereon.

Dated this 17th day of July 1992.

Garold A. Sime

Monroe County Surveyor
Title

History of corner establishment since Original Government Survey

No recorded history of corner since the Original Government Survey

Description of corner evidence found:

I accepted the intersection of the fence lines projected as the best available evidence of corner location.

COUNTY SURVEYOR FORM NO. 1

Description of corner and witness monuments, references and accessories used to perpetuate the original or re-established location of this corner:

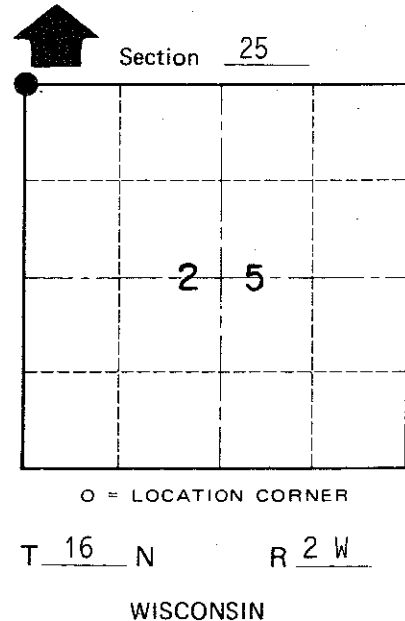
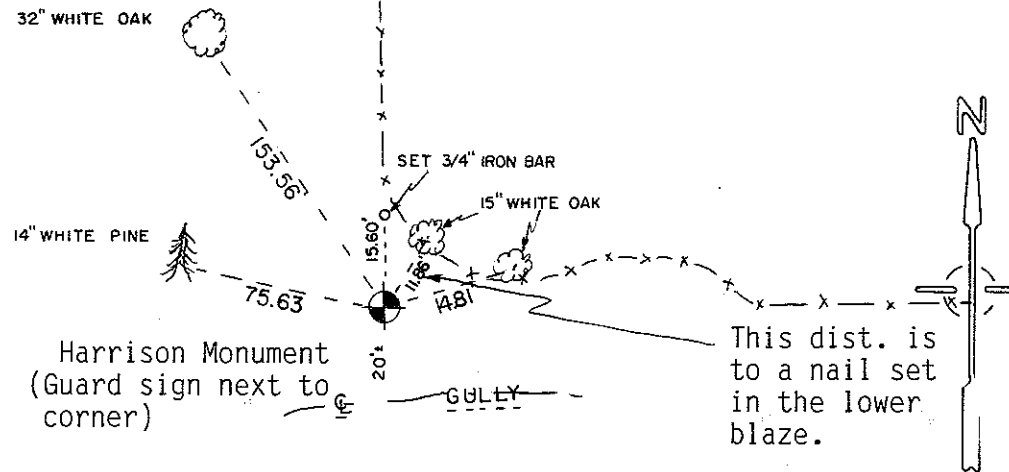
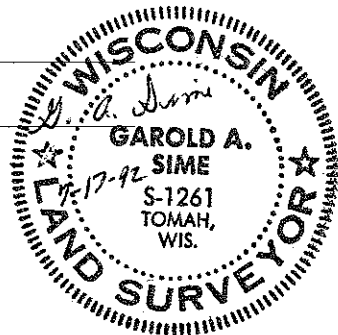
Set cast iron Harrison Monument at corner.
Set guard sign next to corner.

Witnesses to corner location:

Garold A. Sime, R.L.S.

John Kenworthy

Brent Kostka



Trees are double blazed and the distances shown are to a nail set in a hack in the side of the tree except where noted.

SURVEY CONTROL ORDER

Horizontal _____
Vertical _____

WISCONSIN COORDINATE SYSTEM

Corner	East (X)	North (Y)	Elevation (Z)	Zone
Control Sta. Name				

City, Village or Town of Ridgeville
County of Monroe