

21602220020

I, Garold A. Sime, do hereby certify that on the 15th day of July 1992, I found (evidence) ~~(no evidence)~~ of the N/4 corner of Section 27, T 16 N, R 2W Fourth Principal Meridian, and I re-established said corner according to the Wisconsin Statutes as shown and described hereon.

Dated this 17th day of July 1992.

Garold A. Sime

Monroe County Surveyor  
Title

History of corner establishment since Original Government Survey

Fred Zietlow set an iron bar at a fence corner at this location in April of 1973. A. S. Ingalls was at this corner in 1873.

Description of corner evidence found:

I found Zietlow's iron bar and accepted same for corner location. Replaced iron bar with a cast iron Harrison Monument.

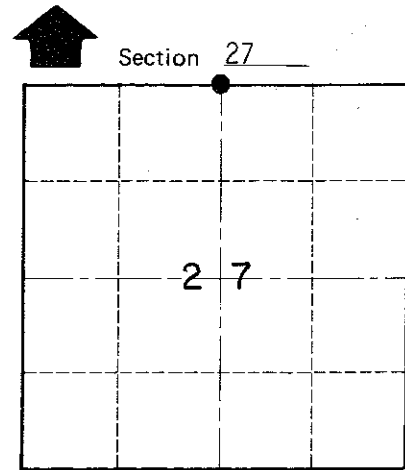
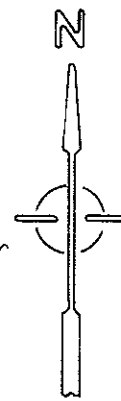
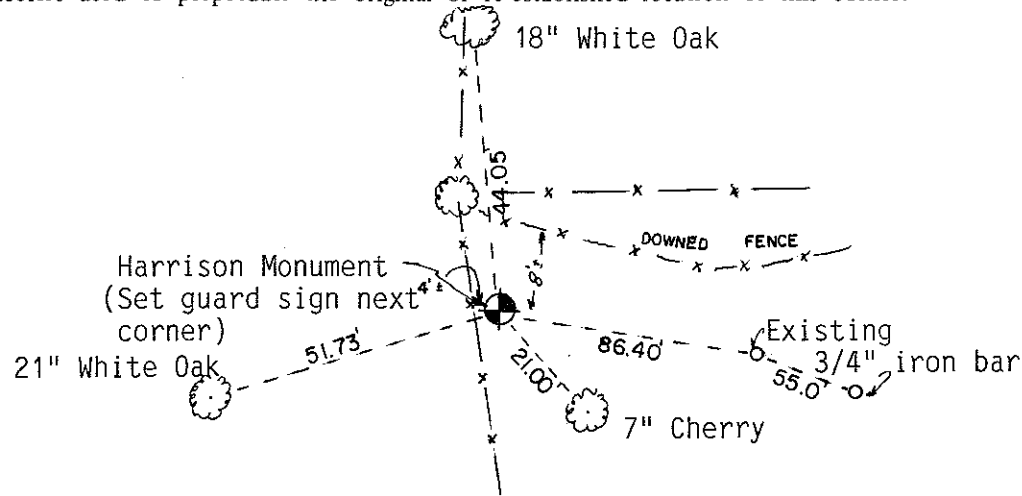
COUNTY SURVEYOR FORM NO. 1

Description of corner and witness monuments, references and accessories used to perpetuate the original or re-established location of this corner:

Set cast iron Harrison Monument at corner.

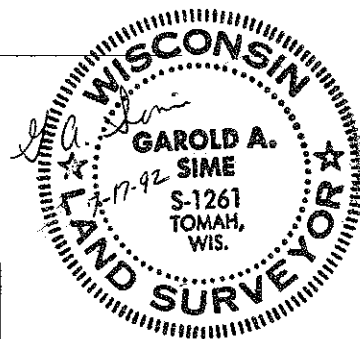
Witnesses to corner location:

Garold A. Sime, R.L.S.  
John Kenworthy  
Brent Kostka



T 16 N R 2W  
WISCONSIN

Trees are double blazed and distance shown is to a nail set in a hack in the side of the tree.



SURVEY CONTROL ORDER

Horizontal \_\_\_\_\_  
Vertical \_\_\_\_\_

WISCONSIN COORDINATE SYSTEM

Corner	East (X)	North (Y)	Elevation (Z)	Zone
Control Sta. Name				

~~City, Village~~ or Town of Ridgeville  
County of Monroe