

CERTIFICATE

CERTIFIED LAND CORNER

No. 85

21602220000

I, Garold A. Sime, do hereby certify that on the 15th day of July 1992, I found ~~(evidence)~~ (no evidence) of the Northeast corner of Section 27, T 16 N, R 2 W Fourth Principal Meridian, and I re-established said corner according to the Wisconsin Statutes as shown and described hereon.

History of corner establishment since Original Government Survey

A. S. Ingalls was at this corner in 1873.

Description of corner evidence found:

I established this corner in the old east - west fence line and at the prorated distance between the N $\frac{1}{4}$  corner of Sec. 26 and the N $\frac{1}{4}$  corner of Sec.27.

Dated this 17th day of July 1992.

Garold A. Sime

Monroe County Surveyor  
Title

COUNTY SURVEYOR FORM NO. 1

Description of corner and witness monuments, references and accessories used to perpetuate the original or re-established location of this corner:

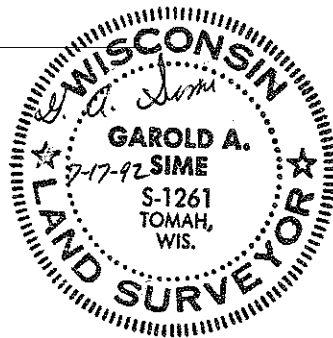
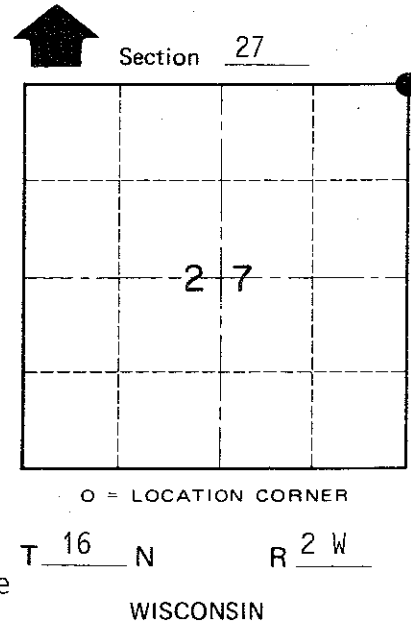
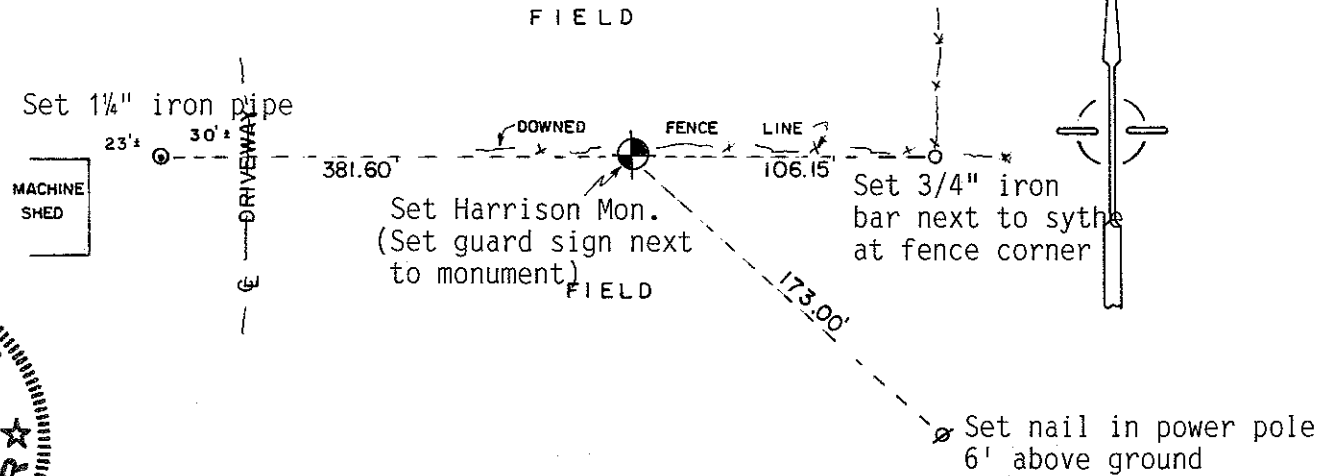
Set cast iron Harrison Monument at corner.  
Set Guard sign next to monument.

Witnesses to corner location:

Garold A. Sime, R.L.S.

John Kenworthy

Brent Kostka



SURVEY CONTROL ORDER

Horizontal	_____
Vertical	_____

WISCONSIN COORDINATE SYSTEM

Corner	East (X)	North (Y)	Elevation (Z)	Zone
Control Sta. Name				

~~City, Village~~ or Town of Ridgeville  
County of Monroe