

CERTIFICATE

I, Laurence E Johns III, do hereby certify that on the 26th day of June, 2009, I found ~~(evidence)~~ (no evidence) of the N 1/4 Corner of Section 29, T16N, R2W, Fourth Principle Meridian, and I re-established said corner according to the Wisconsin Statutes as shown and described hereon.

CERTIFIED LAND CORNER

History of corner establishment since Original Government Survey

R Maxwell placed a 3/4" Iron Rod at this corner in August 1998.

J Schmitz was here in 2007 and found Maxwell's corner.

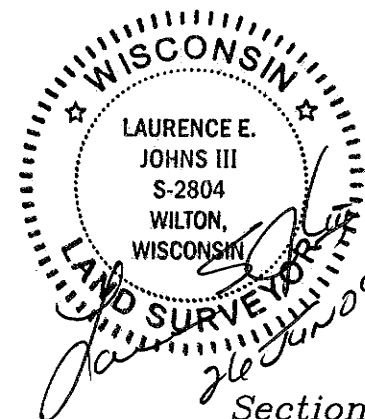
Description of corner evidence found:

Found Maxwell's Iron Rod and replaced it with a Harrison Monument.

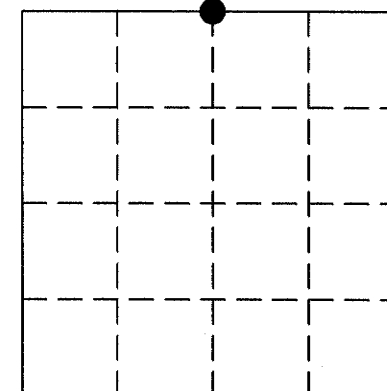
Dated this 26th day of June, 2009.

Laurence E Johns III

Laurence E Johns III RLS 2804
Eagle Ridge Surveying
PO Box 213
Wilton, WI 54670



Section 29



● = LOCATION CORNER
T16N R2W
WISCONSIN

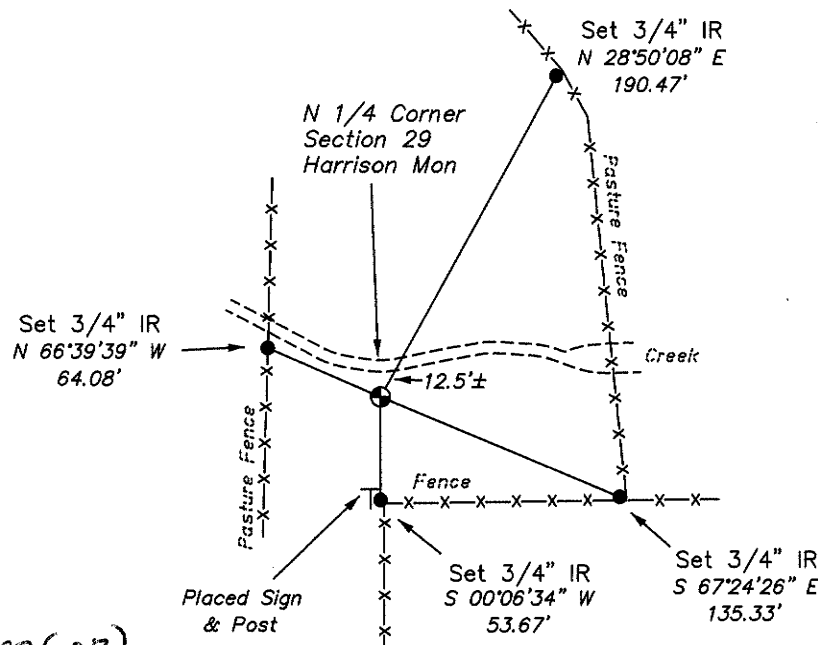
COUNTY SURVEYOR FORM NO. 1

Description of corner and witness monuments, references and accessories used to perpetuate the original or re-established location of this corner:

Witness to corner location:

Laurence E Johns III

Larry Handschy



to NAD 83(07)
MONROE COUNTY COORDINATE SYSTEM

SURVEY CONTROL ORDER

| | | | | | |
|-------------------|--|--|---------------|------|--|
| Horizontal | | | | | |
| Vertical | | | | | |
| Corner | East North 6.S. 342290.109 | North East 6.S. 670949.196 | Elevation (Z) | Zone | |
| Control Sta. Name | | | | | |

City, Village or Town Ridgeville

County of Monroe