

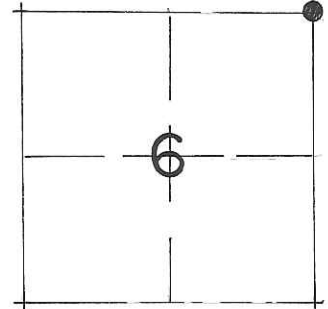
U.S. Land Survey Monument Record

Corner No. 21602310000

Section 6
Town 15N
Range 2W
NE Corner

Type of Monument: Unrecorded Cast Iron TCP Monument

County Coordinates:



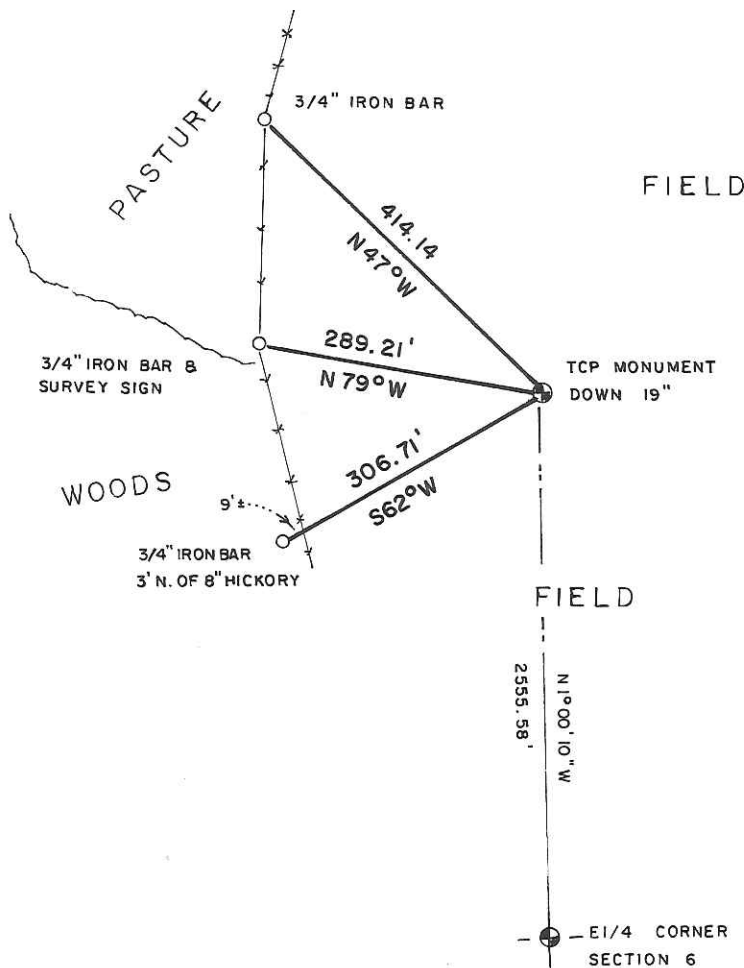
Witnesses: Zachariah P. Dechant

Basis For Monument Location:

(Show info such as history, evidence, testimony, found or method of relocation)

Gary L. Dechant 11-14-2012
Gary L. Dechant, S-1744

Found an unrecorded Cast Iron TCP Monument. It falls in the middle of a field. It was tipped as it was not buried deep enough to escape farming operations. Straightened and set deeper. Apparently there are unrecorded surveys in this area that were determined by the location of this NE corner of Section 6, according to nearby landowners. Even though the origin is uncertain, it was accepted as it fits other corners very well and to not disrupt those apparent unrecorded surveys.



Gary L. Dechant
WISCONSIN
GARY L. DECHANT
S-1744
CAMP DOUGLAS, WI
LAND SURVEYOR
November 14, 2012

SEE RECORD OF SURVEY
OCTOBER 18, 2012