

U.S. Land Survey Monument Record

Corner ID: E1/4 29, T16N-R2W

21602292000

Type of Monument:

Set Harrison Monument

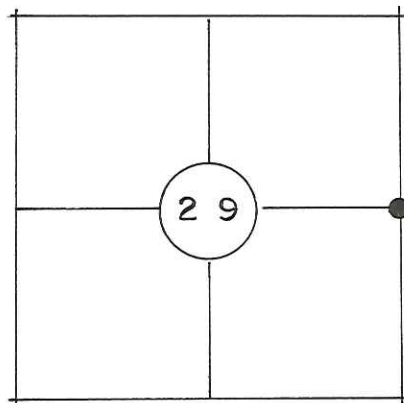
County Coordinates:

339658.5
673561.2

Witnesses: Zachariah P. Dechant
Gary L. Dechant

Basis For Monument Location:

(Show info such as history, evidence, testimony, found or method of relocation)



Gary Schneider submitted a tie sheet for this corner November 11, 1989 stating he set a Harrison at the corner by proportionate measurement.

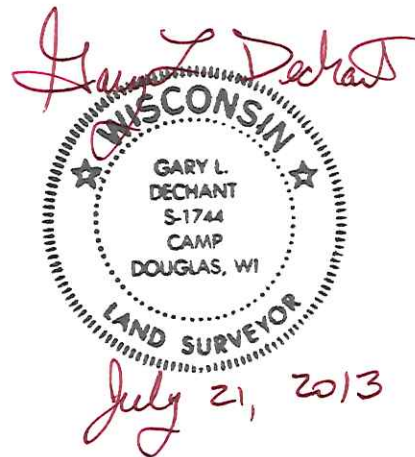
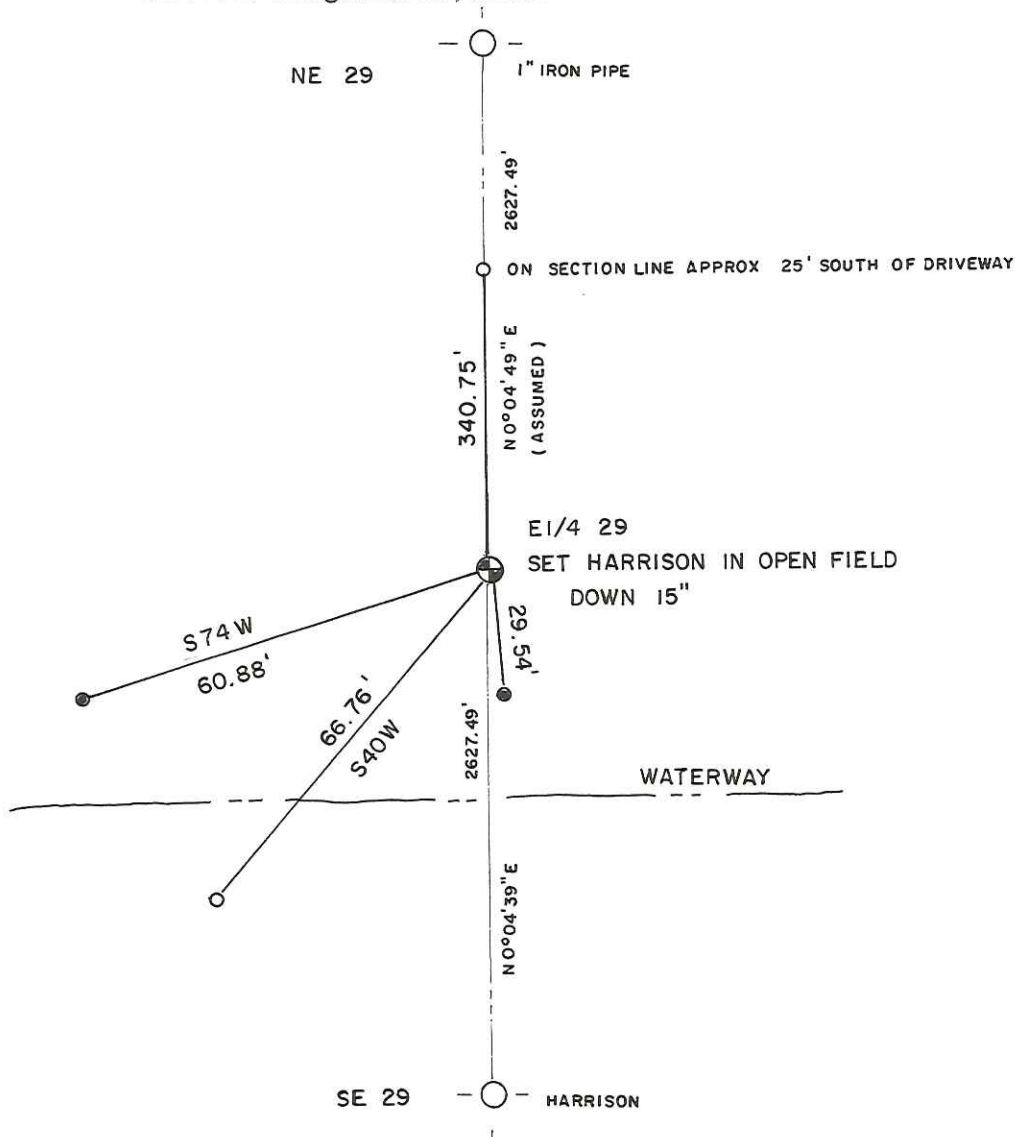
Schneider

County Surveyor, Gary Sime, sometime in the early 1990's, found that G. ~~Schroeder~~ had set the SE corner of Section 29 in error, apparently a calculation error in his attempt to set it by DPM, which directly affected his location for the E1/4 corner. G. Sime intended to move the corner but had not done so.

After adjusting the SE corner, (see tie sheet for SE corner of Section 29), we then reset the E1/4 corner in its new position on line and half way between section corners. This position fits the centerline of Lasso Ave and CTH "T" much better. Set in open field, down 15".

●=Existing 1/2" iron rod (Schneider's), we drove them down 6"

○=Set 3/4"x24" hexagon iron bar, down 8"



July 21, 2013

The location of this marker is under investigation. Please contact the Monroe County Surveyor at (608) 269-8623 or (608) 427-3624 with questions on this corner. (see page 1 for update)

21602292000

U.S. PUBLIC LAND SURVEY MONUMENT RECORD

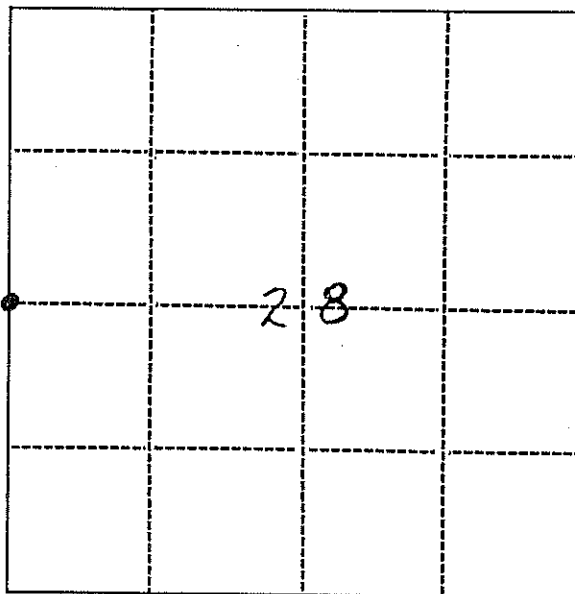
INSTRUCTIONS:

This record shall show the location of the corner and shall include all of the following nine elements (a through i).

- (a) Identify the corner by reference to the U.S. public land survey system.
O = Corner monument restored.

W 1/4 COR.

SEC 28-16-2W

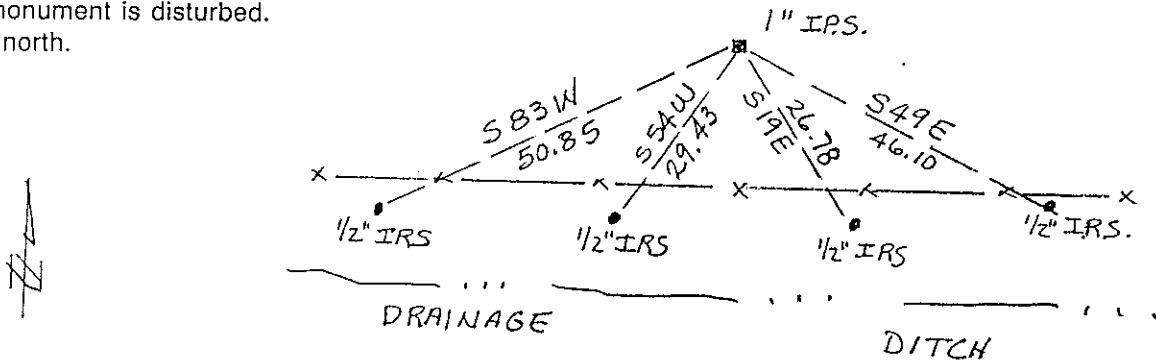


- (b) Describe any record evidence, monument evidence, occupational evidence, testimonial evidence or any other material evidence you considered, and whether the monument was found or placed.

ALL EVIDENCE WAS GONE. CORNER WAS LOST.

- (c) In the plan view drawing below, provide reference ties to at least 4 witness monuments, or if the location is within a municipality, to at least 2 witness monuments. (Witness monuments shall be made of concrete, natural stone, iron or other equally durable material.)
Describe witness monuments.

- (d) Show a plan view drawing depicting the relevant monuments and reference ties which is sufficient in detail to enable accurate relocation of the corner monument if the corner monument is disturbed. Indicate north.



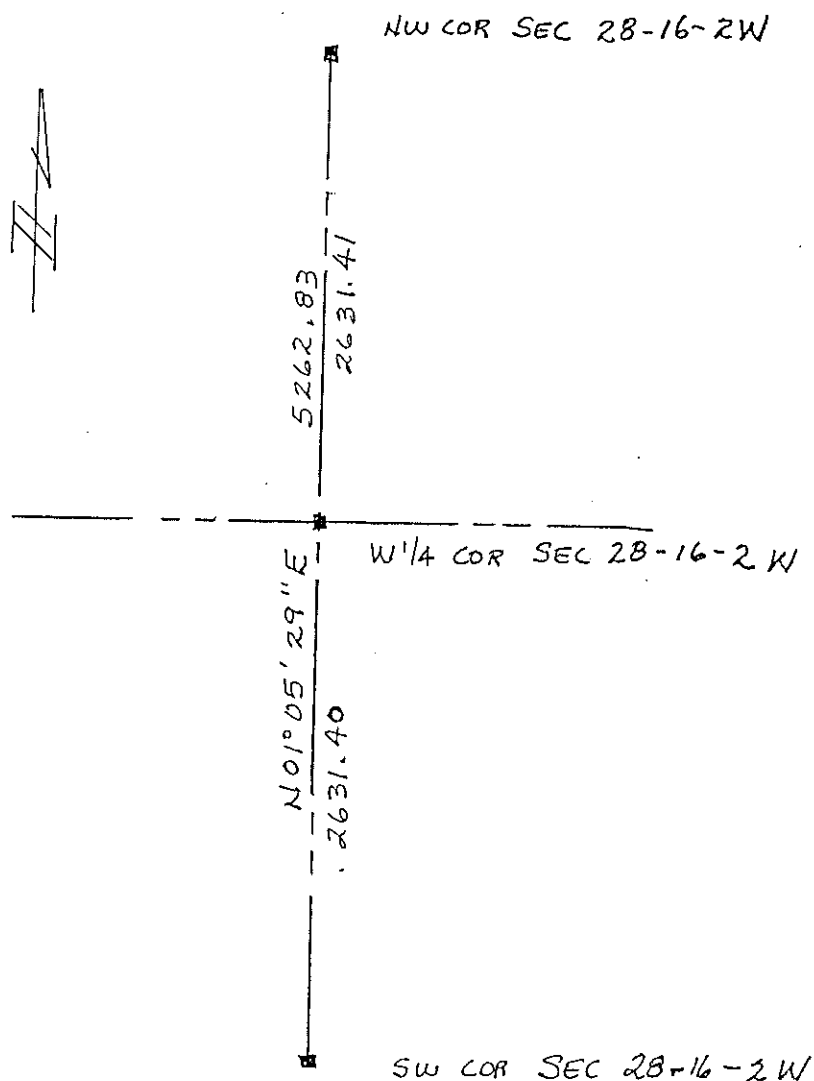
Describe any material discrepancy between the location of the corner as restored or reestablished and the location of the corner as previously restored or reestablished by distance and direction. Show the discrepancy on the plan view drawing under (d), above. Show the distances between the corner as previously restored or reestablished and (1) the corner as restored or reestablished, and (2) to at least 2 of the witness monuments shown on the drawing in (d), above.

NONE

(f) Was the corner restored through acceptance of (1) an obliterated evidence location, or, (2) a found perpetuated location?

NO

(g&h) Was the corner reestablished through lost corner proportionate methods? If so, show the method, including the directions and distances to other public land survey corners used as evidence or used for proportioning in determining the corner location?



(i) I, GARY D. SCHNEIDER S-1297
 (type or print name) certify that the corner location shown on this record was determined by me or under my direction and control and that this U.S. Public Land Survey Monument Record is correct and complete to the best of my knowledge and belief.

Gary D. Schneider
 Signature

11-2-89
 Date

Research Form
for
Original U.S. Public Land Survey Corner
Restoration or Reestablishment

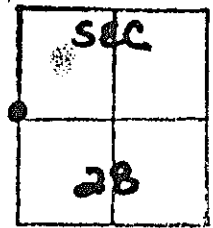
(E 1/4 COR 29)

DATE 5/20/89

1) Coener Designation

W1/4 corner of section 28 (Corner Index No)
Township 16 North; Range 2 , WEST ; county
MONROE.

Please circle appropriate corner
and indicate section number -



2) Description of Original Corner

Year set by whom

Physical description of monument SET 1/4 SECTION POST

Bearing tree descriptions BURR OAK 13 N 87 E 193 1KS (127.38)

BURR OAK 10 N5W 190 (125.40)

Calls within 1/2 mile (streams, outcrops, etc.)

BROOK BLKS - 16.08 CH NORTH OF 1/2 CORNER

3) Record of use and/or perpetuation by County Surveyors NONE

- 4) Description of Monument Evidence and Occupation Evidence in Existence NONE NO CHANCE FOR B.T. OPEN FIELD.
- 5) Field sketch of evidence (Show relationship between markings found, fences, roads, and other occupational features).
- 6) Results of Field Search (in the following blanks, answer yes, no, or not applicable.)
- A. Were marks of the original surveyor found? NO
- B. Were marks of subsequent surveyors found? NO
- C. Is there any conflict between any found marks? NO
- D. Is there any conflict between found marks and occupation lines? NO
- E. Was parol evidence solicited? YES Was parol evidence obtained? NO
- F. Is there any conflict between physical evidence and parol evidence? NO PHYSICAL EVIDENCE
- G. Is the location of the found evidence in general accord with other corners as determined from aerial photographs? N/A
- H. Is there a reasonable indication that digging with power tools and machinery could yield substantial evidence of the corner? NO Is this procedure recommended? NO

I. Does it appear necessary to obtain a proportional position for the corner to either shore up or refute existing physical evidence? YES

J. At this point in time, do you consider the corner lost such that it should be located entirely by proportionate measurement? YES

7) Recommendations

(Please indicate (1) the position you recommend as best representing the true corner or (2) further action you recommend before making a location determination). (1) SINGLE
PROPORTION

8) Further comments SEE BELOW.

9) Certification

Field Investigation Executed

Date: _____

By: GARY SCHNEIDER under direct supervision of: _____, L.S.

Registration No.: S-1297

NOTE: FIELD INVESTIGATION OF THE SW COR OF SEC 28 REVEALED NO CONCLUSIVE EVIDENCE. ALSO NO EVIDENCE FOUND AT EAST 1/4 COR SEC 32. DOUBLE PROPORTION WAS DONE BETWEEN SW COR SEC 29, S 1/4 COR SEC 28, NW COR SEC 29 AND THE SE COR OF SEC 32. FOR THE SW COR OF SEC 28, THEN SINGLE PROPORTION OF THE W 1/4 COR SEC. 28.