

#110

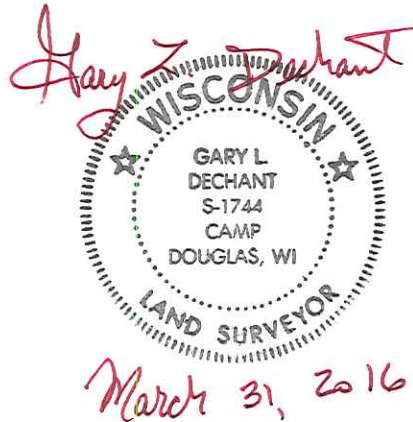
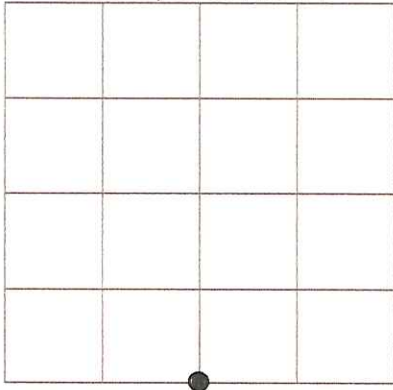
# U.S. Public Land Survey Monument Record

Corner ID: S1/4 Sec. 29, T16N-R2W

21602290020

Type of Monument: Set (moved) Harrison Monument

Sec. 29, T16N-R2W



**CERTIFICATE:**

I, Gary L. Dechant, S-1744, do hereby certify that the corner location was determined under my direction and control as per Chapter AE-7 of the Wisconsin Administrative Code to the best of my knowledge and belief.

County Coordinates:

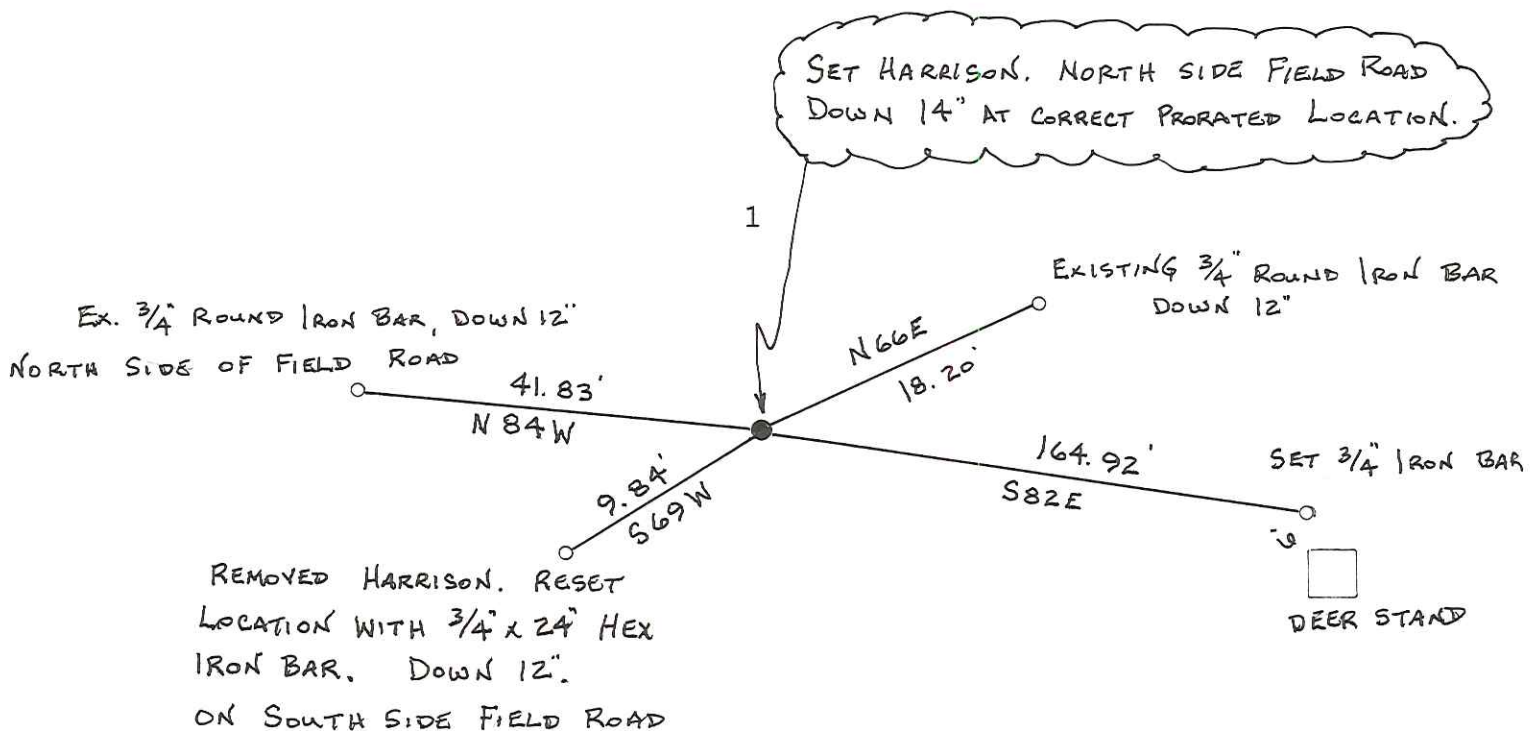
Witnesses: Zachariah P. Dechant  
Gary L. Dechant

October 3, 2015 *Gary L. Dechant* 3/31/2016

**Basis For Monument Location:**

(Show info such as history, evidence, testimony, found or method of relocation)

After finding no evidence, G. Sime set this corner Dec. 21, 1990 on line and equidistant between section corners. At a later date, Gerald Sme discovered that the SE corner that was set by G Schneider in 1989 was set in error and was moved. Since proration method was used, the SE corner affects the location of this S1/4 corner of Section 29, thus the Harrison set by Sime at the S1/4 corner of Section 29 was moved to its current location.



I, Garold A. Sime, do hereby certify that on the 8th day of November 1990, I found ~~(no evidence)~~ (no evidence) of the N 1/4 corner of Section 32, T16 N, R 2 W Fourth Principal Meridian, and I re-established said corner according to the Wisconsin Statutes as shown and described hereon.

Dated this 21st day of Dec. 1990.

Garold A. Sime  
 Monroe County Surveyor  
 Title

History of corner establishment since Original Government Survey

No history of corner location recorded since the Original Government Survey

Description of corner evidence found:

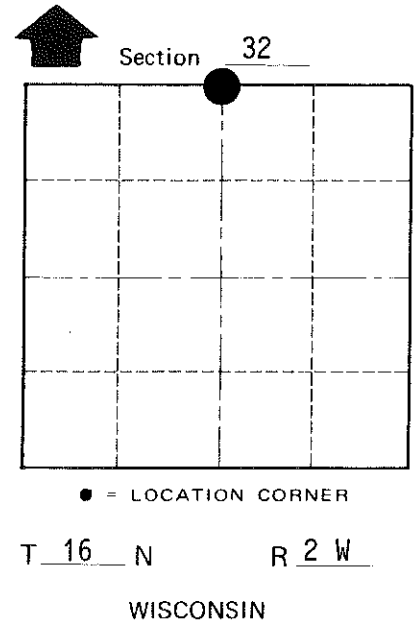
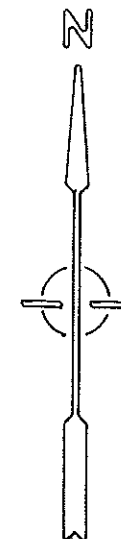
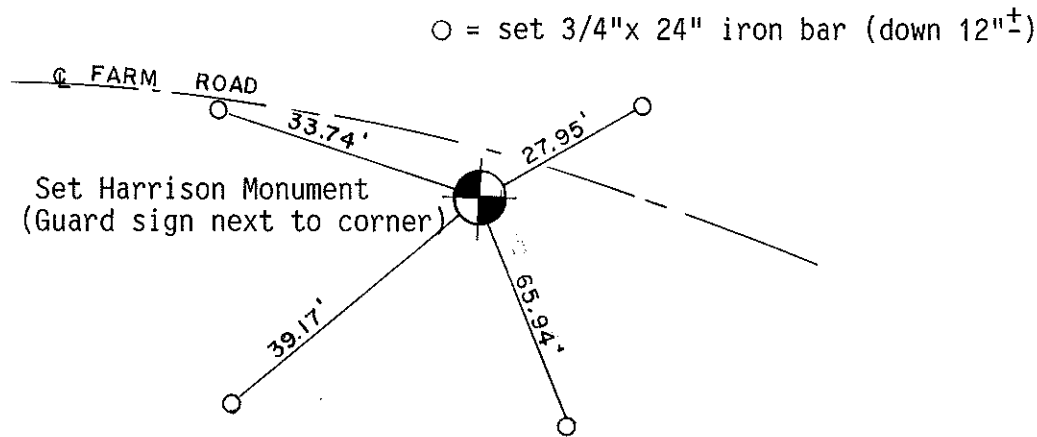
I established this corner on line and equidistant from the Northeast corner and Northwest corner of said Section 32.

Description of corner and witness monuments, references and accessories used to perpetuate the original or re-established location of this corner:

Set cast iron Harrison Monument (down 15") at corner  
 Set guard sign on east side of corner.

Witnesses to corner location:

Bryan H. Meyer, R.L.S.  
John F. Kenworthy



COUNTY SURVEYOR FORM NO. 1

SURVEY CONTROL ORDER

Horizontal	_____
Vertical	_____

WISCONSIN COORDINATE SYSTEM

Corner	East (X)	North (Y)	Elevation (Z)	Zone
Control Sta. Name				

City, Village or Town Ridgeville  
 County of Monroe