

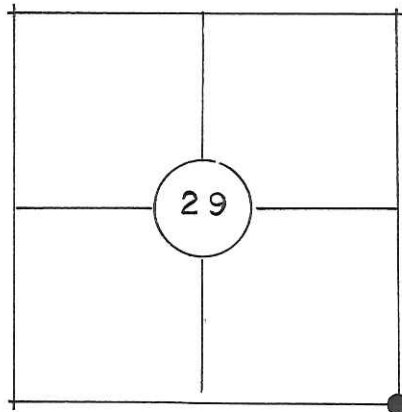
# U.S. Land Survey Monument Record

Corner ID: SE 29, T16N-R2W

21602290000

**Type of Monument:**

Set Harrison Monument



**County Coordinates:**

337031.0  
673540.6

**Witnesses:** Zachariah P. Dechant

**Basis For Monument Location:**

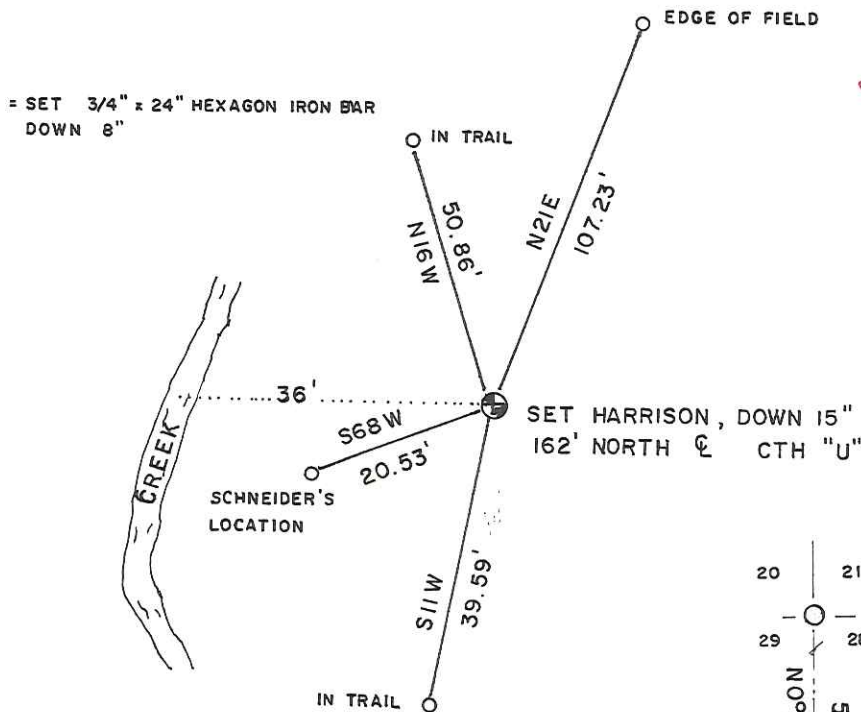
(Show info such as history, evidence, testimony, found or method of relocation)

Gary Schneider submitted a tie sheet for this corner November 11, 1989 stating he set a Harrison at the corner by double proportionate measurement.

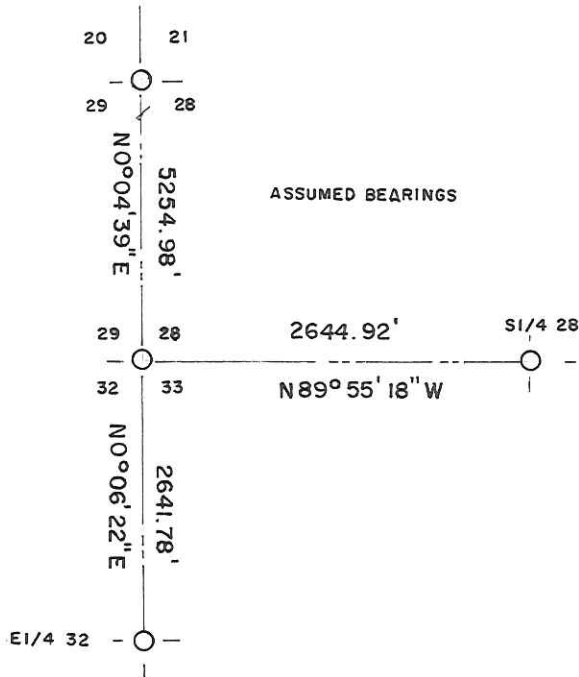
County Surveyor, Gary Sime, sometime in the early 1990's, found that G. ~~Schroeder~~ <sup>Schneider</sup> had set the corner in error, apparently a calculation error in his attempt to set it by DPM. G. Sime intended to move the corner but had not done so.

After investigating the corner, I chose not to set it by DPM as I found supporting occupied evidence to do otherwise. I set this corner on line and at a doubled distance from the S<sup>1</sup>/<sub>4</sub> corner of Section 28 through an existing fence corner at the SW corner of the SE<sup>1</sup>/<sub>4</sub>-SW<sup>1</sup>/<sub>4</sub> of Section 28. This location fits near perfect with the occupied fence corner at the NW corner of the SW<sup>1</sup>/<sub>4</sub>-SW<sup>1</sup>/<sub>4</sub> of Section 28. This location also fits very well with the older fence ( there is now a new fence built to the north) at the SW corner of the NW<sup>1</sup>/<sub>4</sub>-NW<sup>1</sup>/<sub>4</sub> of Section 33. This location also fits much better with the centerlines of roads CTH "T" and Lasso Ave along the West line of the NW<sup>1</sup>/<sub>4</sub> of Section 28. It also reasonably fits distance to NW corner Section 32.

Prorating is an absolute last resort method, to be used only if there is a complete lack of any evidence. The surrounding evidence, long time occupied evidence, all which closely matches original government distances, supports this location.



*Gary L. Dechant*  
WISCONSIN  
GARY L. DECHANT  
S-1744  
CAMP  
DOUGLAS, WI  
LAND SURVEYOR  
*July 31, 2013*



The location of this marker is under investigation. Please contact the Monroe County Surveyor at (608) 269-8623 or (608) 427-3624 with question on this corner. (see update on page 1)

21602290000

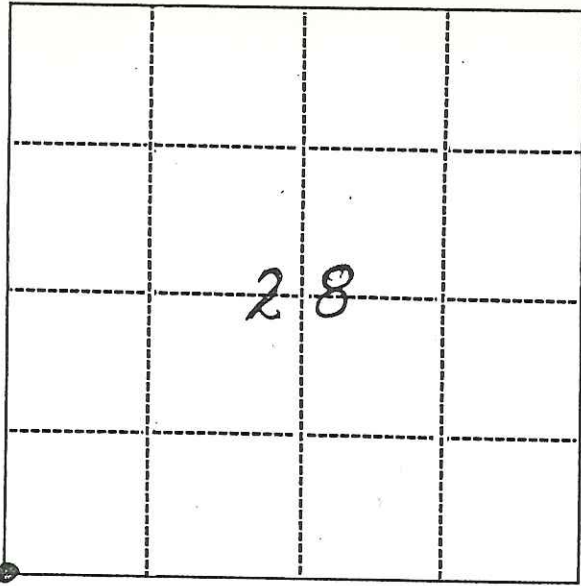
# U.S. PUBLIC LAND SURVEY MONUMENT RECORD

## INSTRUCTIONS:

This record shall show the location of the corner and shall include all of the following nine elements (a through i).

- (a) Identify the corner by reference to the U.S. public land survey system.  
O = Corner monument restored.

SW COR  
SEC 28-16-2 W

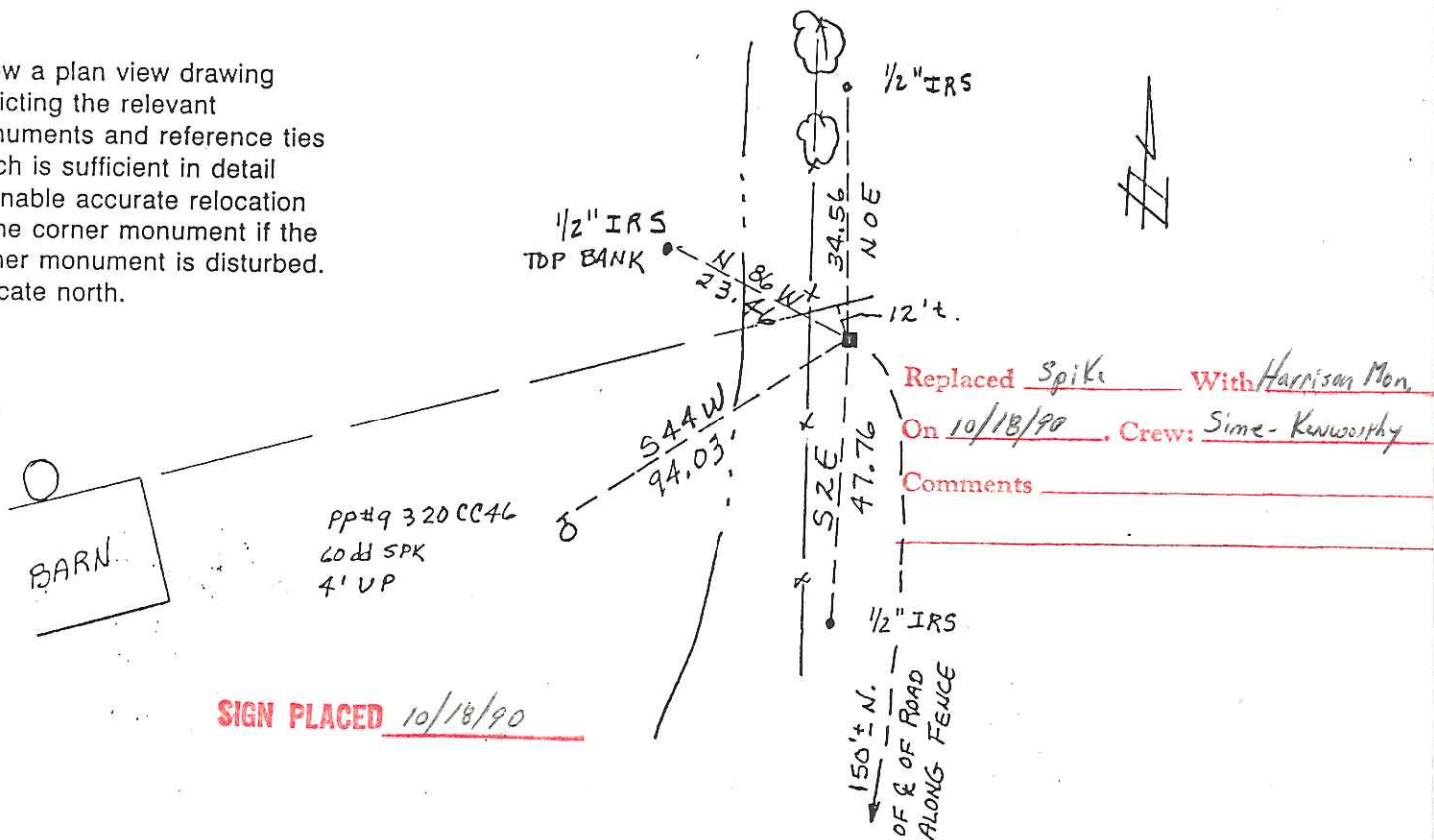


- (b) Describe any record evidence, monument evidence, occupational evidence, testimonial evidence or any other material evidence you considered, and whether the monument was found or placed.

NO EVIDENCE FOUND - CORNER CONSIDERED LOST. SET BY DOUBLE PROPORTIONATE MEASUREMENT

- (c) In the plan view drawing below, provide reference ties to at least 4 witness monuments, or if the location is within a municipality, to at least 2 witness monuments. (Witness monuments shall be made of concrete, natural stone, iron or other equally durable material.) Describe witness monuments.

- (d) Show a plan view drawing depicting the relevant monuments and reference ties which is sufficient in detail to enable accurate relocation of the corner monument if the corner monument is disturbed. Indicate north.



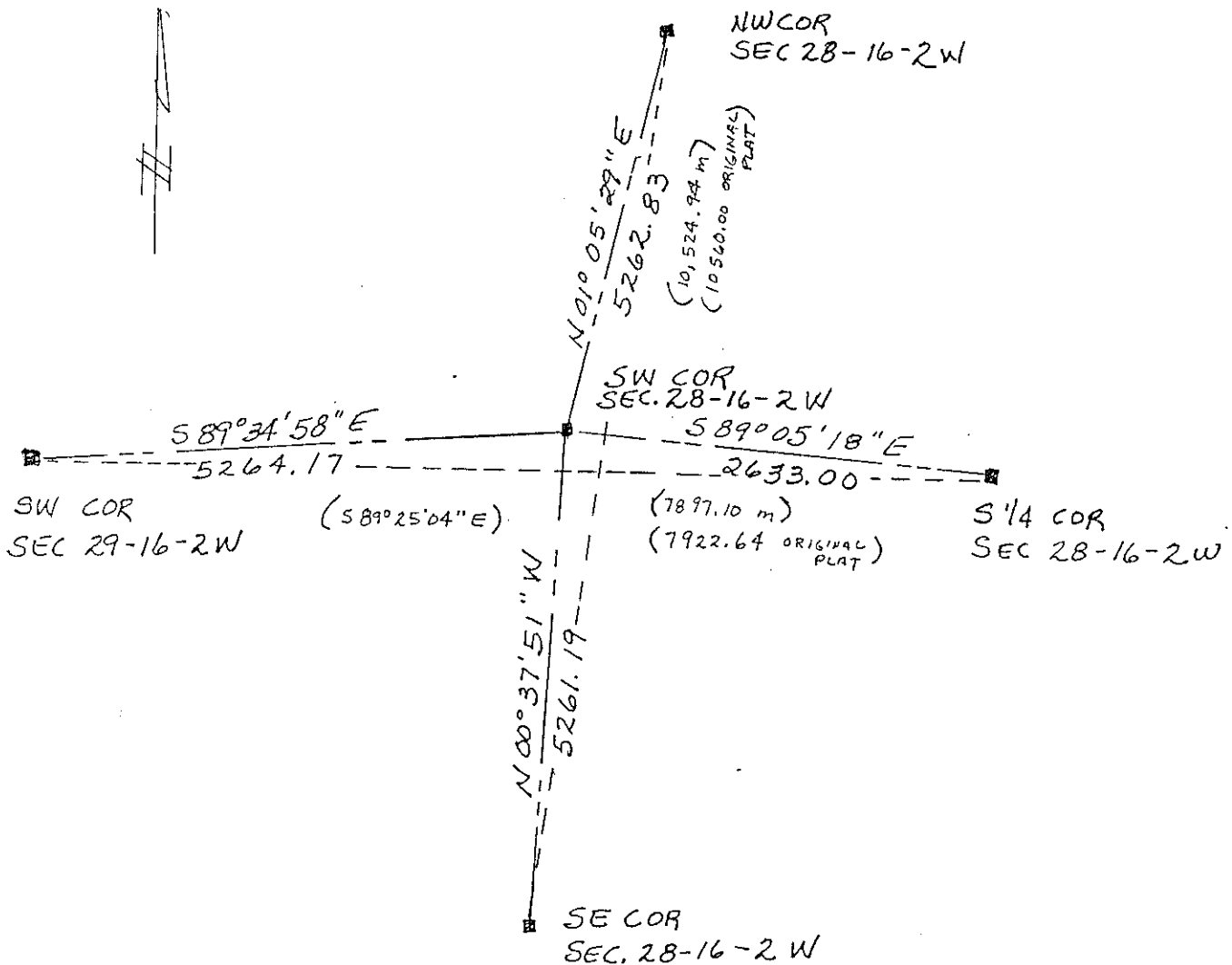
(e) Describe any material discrepancy between the location of the corner as restored or reestablished and the location of that corner as previously restored or reestablished by distance and direction. Show the discrepancy on the plan view drawing under (d), above. Show the distances between the corner as previously restored or reestablished and (1) the corner as restored or reestablished, and (2) to at least 2 of the witness monuments shown on the drawing in (d), above.

NO

(f) Was the corner restored through acceptance of (1) an obliterated evidence location, or, (2) a found perpetuated location?

NO

(g&h) Was the corner reestablished through lost corner proportionate methods? If so, show the method, including the directions and distances to other public land survey corners used as evidence or used for proportioning in determining the corner location?



(i) I, GARY D. SCHNEIDER S-1297 (type or print name) certify that the corner location shown on this record was determined by me or under my direction and control and that this U.S. Public Land Survey Monument Record is correct and complete to the best of my knowledge and belief.



Gary D. Schneider  
Signature

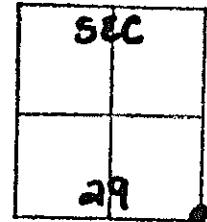
11-2-89  
Date

Research Form  
for  
Original U.S. Public Land Survey Corner  
Restoration or Reestablishment

DATE 9/12/89

- 1) Corner Designation  
SE corner of section 29 (Corner Index No. \_\_\_\_\_)  
Township 16 North; Range 2 WEST; county  
MONROE.

Please circle appropriate corner  
and indicate section number -



- 2) Description of Original Corner  
Year set \_\_\_\_\_ by whom \_\_\_\_\_  
Physical description of monument: POST  
Bearing tree descriptions BUR OAK 26 S 51W 31 LKS  
BUR OAK 8 S 55 E 69 LKS  
Calls within 1/2 mile (streams, outcrops, etc.) 73.06 TRAIL  
BEARS NE
- 3) Record of use and/or perpetuation by County Surveyors \_\_\_\_\_  
\_\_\_\_\_  
\_\_\_\_\_  
\_\_\_\_\_  
\_\_\_\_\_

4) Description of Monument Evidence and Occupation Evidence in

Existence: NONE

---

---

---

---

5) Field sketch of evidence (Show relationship between markings found, fences, roads, and other occupational features).

6) Results of Field Search (in the following blanks, answer yes, no, or not applicable.)

A. Were marks of the original surveyor found? NO

B. Were marks of subsequent surveyors found? NO

C. Is there any conflict between any found marks? NO

D. Is there any conflict between found marks and occupation lines? FENCE LINES E-W DO NOT EXIST.

(TALK WITH P/OWNER)  
E. Was parol evidence solicited? YES Was parol evidence obtained? NO

F. Is there any conflict between physical evidence and parol evidence? NO

G. Is the location of the found evidence in general accord with other corners as determined from aerial photographs?

N/A

H. Is there a reasonable indication that digging with power tools and machinery could yield substantial evidence of the corner? NO Is this procedure recommended? NO

I. Does it appear necessary to obtain a proportional position for the corner to either shore up or refute existing physical evidence? YES

J. At this point in time, do you consider the corner lost such that it should be located entirely by proportionate measurement? YES

7) Recommendations

(Please indicate (1) the position you recommend as best representing the true corner or (2) further action you recommend before making a location determination). (1) PROPORTION FROM SE COR SEC 32, TO NE COR SEC 29 AND SW COR SEC 29 TO S 1/4 SEC 28.

8) Further comments

9) Certification

Field Investigation Executed

Date: JUNE 89'

By: GARY D. SCHNEIDER S-1297 under direct supervision of: \_\_\_\_\_, L.S.

Registration No.: \_\_\_\_\_