

CERTIFICATE

CERTIFIED LAND CORNER

No. 97

21602282000

I, Gary L. Dechant, do hereby certify that on the 12th day of Oct. 1991, I found (evidence) of the corner of Sec. 28, T 16 N, R 2 W Fourth Principal Meridian, and I re-established said corner according to the Wisconsin Statutes as shown and described hereon.

History of corner establishment since Original Government Survey

Fred Holden was here in the early 1900's.

Description of corner evidence found:

Intersected east-west existing fence with the East line of the SE 1/4-SE 1/4 of Section 28. The distance from this established corner to the SE corner of the NE 1/4-SE 1/4 measures 1305 feet. Fred Holden shows this distance to be 1309.11 feet.

I reestablished the SE corner of said NE 1/4-SE 1/4 from the rotted remains of the stumps or tap roots of Holden's bearing trees. I first noticed depressions in the ground where the tree rotted away, then dug and found remains of stumps. This forty corner falls at the occupied fence corner. This forty corner also fits evidence in the Village of Norwalk extremely well. However, there is a great shortage between the SE corner of NE 1/4-SE 1/4 to the SE corner of the section, 1264'+, perhaps a dropping of one chain by Holden.

Dated this 12th day of Oct. 1991.

Gary L. Dechant

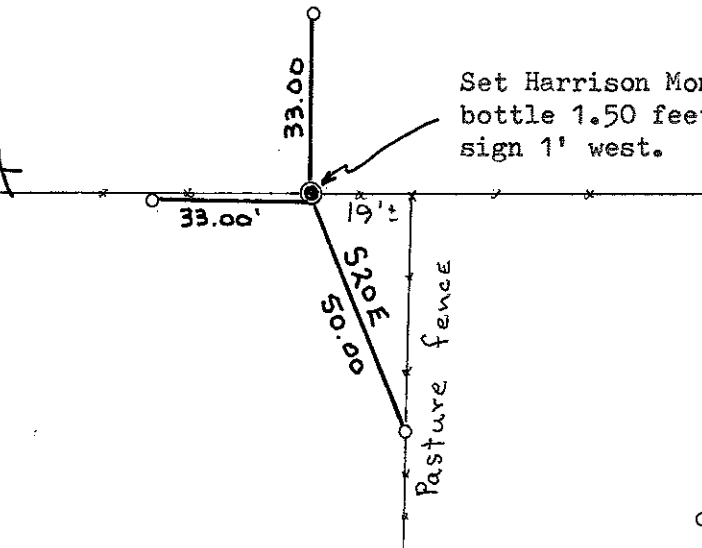
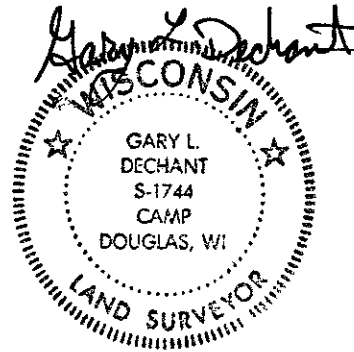
Reg. Land Surveyor - S-1744

COUNTY SURVEYOR FORM NO. 1

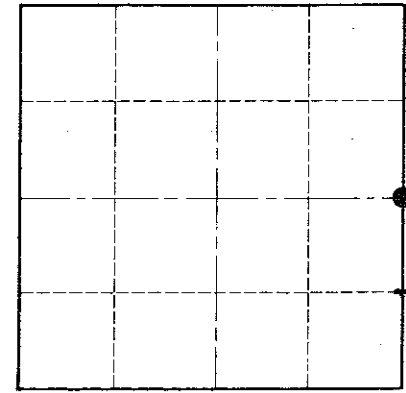
Description of corner and witness monuments, references and accessories used to perpetuate the original or re-established location of this corner:

Witnesses to corner location:

Gary L. Dechant



Section 28



• = LOCATION CORNER

T 16 N R 2 W

WISCONSIN

o = Set 1"x30" iron pipe

SURVEY CONTROL ORDER

Horizontal _____
Vertical _____

WISCONSIN COORDINATE SYSTEM

Corner	East (X)	North (Y)	Elevation (Z)	Zone
Control Sta. Name				

City ~~Village~~ or Town RIDGEVILLE

County of MONROE