

108

**U.S. PUBLIC LAND CORNER
MAINTENANCE**

**Corner ID : S1/4 Sec. 28, T16N-R2W
21602280020**

<u>DATE</u>	<u>CREW</u>	<u>MONUMENT TYPE</u> -----
October 3, 2015	Zachariah P. Dechant Gary L. Dechant	Existing 1/4" iron bar. Will be destroyed due to Road work. Will reset with RR spike. 20 north & 3' west of road center line intersection of CTH U" and Main St.

References:

	<u>Bearing</u>	<u>Distance</u>
1) Set 3/4"x24" round iron bar, down 6", 1' east of SE corner St. Augustine Catholic Church	N66W	69.96'
2) Set 3/4"x24" round iron bar, down 6", 16' south of SW corner of house	N60E	69.94'
3) Set 3/4"x24" round iron bar, down 6", 6' south of 30" Locust, 21' west & 7' south of NW corner house at 601 Main St.	S66E	45.11"
4) Set 3/4"x24" round iron bar, 6' NE of 14" Spruce	S30W	70.90'

Harrison & reference markers 1 & 3 set on straight lines.



I, William C. Jung, do hereby certify that on the 17th day of July 1981, I found (evidence) (~~was evidence~~) of the N¹/₄ corner of Section 33, T16 N, R 2 W Fourth Principal Meridian, and I re-established said corner according to the Wisconsin Statutes as shown and described hereon.

History of corner establishment since Original Government Survey
 Schroeder (Kenyon?) was at this corner in April of 1883. Holden found the original corner in June of 1904. The 1/4 corner shows as being at the road intersection in the following plats: Vol.3, Page 16; Vol.4, Page 32; Vol.5, Page 49. Fred Zietlow set an iron bar at this corner in the road intersection while doing a survey in November of 1970. This iron bar was used as the corner by Marten when he did a survey in May of 1973. In April of 1975, Description of corner evidence found: H.A. Sime used this iron bar as the corner in his Plat of Norwalk Hills.

Dated this 14th day of August 1981.
William C. Jung, R.L.S. 1323

I found the iron bar used in previous surveys, removed it, and replaced the bar with a Harrison marker.

Approved: **HARLEY A. SIME**
MONROE CO. SURVEYOR

See Reverse Side For Maintenance

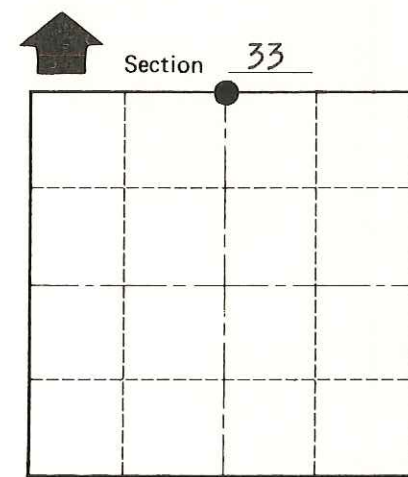
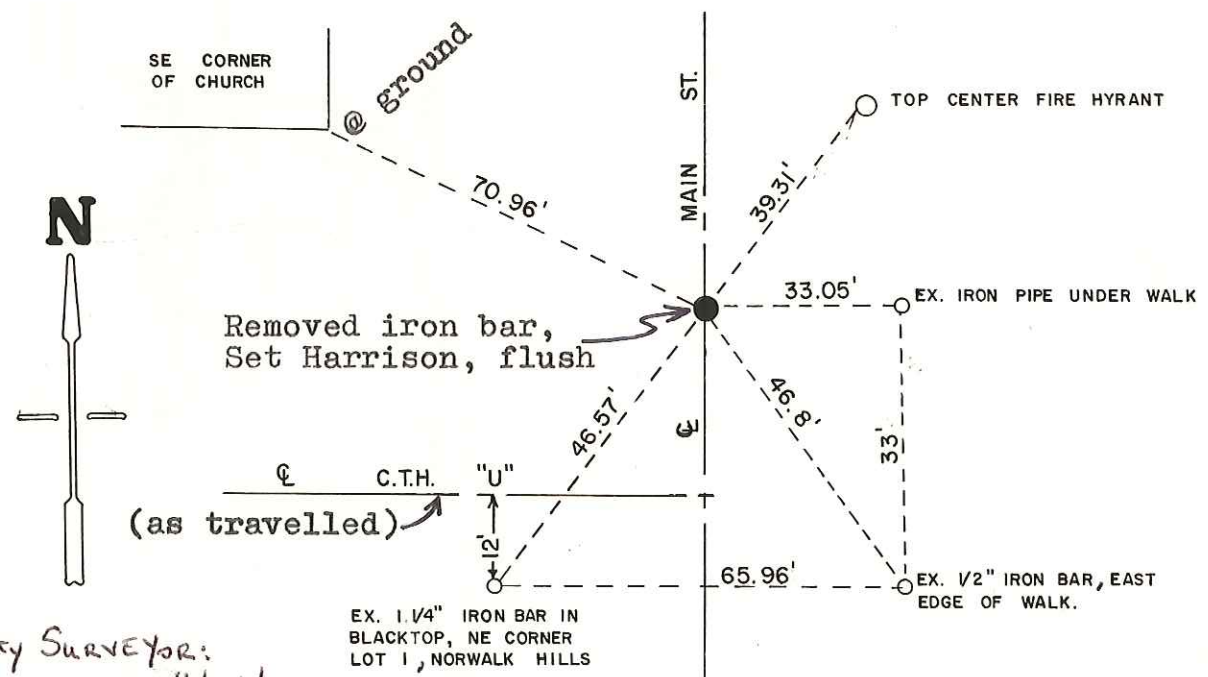
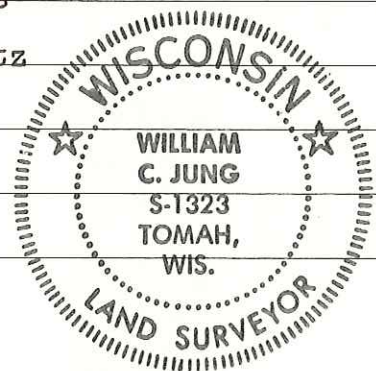
County Surveyor's Office
 Title

William C. Jung

Description of corner and witness monuments, references and accessories used to perpetuate the original or re-established location of this corner:

Witnesses to corner location:

W. Jung
C. Pietz



SURVEY CONTROL ORDER

Horizontal	_____
Vertical	_____

County Surveyor:
Hay L. Dichter 11/26/2013
 WISCONSIN COORDINATE SYSTEM

Corner	East (X)	North (Y)	Elevation (Z)	Zone
Control Sta. Name	676185.4	337010.4		

~~Village~~ Norwalk
 County of Monroe

COUNTY SURVEYOR FORM NO. 1