

105

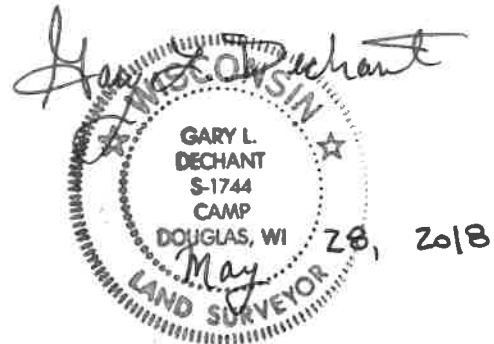
**U.S. PUBLIC LAND CORNER
MAINTENANCE**

**Corner ID : NE Sec.34, T16N-R2W
21602270000**

<u>DATE</u>	<u>CREW</u>	<u>MONUMENT TYPE</u>
April 27, 2018	Zachariah P.Dechant Gary L. Dechant	Existing Harrison intact at fence corner. North of large flat stone. Set sign 1.5' west.

References:

	<u>Bearing</u>	<u>Distance</u>
1) Set 3/4"x24" round iron bar, down 6", 5' SW of 3" Cherry	N43E	39.18'
2) Set 3/4"x24" round iron bar, down 6", 9' NW of 26" White Oak (1990 BT)	S30E	23.96'
3) Set 3/4"x24" round iron bar, north side of 1'x2.5' flat stone	South	10.65'
4) Set 3/4"x24" round iron bar, down 6", 5" SE of 26" White Oak (1990 BT)	N20W	16.54'



CERTIFICATE

CERTIFIED LAND CORNER

2160227000

No. 105

I, Garold A. Sime, do hereby certify that on the 18th day of May 1990, I found (evidence) ~~(no evidence)~~ of the NE corner of Section 34, T 16 N, R 2 W Fourth Principal Meridian, and I re-established said corner according to the Wisconsin Statutes as shown and described hereon.

Dated this 20th day of Dec. 1990.

Garold A. Sime
Monroe County Surveyor
Title

History of corner establishment since Original Government Survey

Fred Holden was at this corner in May of 1907.

Description of corner evidence found:

Accepted the existing fence corner as the best available evidence of the corner location.

See Reverse Side For Maintenance

Description of corner and witness monuments, references and accessories used to perpetuate the original or re-established location of this corner:

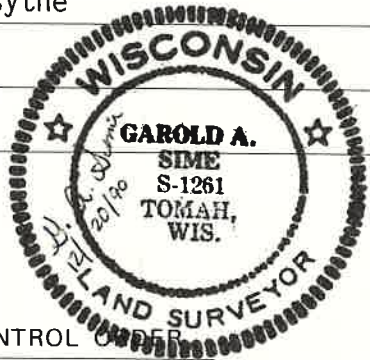
Set Cast Iron Harrison Monument at corner.
Set Guard Sign next to Harrison.

Witnesses to corner location:

Garold A. Sime, R.L.S.

John Kenworthy

Brian Forsythe



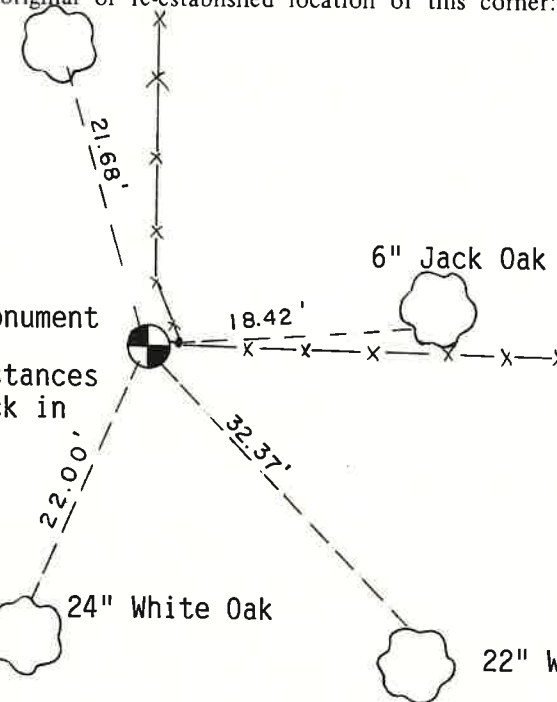
SURVEY CONTROL

Horizontal _____
Vertical _____

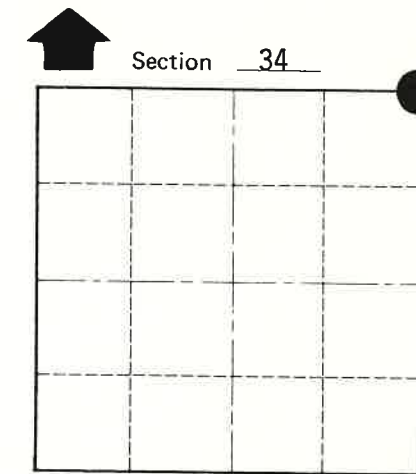
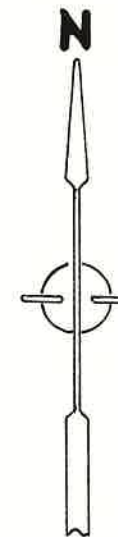
WISCONSIN COORDINATE SYSTEM

Corner	East (X)	North (Y)	Elevation (Z)	Zone
Control Sta. Name				

22" White Oak



Trees are double blazed and distances shown are to nails set in a hack in the side of tree



O = LOCATION CORNER

T 16 N R 2W

WISCONSIN

City, Village or Town of Ridgeville

County of Monroe

COUNTY SURVEYOR FORM NO. 1