

21602260020

I, Lawrence A. Feddersen, do hereby certify that on the 3rd day of June 19 80, I found ~~XXXXXX~~ (no evidence) of the South 1/4 corner of Section 26, T 16 N, R 2 W Fourth Principal Meridian, and I re-established said corner according to the Wisconsin Statutes as shown and described hereon.

Dated this 5th day of June 19 80.

Lawrence A. Feddersen

Registered Land Surveyor

History of corner establishment since Original Government Survey

There is no subsequent history of monument perpetuation since the Original U. S. Government Survey in Monroe County.

Description of corner evidence found:

A Harrison monument was set at the intersection of old fence lines to the North and West.

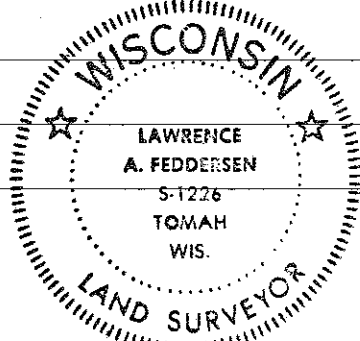
COUNTY SURVEYOR FORM NO. 1

Description of corner and witness monuments, references and accessories used to perpetuate the original or re-established location of this corner:

Witnesses to corner location:

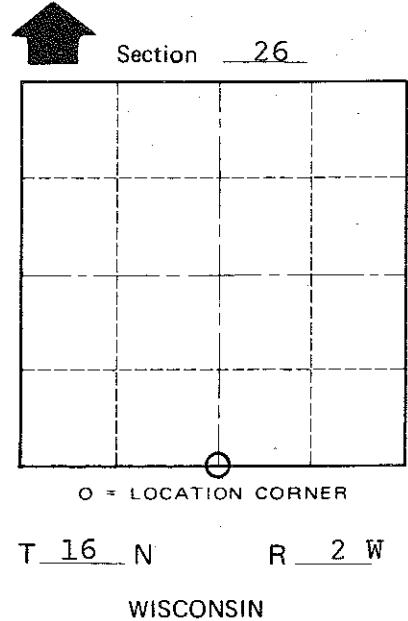
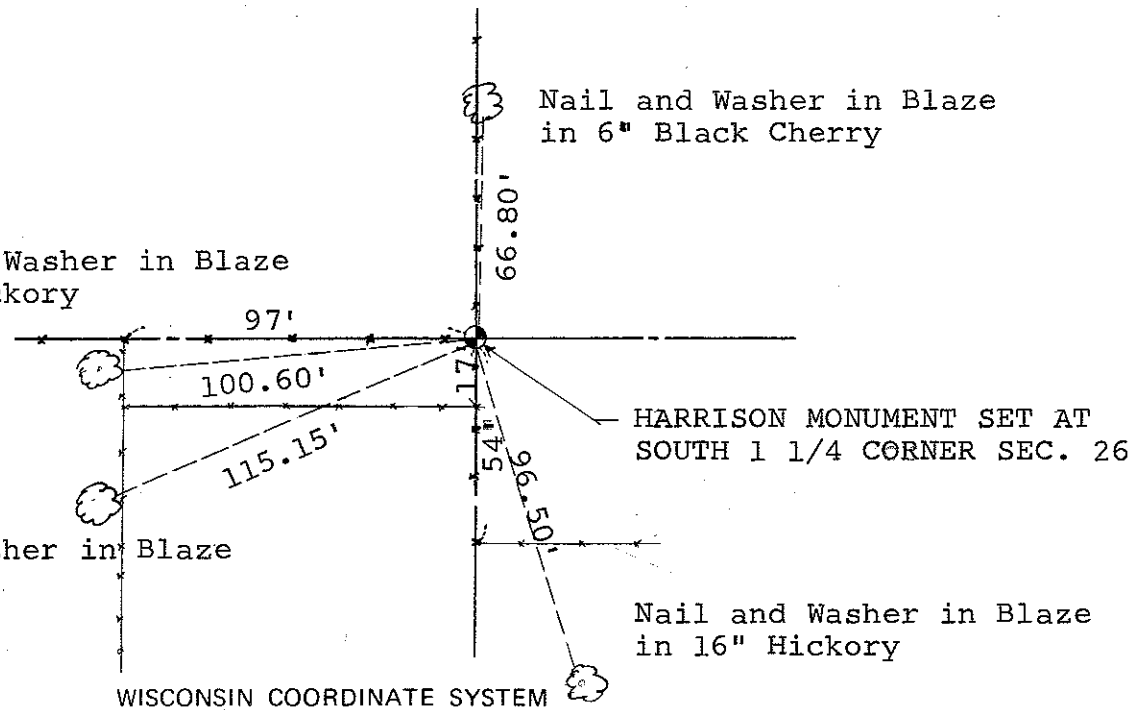
Lawrence A. Feddersen

Mark Heidecke



Nail and Washer in Blaze in 3" Hickory

Nail and Washer in Blaze in 11" Ash



Horizontal	_____
Vertical	_____

Corner	East (X)	North (Y)	Elevation (Z)	Zone
Control Sta. Name				

XXXXXX Town of Ridgville

County of Monroe