

118

**U.S. PUBLIC LAND CORNER
MAINTENANCE**

**Corner ID : E1/4 Sec.34, T16N-R2W
21602342000**

<u>DATE</u>	<u>CREW</u>	<u>MONUMENT TYPE</u> -----
April 27, 2018	Zachariah P.Dechant Gary L. Dechant	Existing Harrison intact, down 8" at projected fence corner intersection as shown on 1990 tie sheet.

References:

	<u>Bearing</u>	<u>Distance</u>
1) Set 3/4"x24" round iron bar, down 6", at toe of slope	N33E	35.82'
2) Existing 3/4" round iron bar 1' north of steel post (1990 tie)	East	51.17'
3) Set 3/4"x24" round iron bar, down 6" at toe of slope on south edge of trail	S65W	32.65'
4) Set 3/4"x24" round iron bar, down 6", half way between 20" Red Pine and 18" Black Cherry. Trees are 26' apart S70E.	N23W	55.45'



I, Garold A. Sime, do hereby certify that on the 18th day of May 1990, I found (evidence) ~~(no evidence)~~ of the E 1/4 corner of Section 34, T 16 N, R 2 W Fourth Principal Meridian, and I re-established said corner according to the Wisconsin Statutes as shown and described hereon.

Dated this 20th day of Dec. 1990.

Garold A. Sime

Monroe County Surveyor
Title

History of corner establishment since Original Government Survey

No history of this corner since the Original Government Survey

Description of corner evidence found:

Accepted the intersection of the fence lines as the best available evidence of the corner location.

See Reverse Side For Maintenance

Description of corner and witness monuments, references and accessories used to perpetuate the original or re-established location of this corner:

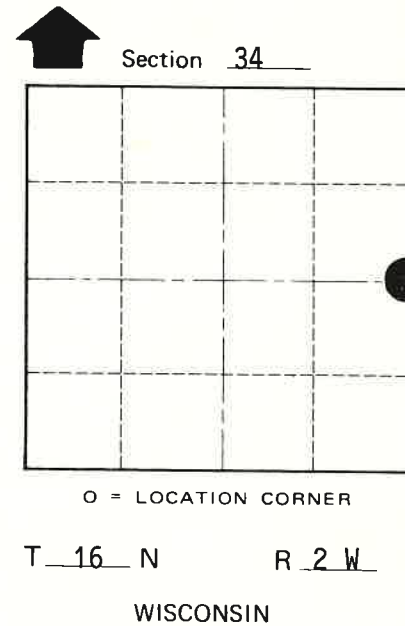
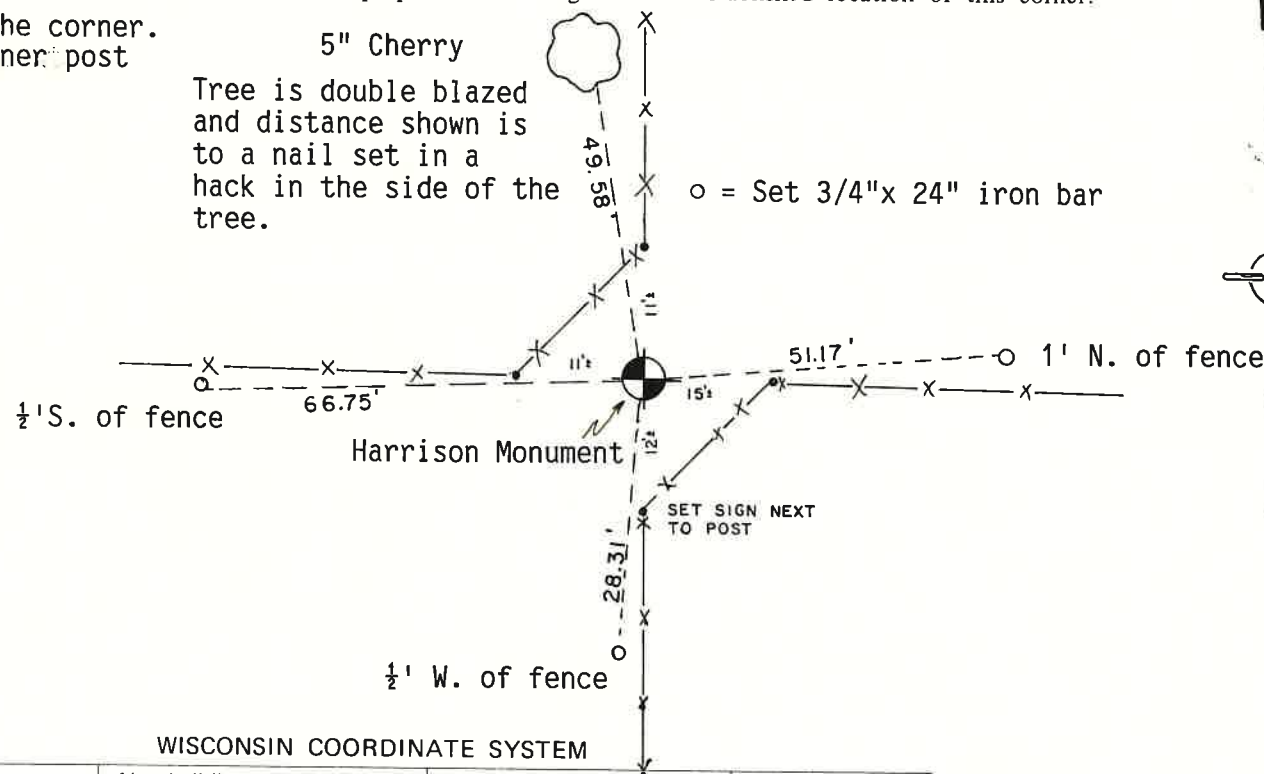
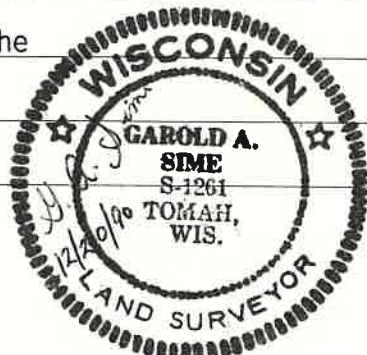
Set Cast Iron Harrison Monument at the corner.
Sec Guard Sign next to southerly corner post

Witnesses to corner location:

Garold A. Sime, R.L.S.

John Kenworthy

Brian Forsythe



SURVEY CONTROL ORDER

Horizontal	_____
Vertical	_____

WISCONSIN COORDINATE SYSTEM

Corner	East (X)	North (Y)	Elevation (Z)	Zone
Control Sta. Name				

City, Village or Town of Ridgeville

County of Monroe

COUNTY SURVEYOR FORM NO. 1