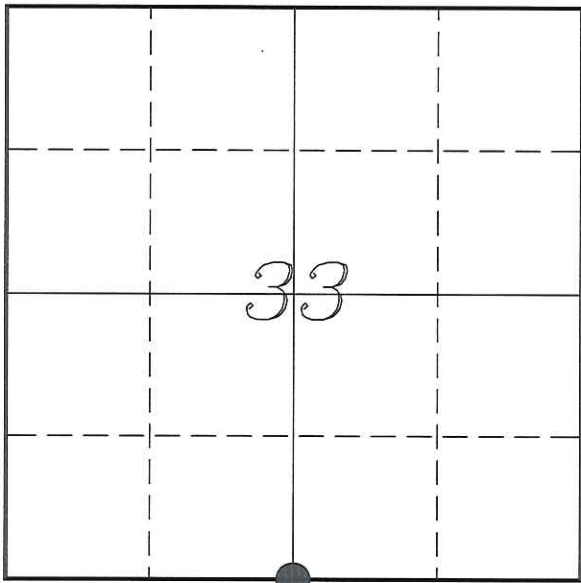


U. S. PUBLIC LAND SURVEY MONUMENT RECORD

SECTION 33, T16N, R2W, TOWN OF RIDGEVILLE
MONROE COUNTY, WISCONSIN



LOCATION OF LANDMARK

Witnesses: Laurence E Johns III

Date: 10 January 2014

MONROE COUNTY COORDINATE SYSTEM	
Northing	331769.683
Easting	676137.647
Datum	NAD 1983 (1991)
Elevation	
Datum	
TYPE OF LANDMARK:	
Existing Harrison Monument	
BEARINGS ARE REFERENCED TO:	
Monroe County Coordinates	

Describe any record evidence, monument evidence, testimonial evidence or any other material evidence you considered and whether the monument was found or restored through acceptance of an obliterated evidence location.

No bearing trees of record were located. Though blazed trees were noted in the area, possibly from when Maxwell set this monument.

I found the Harrison Monument set by Maxwell. The monument is on top of the East bank of a 8' deep wash. Maxwell shows that he set this monument at the mid-point between the SW & SE Corners.

There are no North/South fences evident in the area of this corner. The East/West fence has not been well maintained and is somewhat erratic in this area.

Schell's sketch of his survey is hard to decipher but it appears that he may have set this corner North of the fence as well.

I can find no definitive reason to disagree with the location of the Harrison Monument and I accepted it as the best available evidence of the original government corner.

Describe or show any material discrepancy between the location of the restored corner and that of the corner previously restored or re-established.

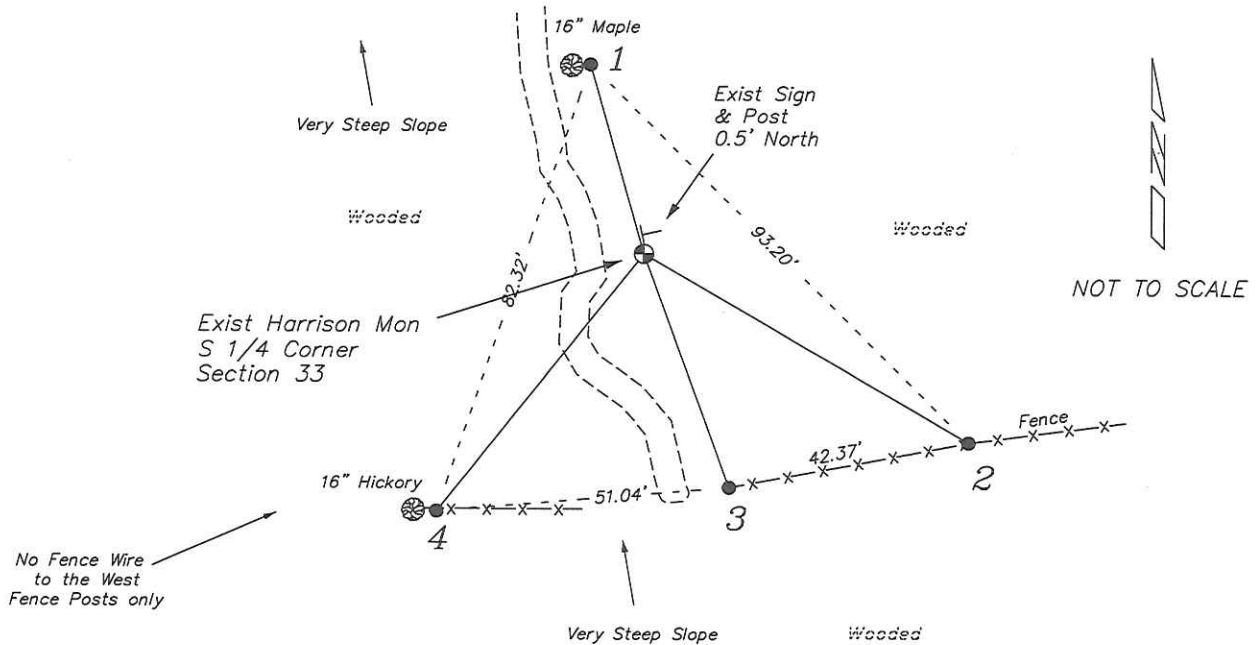
Uriah Biggs established this corner in October 1845.

Christ Schell was at this corner, in September 1936, during a survey in Section 33. He shows a iron pipe 78.3' North of Corner.

Rodney Maxwell was at this corner, in November 1997, during a survey in Section 33. He shows that he set a Harrison Monument at this corner.

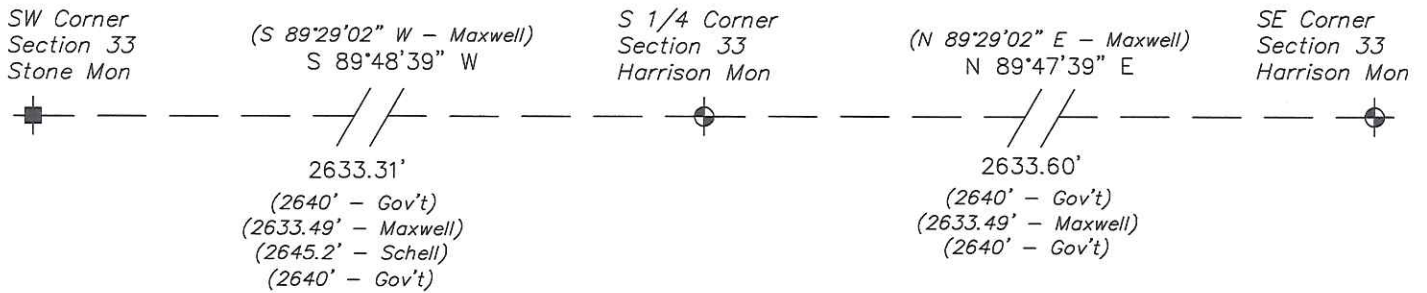
RECORD OF DURABLE WITNESS MONUMENTS

NO	DESCRIPTION	BEARING	DISTANCE
1	Set 3/4" x 18" Iron Rod 1' East of a 16" Maple	N 15°53'34" W	34.31'
2	Set 3/4" x 18" Iron Rod In Fence Line	S 59°51'57" E	65.41'
3	Set 3/4" x 18" Iron Rod In Fence Line	S 20°08'55" E	43.39'
4	Set 3/4" x 18" Iron Rod In Fence - 2' East of a 16" Hickory	S 38°38'47" W	57.52'



PLAN VIEW DRAWING OF REFERENCE TIES

Map Showing Distance And Direction To Other Public Land Survey
Corners Used For Re-Establishing The Corner



I, Laurence E Johns III RLS 2804, Registered Land Surveyor, hereby certify that the corner location shown on this record was determined by me or under my direction and control, and that this U.S. Public Land Survey Monument Record is correct and complete to the best of my knowledge and belief.



Laurence E. Johns III
 Laurence E Johns III RLS 2804
 Eagle Ridge Surveying, LLC
 PO Box 213
 Wilton, Wisconsin
 11 January 2014