

21602320020

I, Garold A. Sime, do hereby certify that on the 16th day of December 19 91, I found (evidence) ~~(no evidence)~~ of the North 1/4 corner of Section 5, T 15 N, R 2 W Fourth Principal Meridian, and I re-established said corner according to the Wisconsin Statutes as shown and described hereon.

History of corner establishment since Original Government Survey

Fred Holden set a stone at this corner in June of 1904.

Description of corner evidence found:

Found Holden's stone down 2", also Holden's bearing tree stump to the Southeast. I accepted Holden's stone for the corner location and referenced the stone as shown below.

Dated this 20th day of Dec. 19 91.

Garold A. Sime

Monroe County Surveyor  
Title

COUNTY SURVEYOR FORM NO. 1

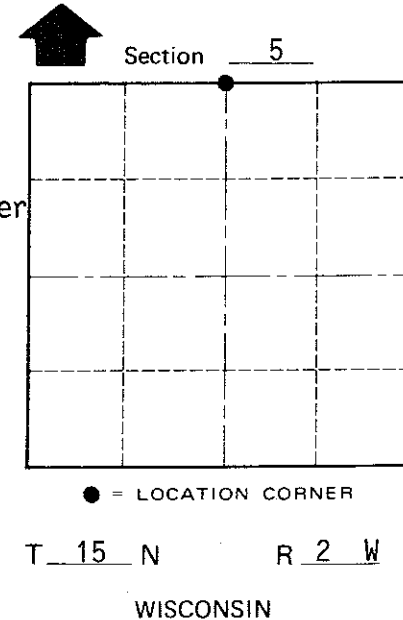
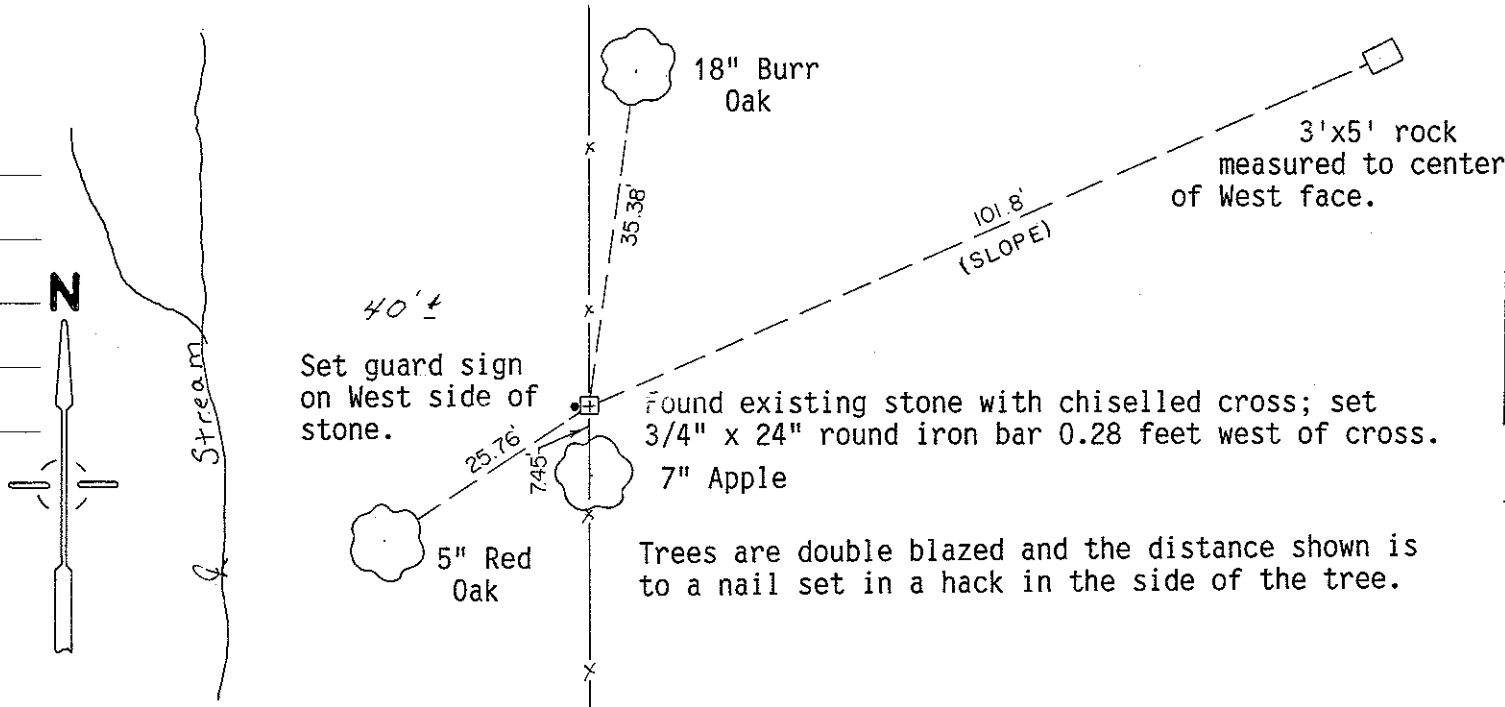
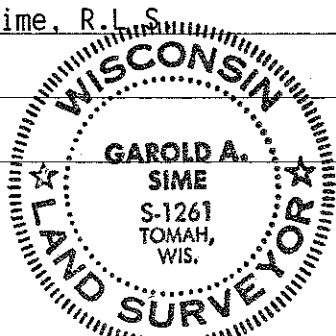
Description of corner and witness monuments, references and accessories used to perpetuate the original or re-established location of this corner:

Witnesses to corner location:

John F. Kenworthy

Brian Forsythe

Garold A. Sime, R.L.S.



SURVEY CONTROL ORDER

Horizontal	_____
Vertical	_____

WISCONSIN COORDINATE SYSTEM

Corner	East (X)	North (Y)	Elevation (Z)	Zone
Control Sta. Name				

~~City, Village or~~ Town of Sheldon  
County of Monroe