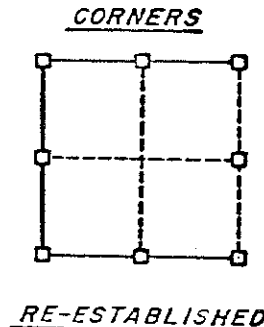
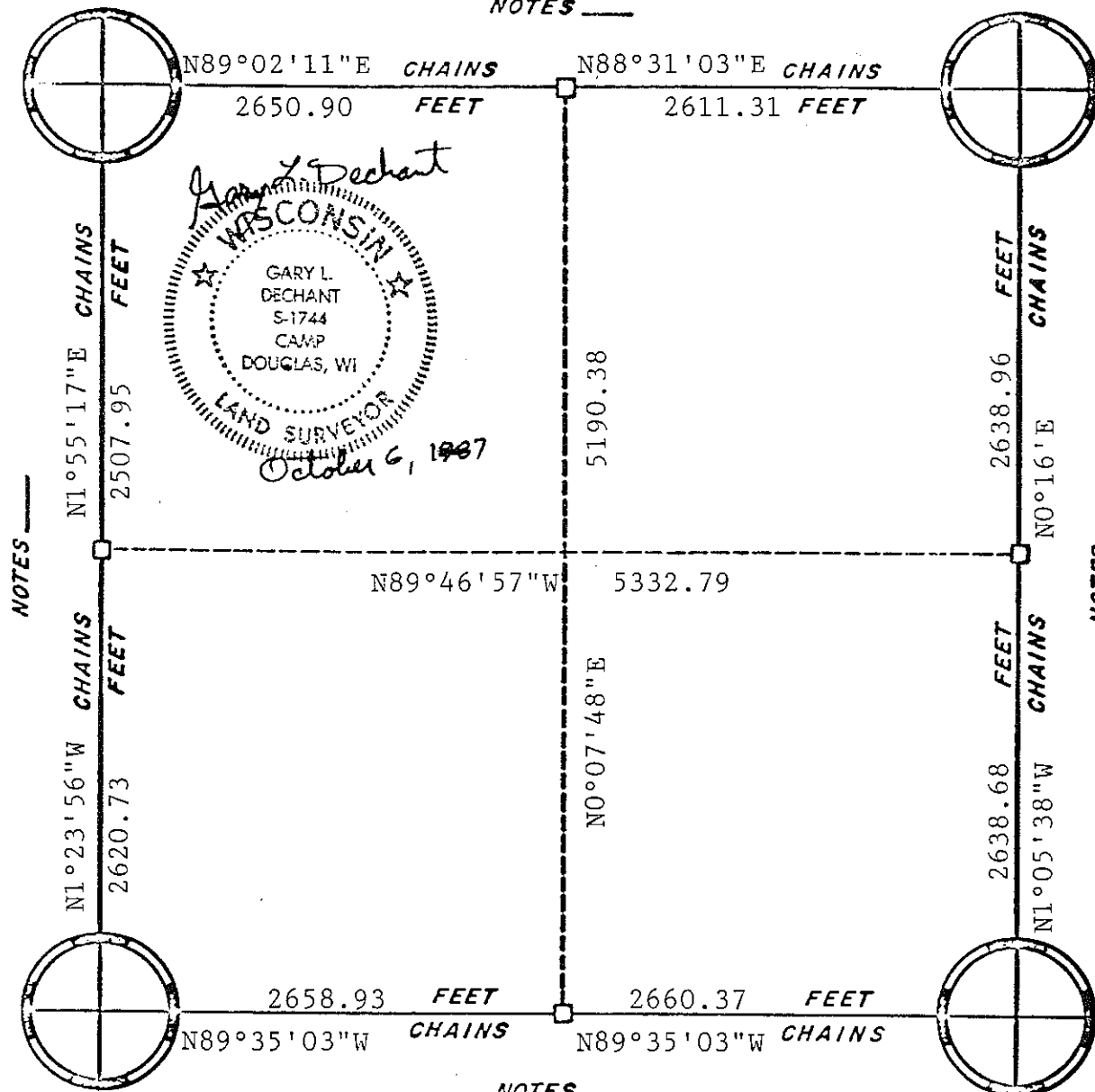


NOTES _____



NOTES _____

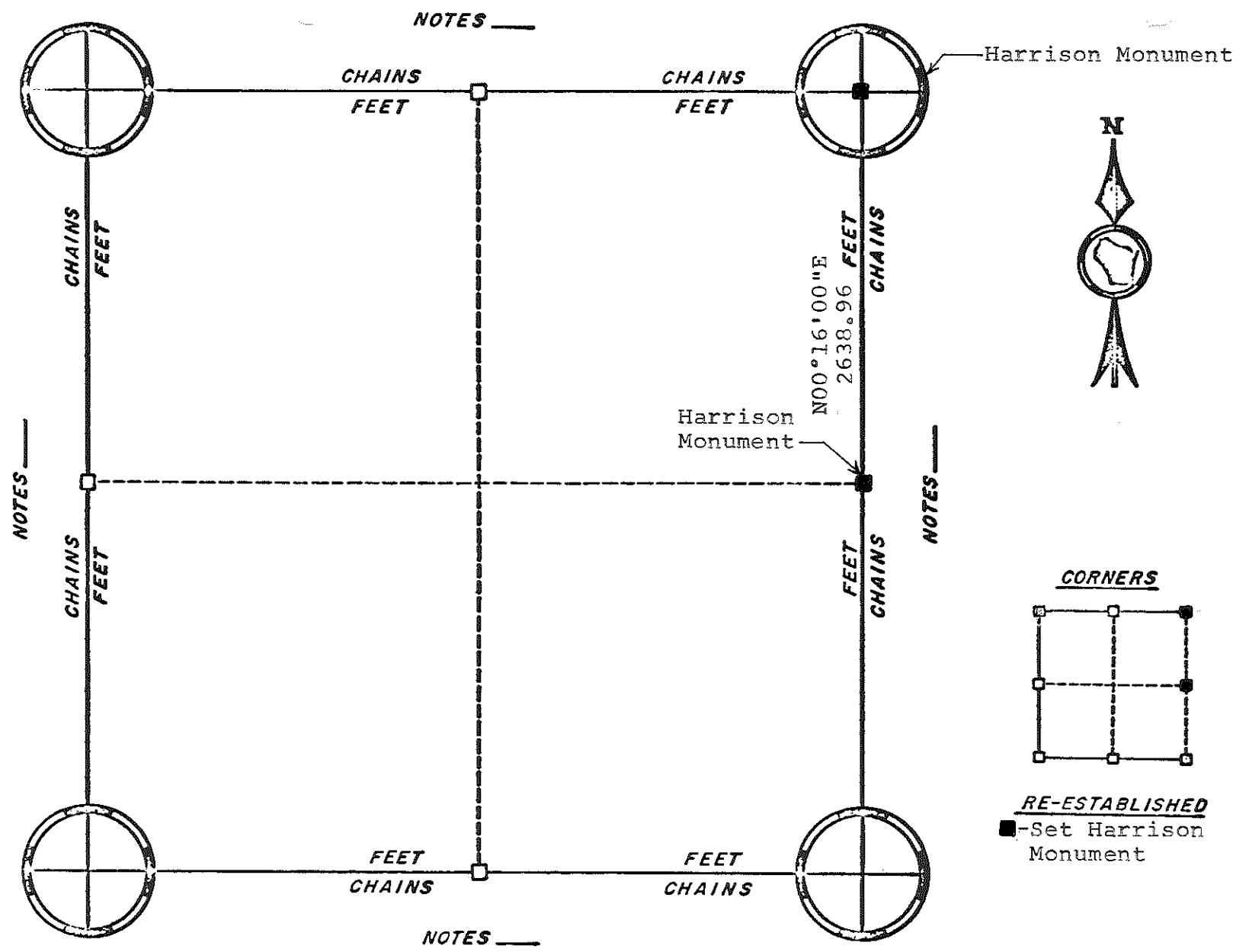
NOTES _____

NOTES _____

ORIGINAL SURVEY DATA

BY _____
 DATE _____

SURVEYED BY Gary L. Dechant	CONTRACT DATE Sept.-Oct. 1987	COUNTY MONROE [REDACTED]	TOWN-VILLAGE-CITY Wilton	SECTION 1	TOWNSHIP 16N	RANGE 1W
--------------------------------	----------------------------------	-----------------------------	-----------------------------	--------------	-----------------	-------------



NOTES _____

NOTES _____

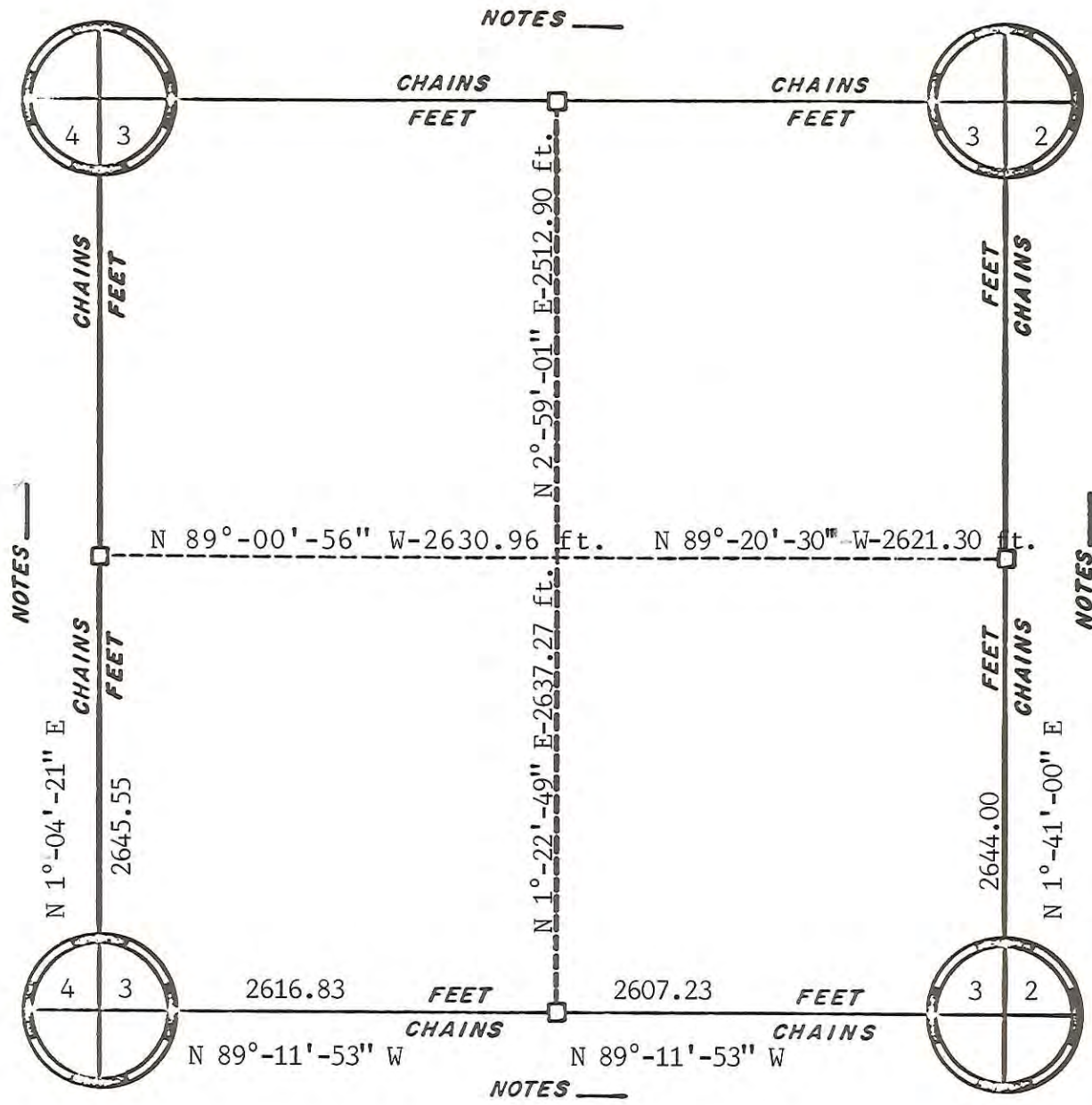
NOTES _____

NOTES _____

ORIGINAL SURVEY DATA

BY _____
DATE June 1982

SURVEYED BY L. A. Feddersen	CONTRACT DATE June 1982	COUNTY MONROE [REDACTED]	TOWN-VILLAGE Wilton	SECTION 1	TOWNSHIP 16N	RANGE 1W
--------------------------------	----------------------------	-----------------------------	------------------------	--------------	-----------------	-------------



Revised July 1985

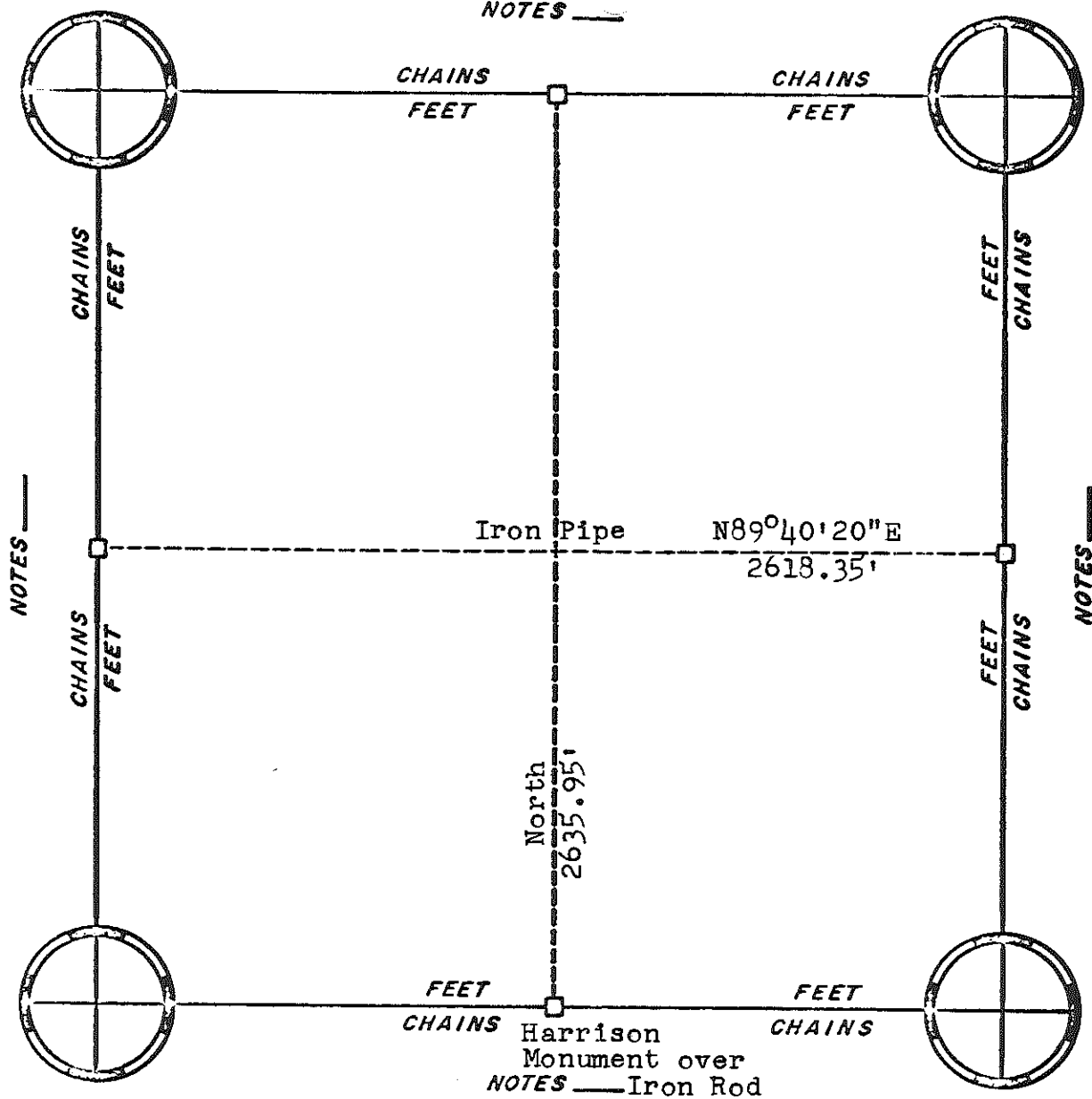
BY _____

DATE Aug. 1984

ORIGINAL SURVEY DATA

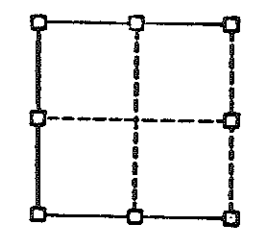
SURVEYED BY Ronald Parish	CONTRACT DATE	COUNTY MONROE	TOWN-VILLAGE-CITY Wilton	SECTION 3	TOWNSHIP 16 N.	RANGE 1 W.
------------------------------	---------------	---------------	-----------------------------	--------------	-------------------	---------------

NOTES _____



Harrison Monument

CORNERS



RE-ESTABLISHED

Harrison Monument over
 NOTES — Iron Rod

ORIGINAL SURVEY DATA

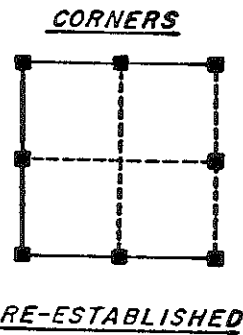
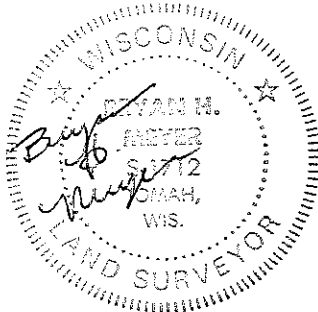
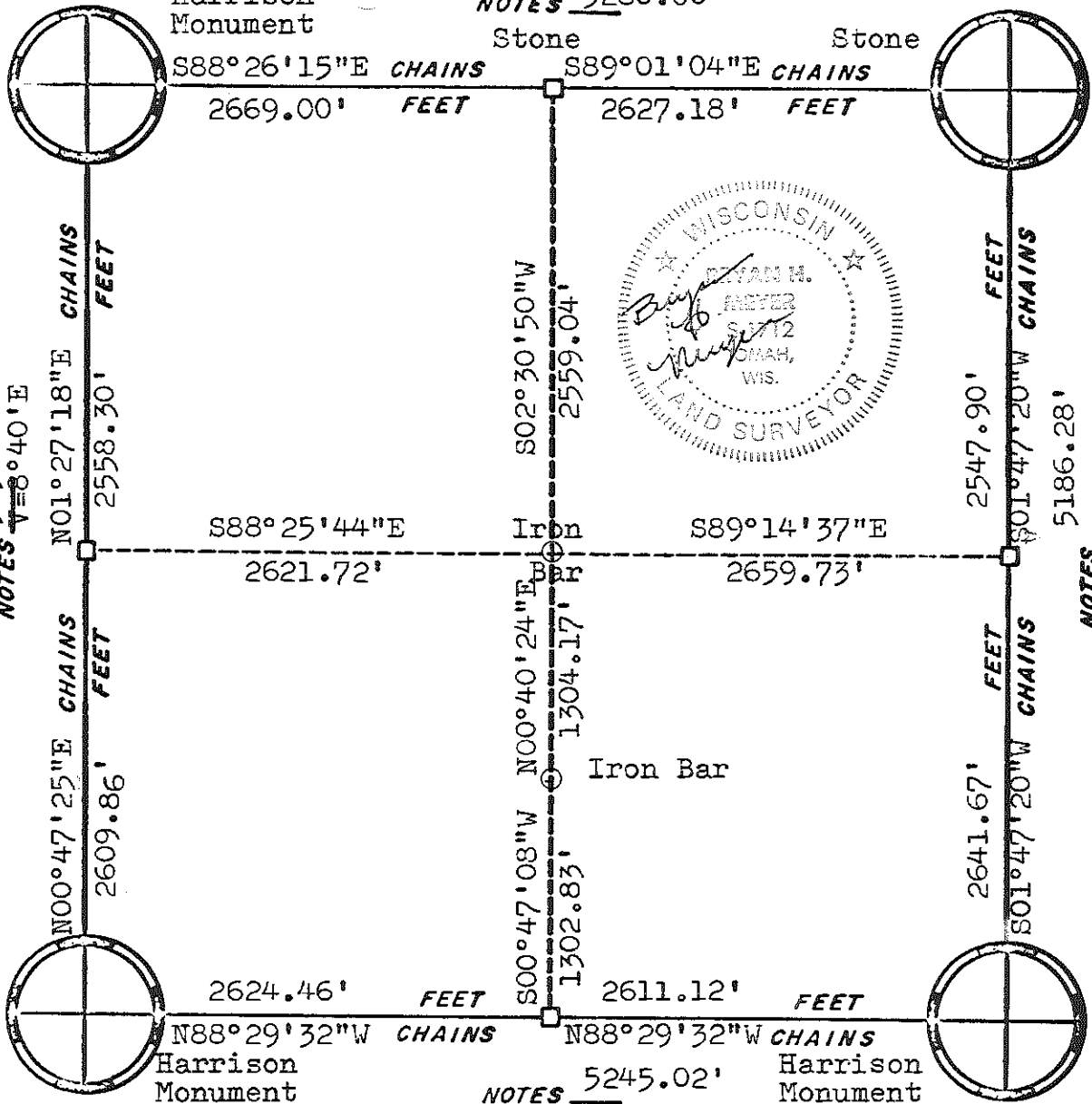
BY _____

DATE 3/1/79

SURVEYED BY G. A. Sime	CONTRACT DATE August 1977	COUNTY MONROE [REDACTED]	TOWN-VILLAGE-CITY Wilton	SECTION 4	TOWNSHIP 16N	RANGE 1W
---------------------------	------------------------------	-----------------------------	-----------------------------	--------------	-----------------	-------------

V=8°35' E

NOTES 5280.00'



NOTES 5154.60'
V=8°40' E

NOTES 5186.28'
V=8°26' E

NOTES 5245.02'
V=8°25' E

ORIGINAL SURVEY DATA

BY _____
DATE _____

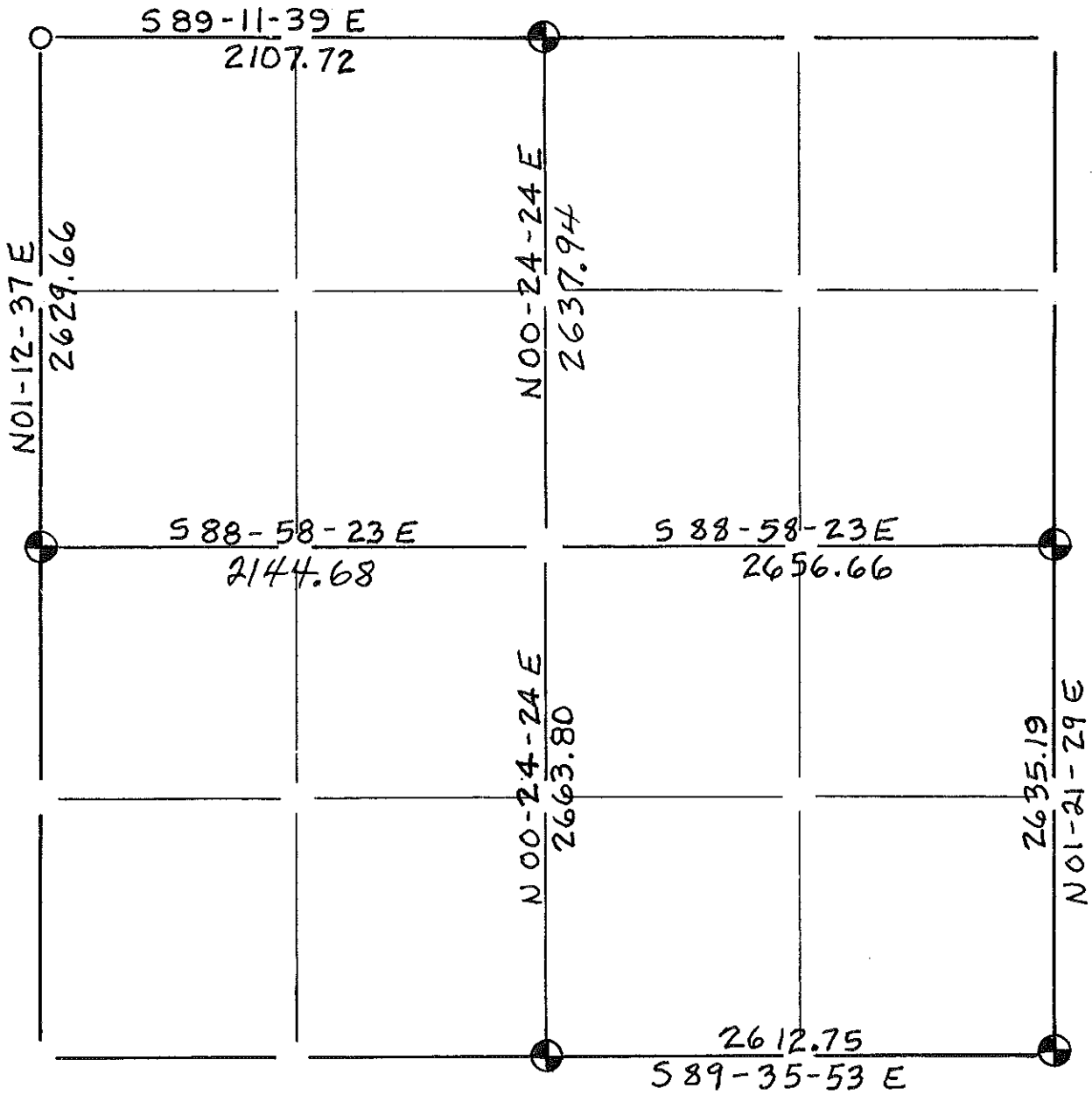
SURVEYED BY H.A. Sime & Associates	CONTRACT DATE April, 1981	COUNTY MONROE	TOWN-VILLAGE-CITY Wilton	SECTION 5	TOWNSHIP 16N	RANGE 1W
--	------------------------------	------------------	-----------------------------	--------------	-----------------	-------------

Chains

Section Summary and Index

7 - 16 - 1W
 Section Town Range

TOWN OF WILTON



LEGEND

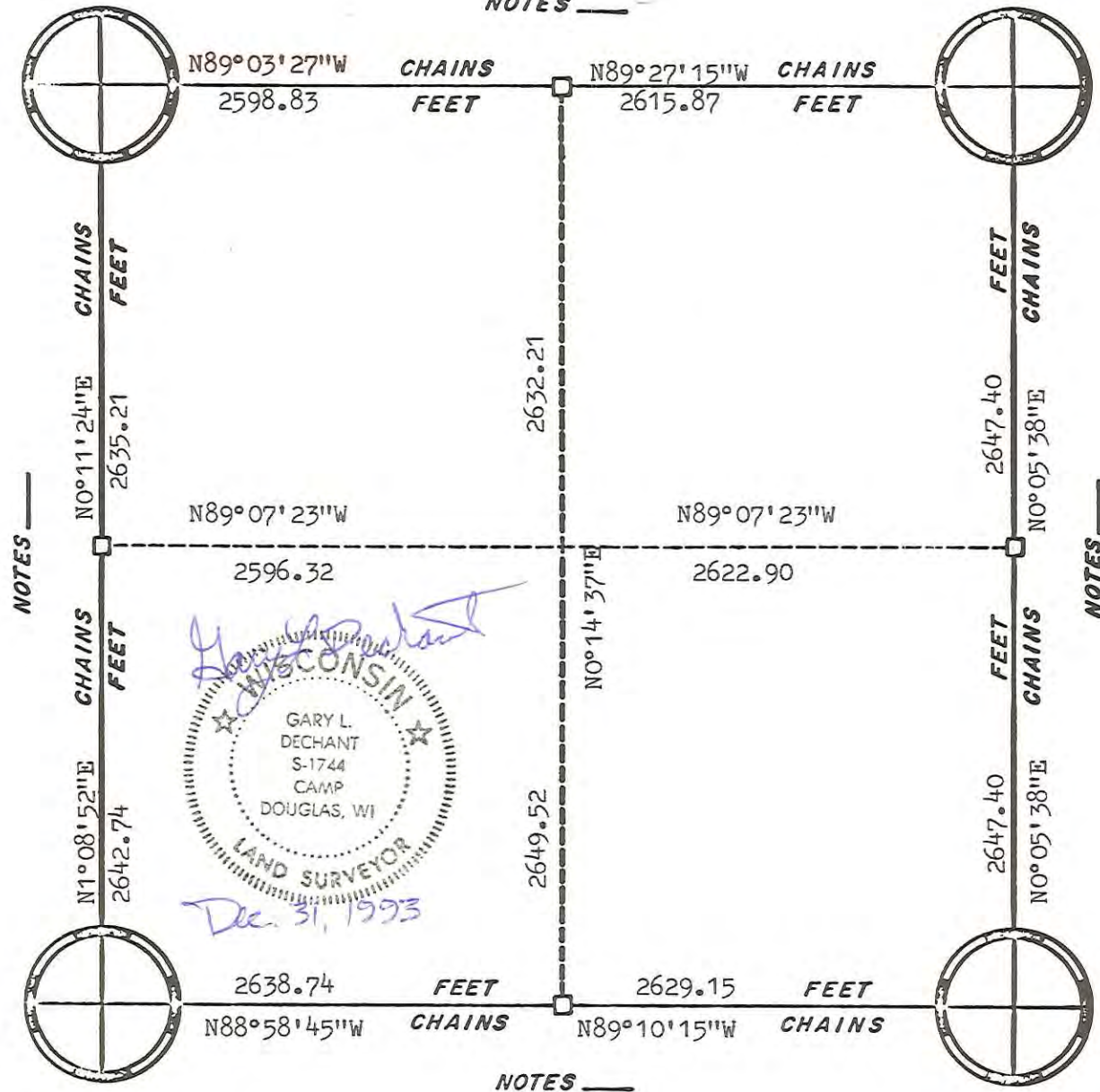
- - Harrison cast iron monument.
- - Stone or concrete monument.
- - Other Mag nail @ E-E

Carroll
Surveying
Mauston
Wis.

WISCONSIN
 PATRICK A. CARROLL
 S-1199
 MAUSTON WIS.
 LAND SURVEYOR

02/07/01

NOTES

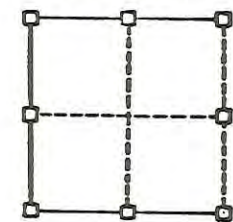


NOTES

NOTES

NOTES

CORNERS



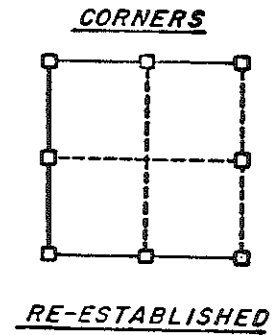
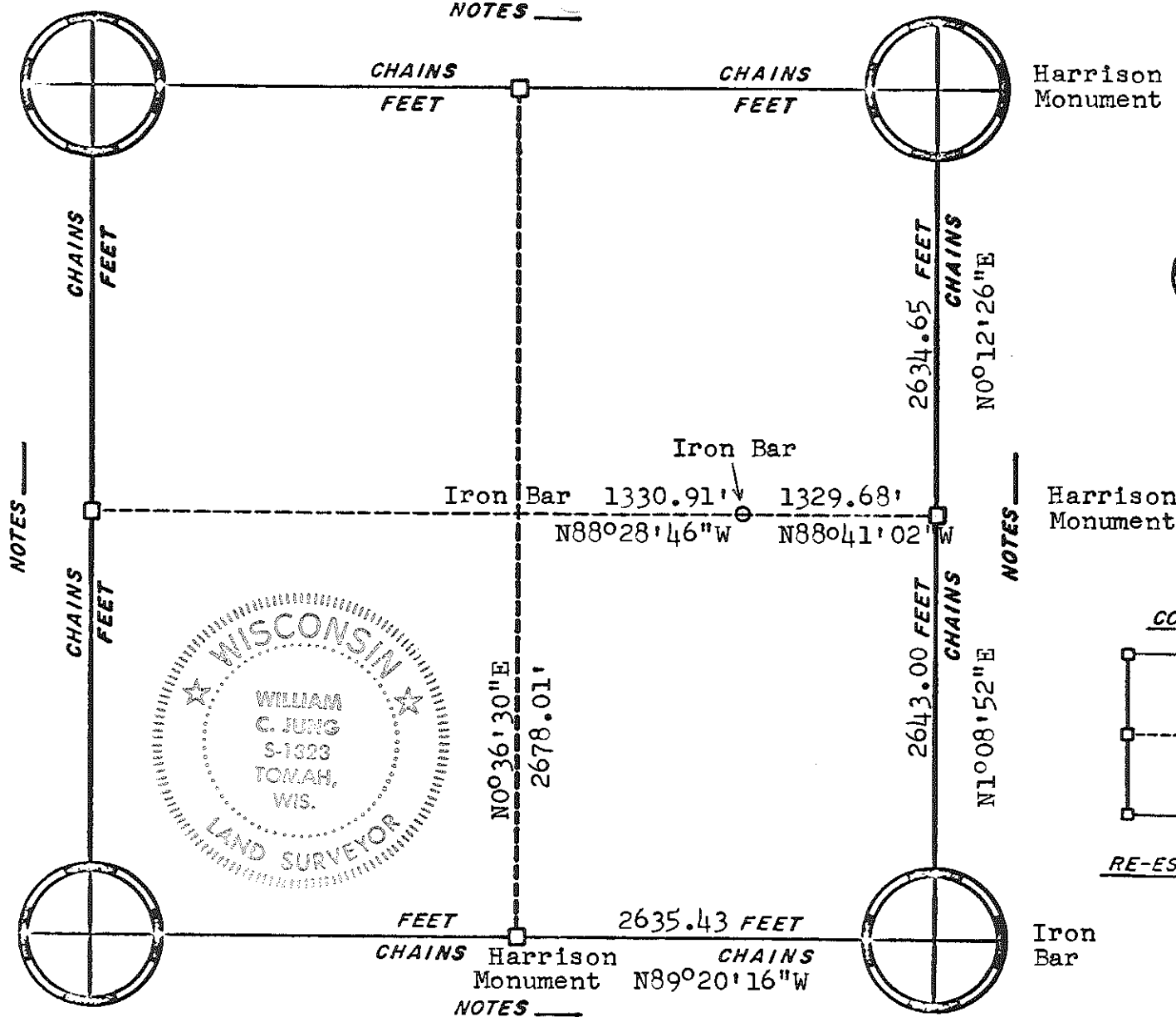
RE-ESTABLISHED

ORIGINAL SURVEY DATA

BY _____
DATE _____

SURVEYED BY G. L. Dechant	CONTRACT DATE Dec. 31, 1993	COUNTY MONROE	TOWN-VILLAGE-CITY Wilton	SECTION 14	TOWNSHIP 16N	RANGE 1 W
------------------------------	--------------------------------	---------------	-----------------------------	---------------	-----------------	--------------

NOTES _____



ORIGINAL SURVEY DATA

BY W.C.J.

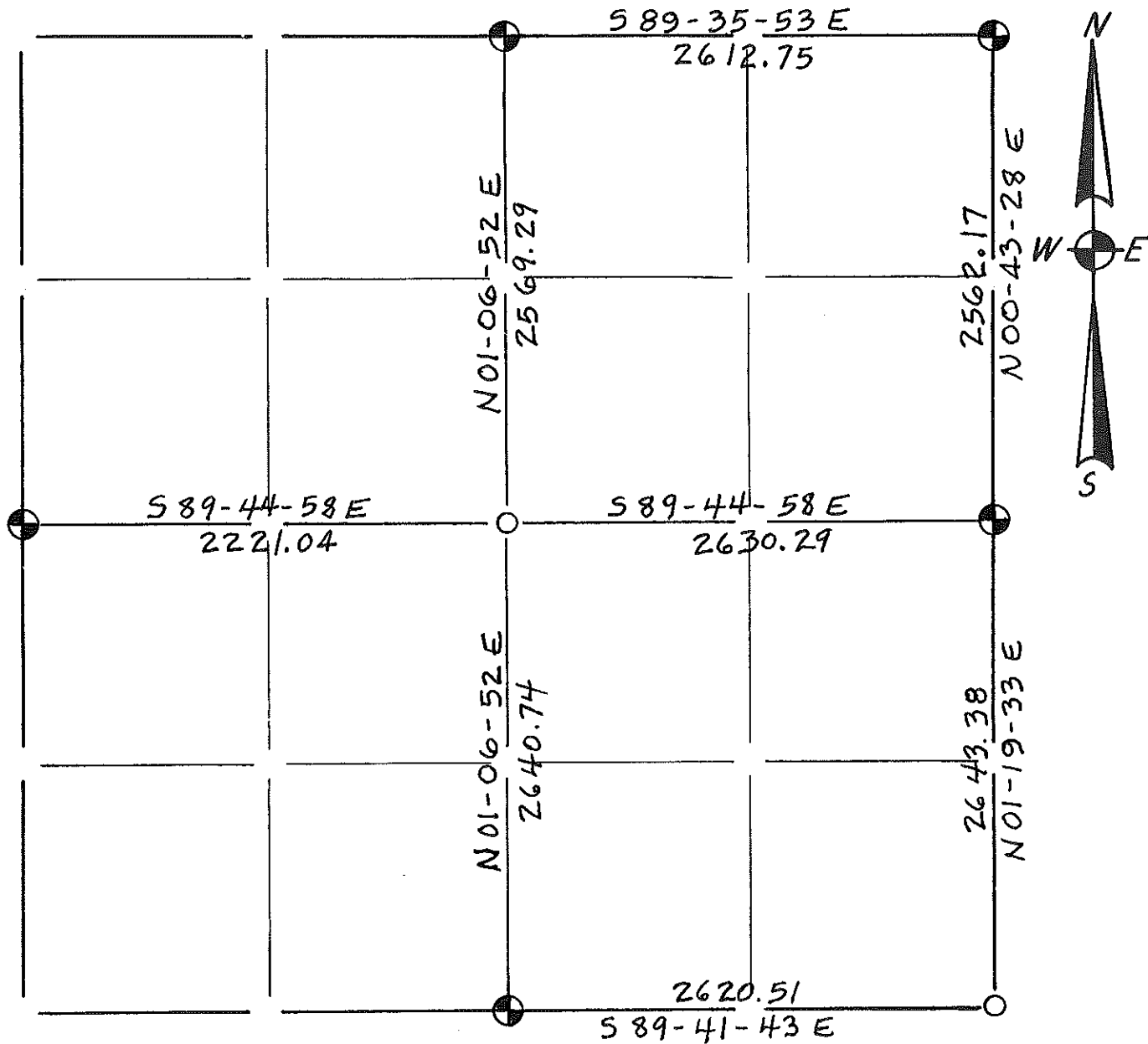
DATE 3/7/79

SURVEYED BY W. C. Jung	CONTRACT DATE October 1977	COUNTY MONROE	TOWN-VILLAGE-CITY Wilton	SECTION 15	TOWNSHIP 16N	RANGE 1W
---------------------------	-------------------------------	---------------	-----------------------------	---------------	-----------------	-------------

Section Summary and Index

18 - 16 - 1W
 Section Town Range

TOWN OF WILTON



LEGEND

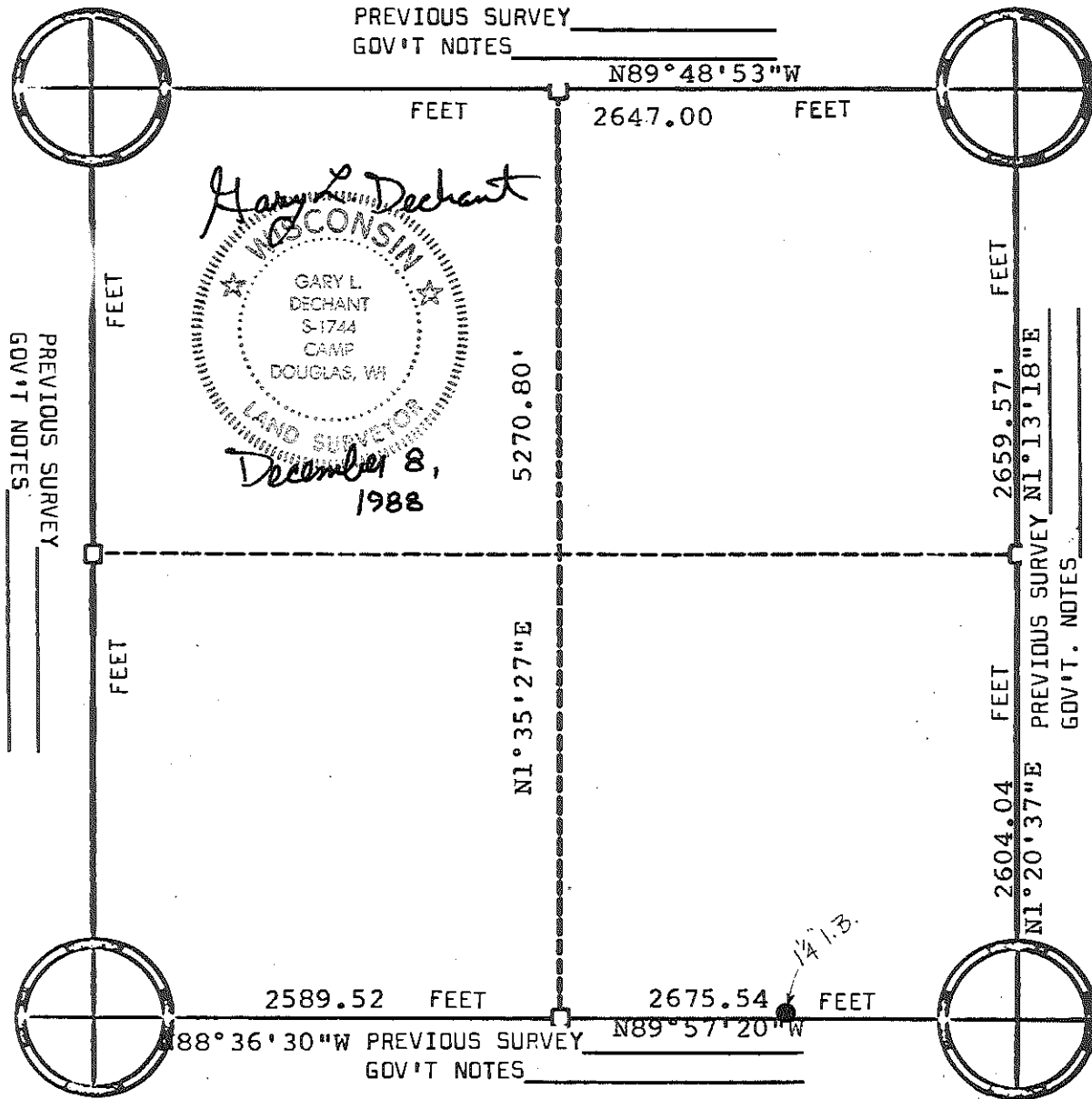
- - Harrison cast iron monument.
- - Stone or concrete monument.
- - Other 1" iron bar



*Carroll
 Surveying
 Mauston
 Wis.*

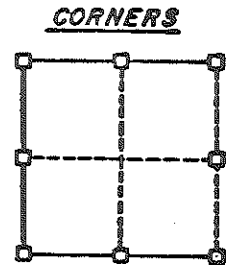
02/02/01

DATE _____



Gary L. Dechant
 WISCONSIN
 GARY L. DECHANT
 S-1744
 CAMP DOUGLAS, WI
 LAND SURVEYOR
December 8, 1988

PREVIOUS SURVEY _____
 GOV'T NOTES _____

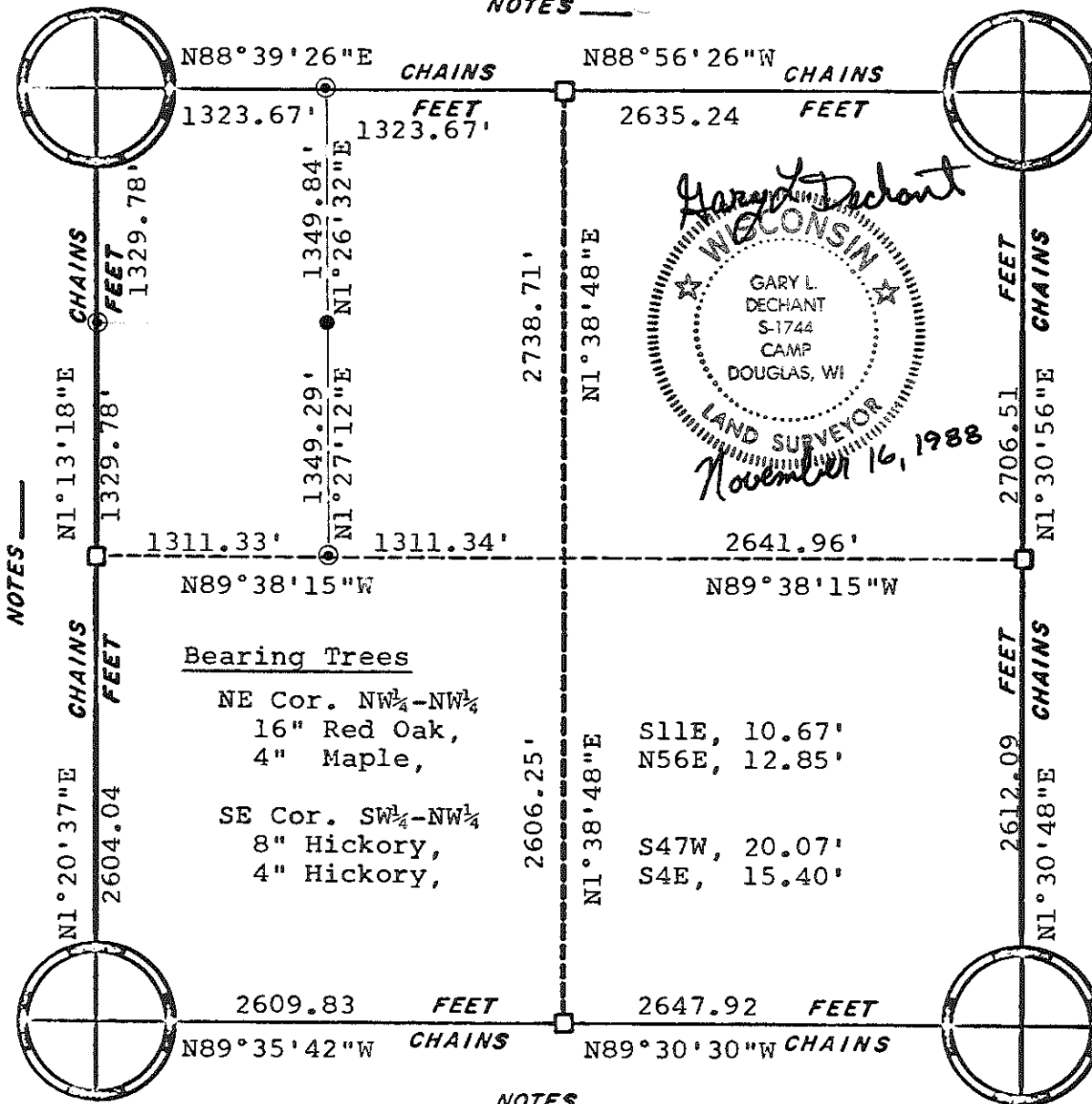


RECORDED CORNERS

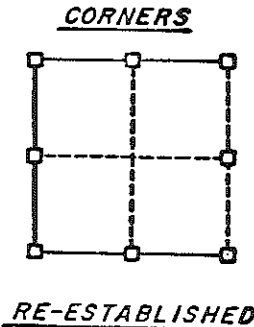
FEDDERSON
 ENGINEERING & SURVEYING
 BY

SURVEYED BY G.L. Dechant	FILE NO. Dec. 8, 1988	COUNTY Monroe	TOWN-VILLAGE-CITY Wilton	SECTION 21	TOWNSHIP 16N	RANGE 1W
-----------------------------	--------------------------	------------------	-----------------------------	---------------	-----------------	-------------

NOTES _____



- NOTES _____
- ⊙ = Set 1 $\frac{1}{4}$ " x 30" Round iron bar
 - = Ex. 3/4" Round iron bar



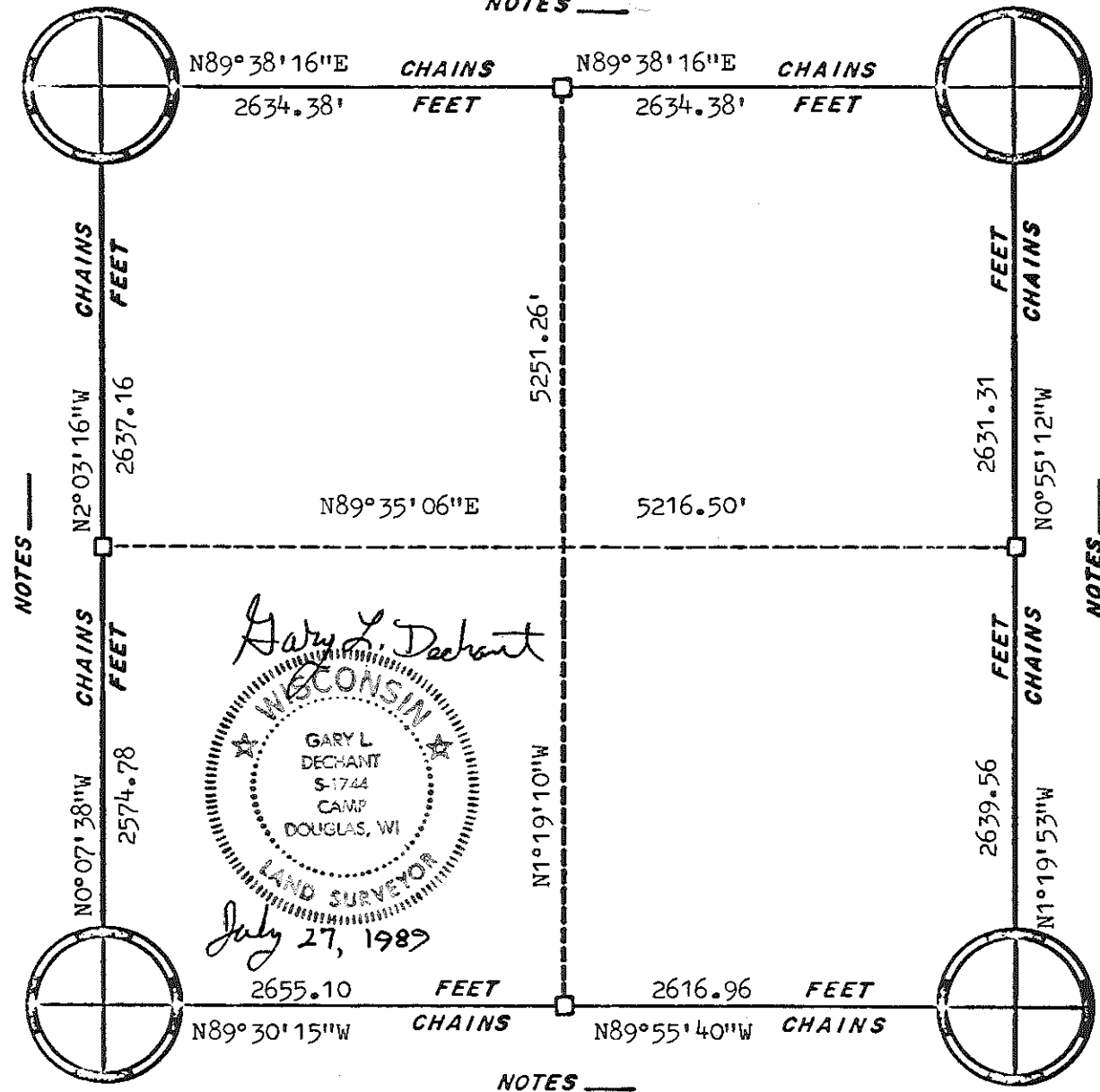
Both NE corner of NW $\frac{1}{4}$ -NW $\frac{1}{4}$ & SE corner SW $\frac{1}{4}$ -NW $\frac{1}{4}$ set by G. A. Sime were moved or pulled, reset them as shown. BY _____

ORIGINAL SURVEY DATA

DATE _____

SURVEYED BY G.L. Dechant	CONTRACT DATE Nov. 16, 1988	COUNTY MONROE _____	TOWN-VILLAGE-CITY Wilton	SECTION 22	TOWNSHIP 16N	RANGE 1W
-----------------------------	--------------------------------	------------------------	-----------------------------	---------------	-----------------	-------------

NOTES _____

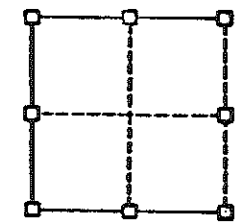


NOTES _____

NOTES _____

NOTES _____

CORNERS



RE-ESTABLISHED

ORIGINAL SURVEY DATA

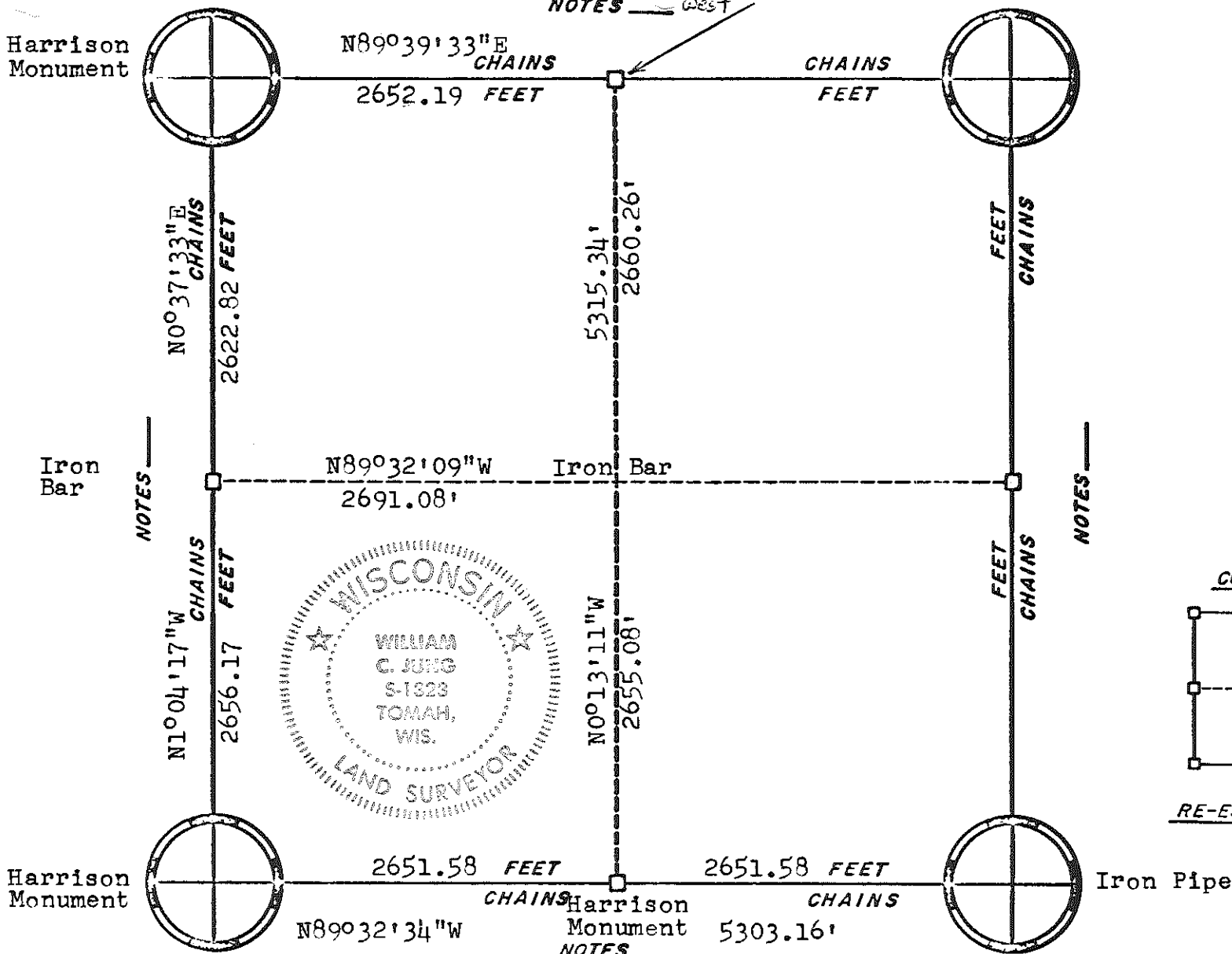
BY _____



DATE _____

SURVEYED BY	CONTRACT DATE	COUNTY MONROE	TOWN-VILLAGE-CITY	SECTION	TOWNSHIP	RANGE
G.L. Dechant	July 27, 1989	██████████	Wilton	24	16N	1W

Iron Bar (Witness Corner)
16.5' west of corner.
NOTES West

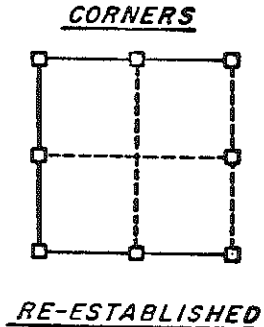
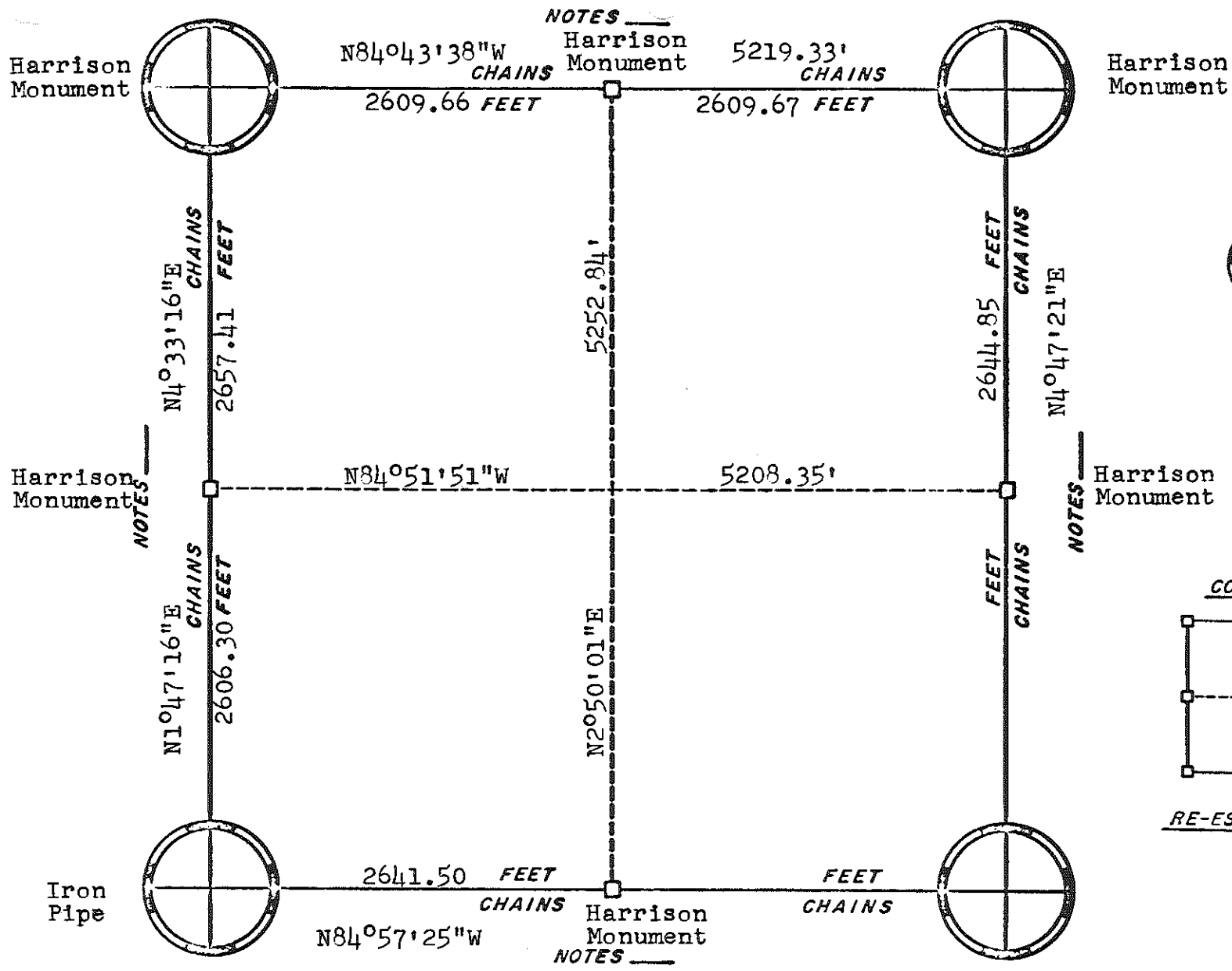


ORIGINAL SURVEY DATA

BY W.C.J.

DATE 3/7/79

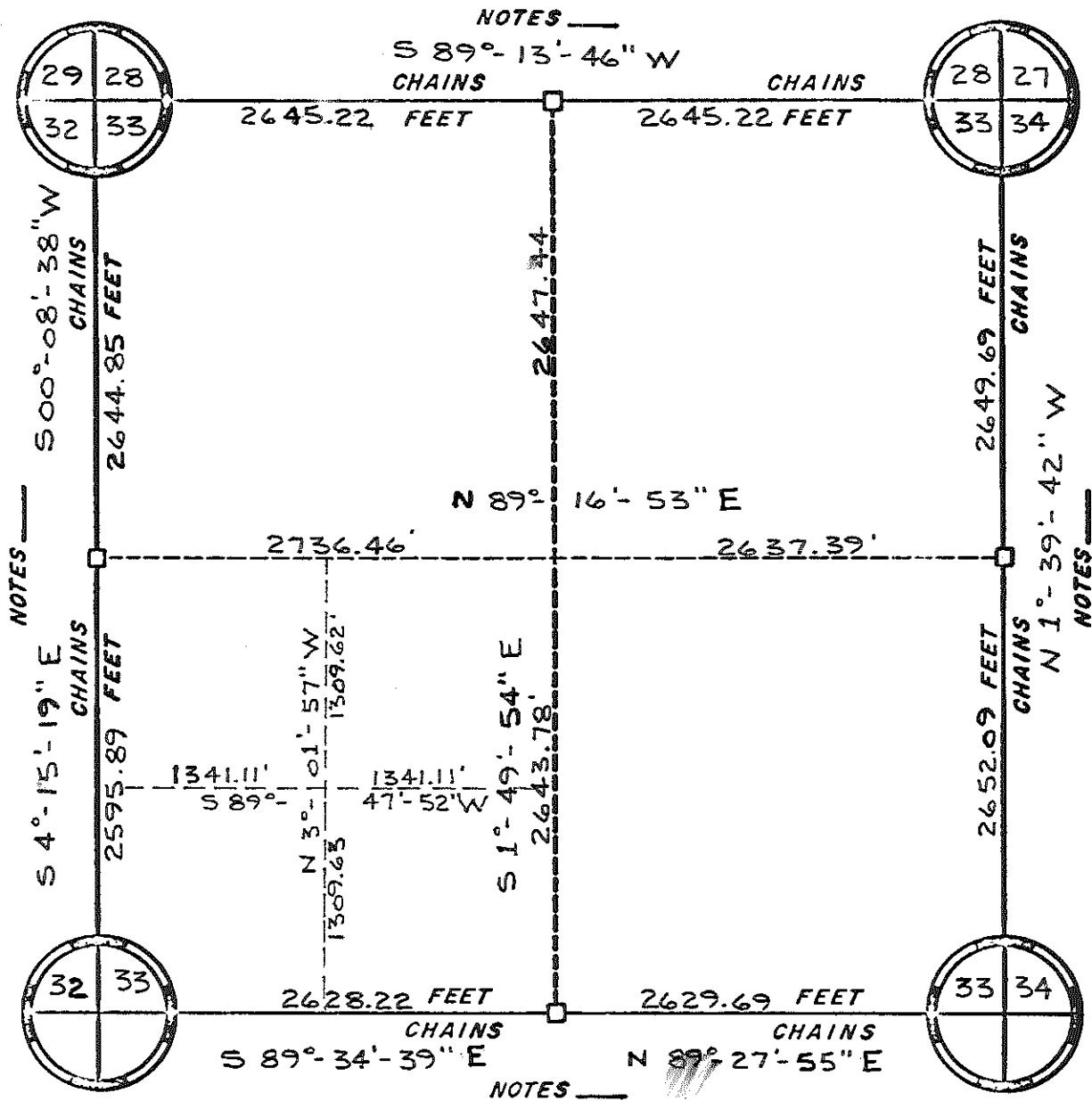
SURVEYED BY	CONTRACT DATE	COUNTY MONROE	TOWN-VILLAGE-CITY	SECTION	TOWNSHIP	RANGE
W. C. Jung	October 1977		Wilton	26	16N	1W



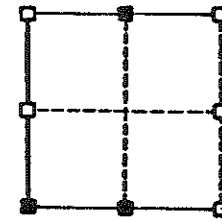
ORIGINAL SURVEY DATA

BY _____
DATE 3/7/79

SURVEYED BY D. Marten	CONTRACT DATE August 1973	COUNTY MONROE	TOWN-VILLAGE-CITY Wilton	SECTION 32	TOWNSHIP 16N	RANGE 1W
--------------------------	------------------------------	---------------	-----------------------------	---------------	-----------------	-------------



CORNERS



RE-ESTABLISHED

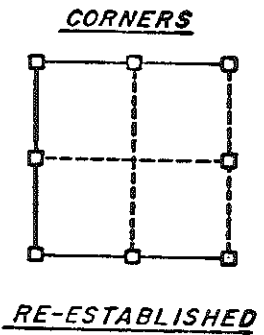
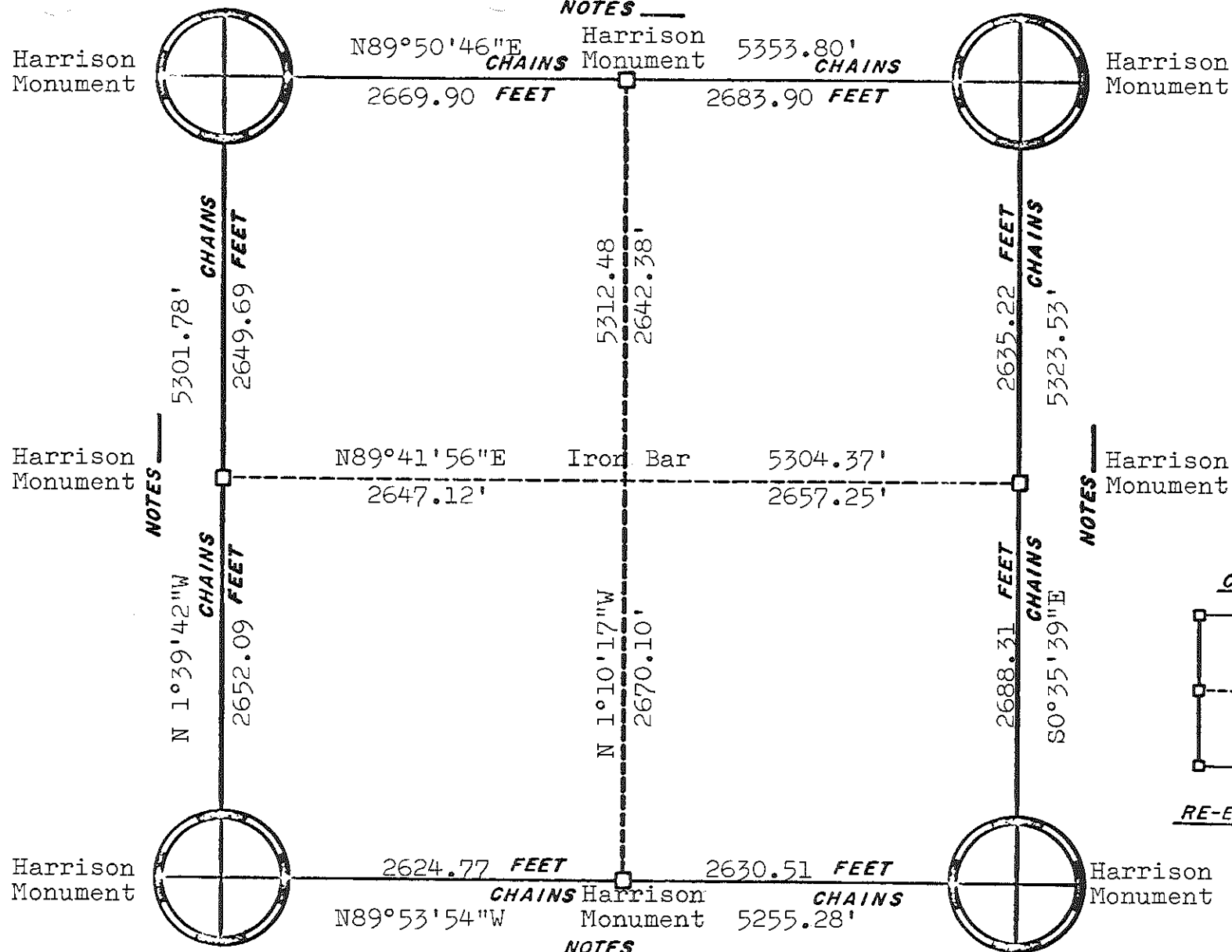
ORIGINAL SURVEY DATA

BY

DATE FEB 10, 1983

SURVEYED BY R. PARISH	CONTRACT DATE	COUNTY MONROE	TOWN-VILLAGE-CITY WILTON	SECTION 33	TOWNSHIP T 16 N	RANGE R 1 W
--------------------------	---------------	---------------	-----------------------------	---------------	--------------------	----------------

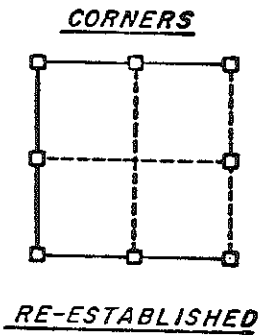
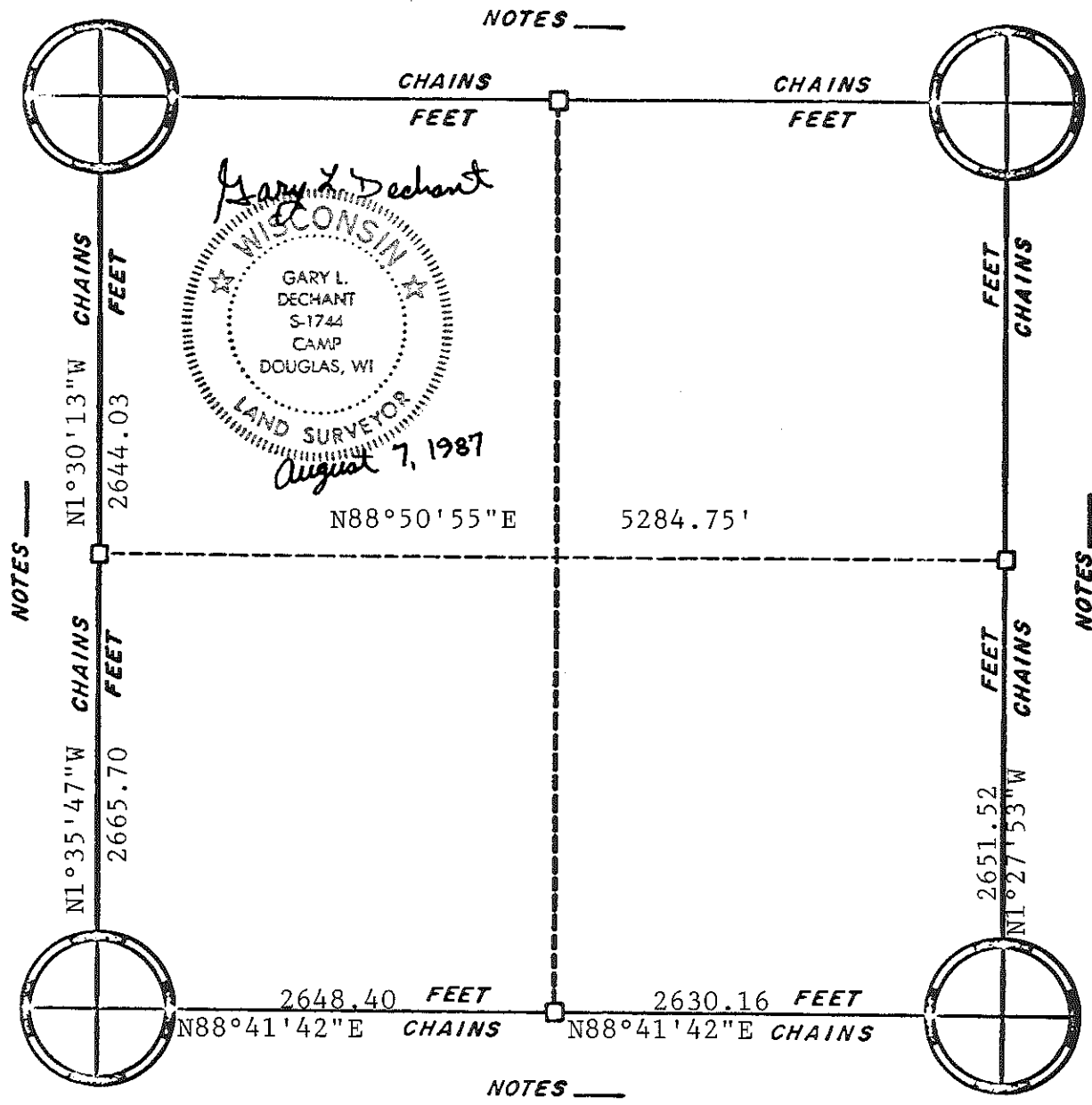
NOTES _____



ORIGINAL SURVEY DATA

BY _____
DATE 3/19/81

SURVEYED BY H. A. Sime	CONTRACT DATE September, 1980	COUNTY MONROE	TOWN- VILLAGE CITY Wilton	SECTION 34	TOWNSHIP T16N	RANGE R1W
---------------------------	----------------------------------	---------------	---	---------------	------------------	--------------



ORIGINAL SURVEY DATA

BY _____
DATE _____

SURVEYED BY Gary L. Dechant	CONTRACT DATE Aug. 7, 1987	COUNTY MONROE ██████████	TOWN-VILLAGE-CITY Wilton	SECTION 36	TOWNSHIP 16N	RANGE 1W
--------------------------------	-------------------------------	-----------------------------	-----------------------------	---------------	-----------------	-------------