

122

**U.S. PUBLIC LAND CORNER
MAINTENANCE**

Corner ID : S1/4 Sec36, T16N-R1W

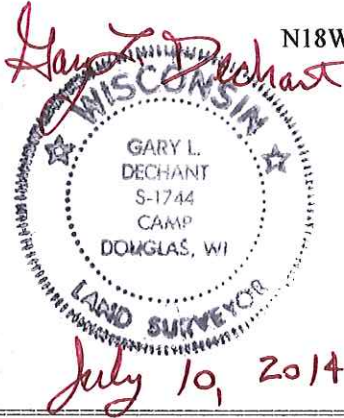
21601360020

<u>DATE</u>	<u>CREW</u>	<u>MONUMENT TYPE -----</u>
July 10, 2014	Zachariah P.Dechant Gary L. Dechant	Found Harrison in tact, 10' south of fence corner 66'± NE of centerline PI of CTH "V", sign 1' north

References:

	<u>Bearing</u>	<u>Distance</u>
1) Set 3/4"x24" hex iron bar, down 8", 10' north of 6" Hickory	N24E	21.23'
2) Set 3/4"x 24" hex iron bar, down 8"	S45E	13.65'
3) Set 3/4"x24" hex iron bar, down 8", 54' NE centerline CTH "V"	S30W	12.32'
4) Set 3/4"x24" hex iron bar, down 8", wooded pasture	N18W	19.45'

COORDINATES:



I, Gary L. Dechant, do hereby certify that on the 4th day of August 1987, I found (evidence) ~~(no evidence)~~ of the N¹/₄ corner of Section 1, T 15 N, R 1 W Fourth Principal Meridian, and I re-established said corner according to the Wisconsin Statutes as shown and described hereon.

Dated this 7th day of August 1987.

Gary L. Dechant
Reg. Land Surveyor, S-1744
Title

History of corner establishment since Original Government Survey

A.S. Ingalls was here in June of 1873.
Fred Holden was here in April and May of 1901.

Description of corner evidence found:

Accepted rotted fence corner location as best available evidence of the corner.

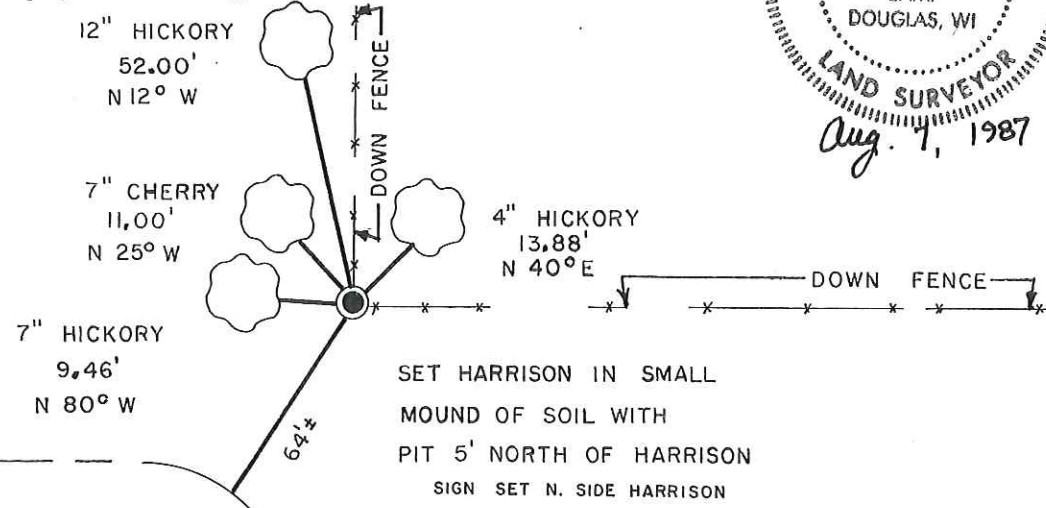
**See Reverse Side
For Maintenance**

Description of corner and witness monuments, references and accessories used to perpetuate the original or re-established location of this corner:

Witnesses to corner location:

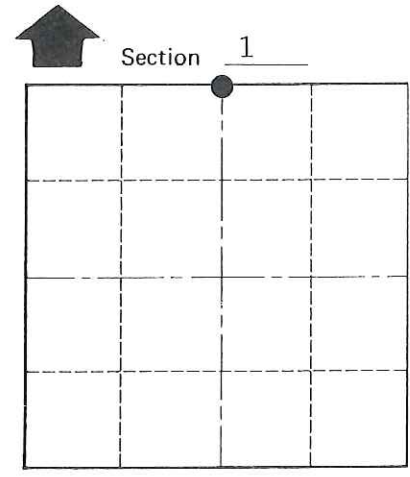
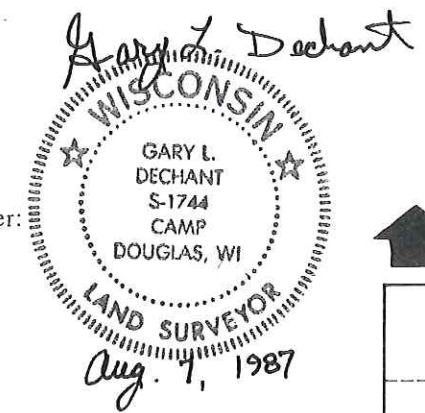
David E. Madison

Gary L. Dechant



SET HARRISON IN SMALL MOUND OF SOIL WITH PIT 5' NORTH OF HARRISON SIGN SET N. SIDE HARRISON

(Trees double blazed with nails set)



O = LOCATION CORNER
T 15 N R 1 W
WISCONSIN

SURVEY CONTROL ORDER

Horizontal	_____
Vertical	_____

WISCONSIN COORDINATE SYSTEM

Corner	East (X)	North (Y)	Elevation (Z)	Zone
Control Sta. Name				

~~City or Village~~ Town Wellington
County of Monroe

COUNTY SURVEYOR FORM NO. 1