

116

**U.S. PUBLIC LAND CORNER
MAINTENANCE**

**Corner ID : E1/4 Sec.32, T16N-R1W
21601322000**

| <u>DATE</u> | <u>CREW</u> | <u>MONUMENT TYPE -----</u> |
|-------------------|--|--|
| January 22,, 2015 | Zachariah P.Dechant Gary L. Dechant | Found Harrison in tact. Tie sheet dated March 1978 shows Harrison at rounded fence corner. Harrison is now 11' north & 4' east of present fence corner. Harrison location was verified by dead Elm stump to the south and 16" Ash (mistakenly identified as a 12" dying Elm not so dead) to the NE. Also verified by our measured distance to NW corner of 2644.60 vs. 2644.53 by Garold Sime in Vol 9 CSM P. 71. |

References:

| | <u>Bearing</u> | <u>Distance</u> |
|--|----------------|-----------------|
| 1) Set 1"x24" iron pipe 15' SE of 6" White Pine | N20E | 49.71' |
| 2) Set 1"x24" iron pipe 9' SW of 16" Ash (previous BT) | N73E | 53.96' |
| 3) Set 1"x24" iron pipe 7' NW of 16" Box Elder | S83E | 19.77' |
| 4) Set 1"x24" iron pipe 3' north of 3" Hickory | S1E | 29.58' |



I, Harley A. Sime, do hereby certify that on the 17th day of March 1978, I found (evidence) (~~no evidence~~) of the E 1/4 corner of Section 32, T 16 N, R 1 W, Fourth Principal Meridian, and I re-established said corner according to the Wisconsin Statutes as shown and described hereon.

Dated this 20th day of March 1978.

Harley Sime
County Surveyor
Title

History of original corner establishment:

No known recorded history since the original government survey.

**See Reverse Side
For Maintenance**

Description of corner evidence found:

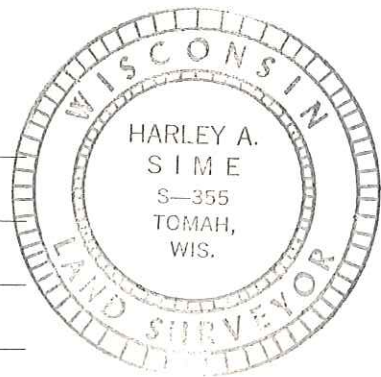
D. Marten, in June of 1973, replaced an existing iron bar in a 2-way fence corner with a Harrison Monument.

**Approved: HARLEY A. SIME
MONROE CO. SURVEYOR**

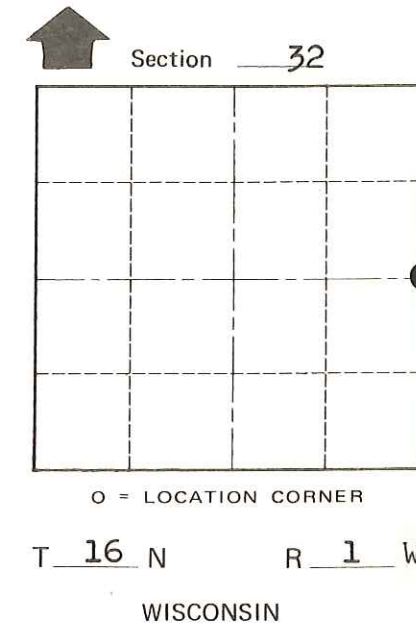
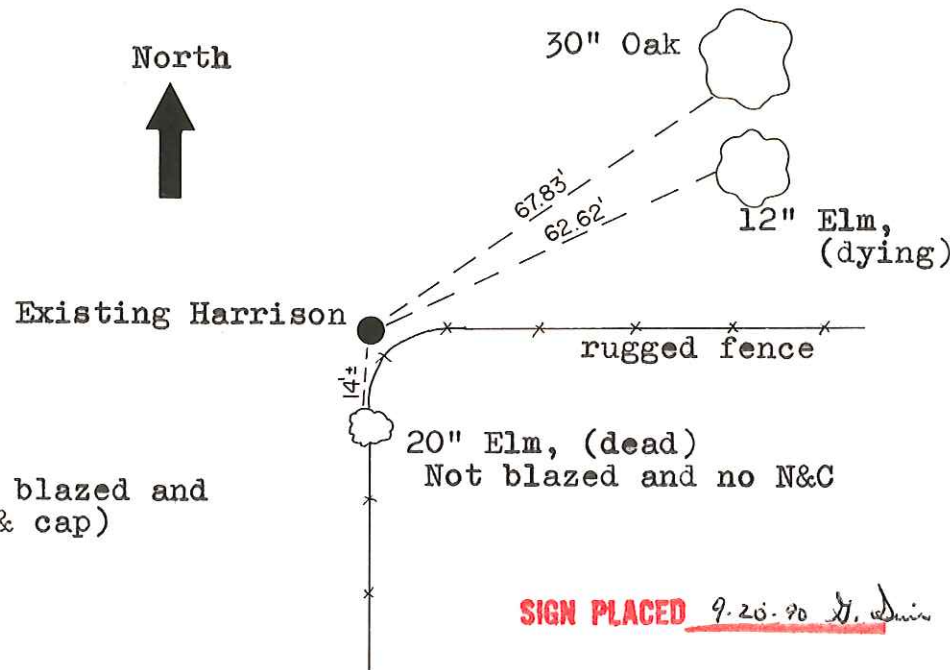
Description of corner and witness monuments, references and accessories used to perpetuate the original or re-established location of this corner:

Witnesses to corner location:

C. Pietz, Crew Chief
G. Dechant



(Trees double blazed and with nail & cap)



SIGN PLACED 9-20-78 *J. Sime*

SURVEY CONTROL ORDER

| | |
|------------|-------|
| Horizontal | _____ |
| Vertical | _____ |

WISCONSIN COORDINATE SYSTEM

| Corner | East (X) | North (Y) | Elevation (Z) | Zone |
|-------------------|----------|-----------|---------------|------|
| Control Sta. Name | | | | |

City, Village or Town Wilton

County of Monroe

COUNTY SURVEYOR FORM NO. 1