

36

**U.S. PUBLIC LAND CORNER
MAINTENANCE**

Corner ID : E1/4 Sec.8, T16N-R1W

21601082000

<u>DATE</u>	<u>CREW</u>	<u>MONUMENT TYPE -----</u>
July 24, 2014	Zachariah P.Dechant Gary L. Dechant	Found Harrison in tact. Placed concrete, with 6' anchor, around Harrison at fence corner.

References:

	<u>Bearing</u>	<u>Distance</u>
1) Set 18" T- post	North	6.06
2) Set 1/4"x18" iron bar	S80E	43.82'
3) Set 18" T-post	S20E	15.29'
4) Set 1/4"x18" iron bar	N80W	13.06'

COORDINATES:



I, Gary L. Dechant, do hereby certify that on the 5th day of April 1984, I found (evidence) ~~(no evidence)~~ of the W¹/₄ corner of Section 9, T 16 N, R 1 W Fourth Principal Meridian, and I re-established said corner according to the Wisconsin Statutes as shown and described hereon.

Dated this 23rd day of April 1984.

Gary L. Dechant
Reg. Land Surveyor, S-1744
Title

History of corner establishment since Original Government Survey

Fred Holden was here in Dec. of 1901 and March of 1902.

See Reverse Side
For Maintenance

Description of corner evidence found:

Accepted fence corner as best available evidence of the corner as it fits Fred Holden's distance to the SW corner within 5'± and fits his distance to the NW corner within 5'± also.

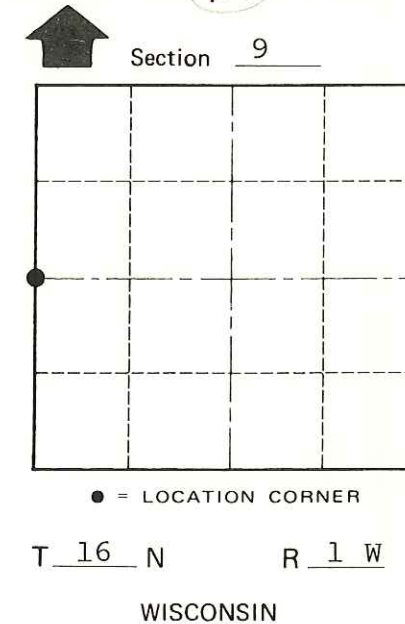
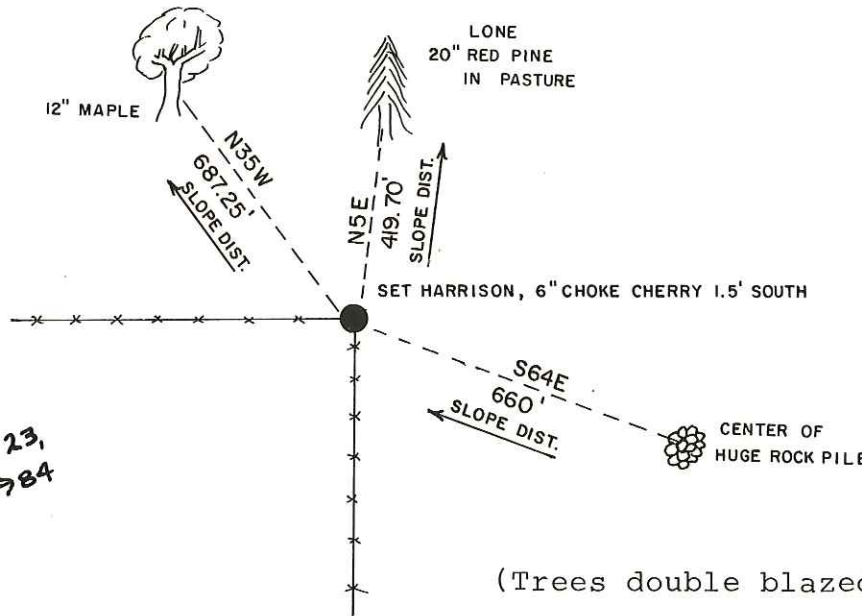
We looked for the drag tooth of record a forty south to help set the W¹/₄ corner, but according to Eli A. Borntreger, landowner, the drag tooth was knocked out when the road was put in to his farm. He pointed out where he recalled the drag tooth was before it was knocked out. His location would fit half way between the SW corner and W¹/₄ corner within 1.5'±, further supporting location of the W¹/₄ corner.

Description of corner and witness monuments, references and accessories used to perpetuate the original or re-established location of this corner:

Witnesses to corner location:

Lawrence A. Feddersen, S-1226

Gary L. Dechant



SURVEY CONTROL ORDER

Horizontal	_____
Vertical	_____

WISCONSIN COORDINATE SYSTEM

Corner	East (X)	North (Y)	Elevation (Z)	Zone
Control Sta. Name				

~~City, Village or~~ Town Wilton

County of Monroe

COUNTY SURVEYOR FORM NO. 1