

21601330020

I, RONALD D. PARISH, do hereby certify that on the 19th day of JANUARY 1983, I found ~~(evidence)~~ (no evidence) of the S 1/4 corner of SECTION 33, T 16 N, R 1 W Fourth Principal Meridian, and I re-established said corner according to the Wisconsin Statutes as shown and described hereon.

Dated this 11th day of FEB. 1983.

Ronald D. Parish, R.L.S.

Title

History of corner establishment since Original Government Survey
NO RECORDED HISTORY SINCE ORIGINAL SURVEY

Description of corner evidence found:

SET CORNER AT INTERSECTION OF 3 FENCE LINES
THIS FITS DISTANCE TO SE COR. OF SECTION REASONABLY WELL & FITS WITH THE REST OF THE SECTION

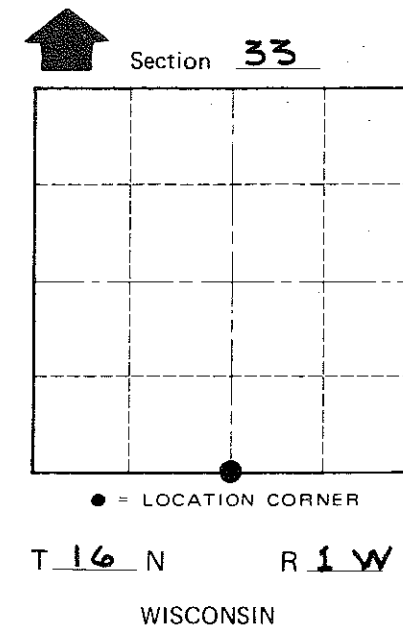
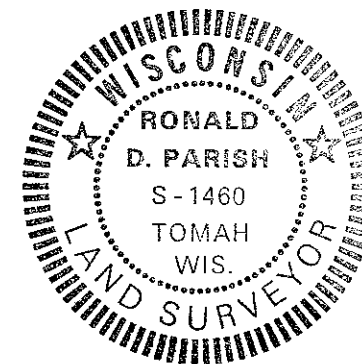
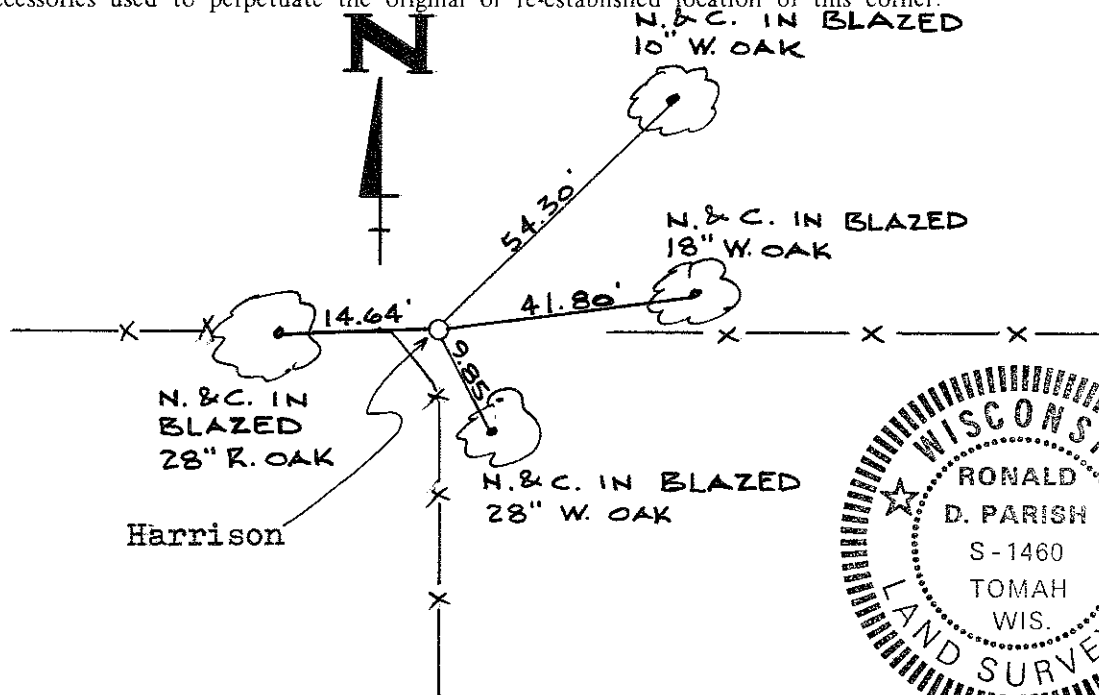
COUNTY SURVEYOR FORM NO. 1

Description of corner and witness monuments, references and accessories used to perpetuate the original or re-established location of this corner:

Witnesses to corner location:

RON PARISH

DAN DOWNING



Approved: **HARLEY A. SIME**
MONROE CO. SURVEYOR

SURVEY CONTROL ORDER

Horizontal	_____
Vertical	_____

WISCONSIN COORDINATE SYSTEM

Corner	East (X)	North (Y)	Elevation (Z)	Zone
Control Sta. Name				

City, Village or Town WILTON
County of MONROE