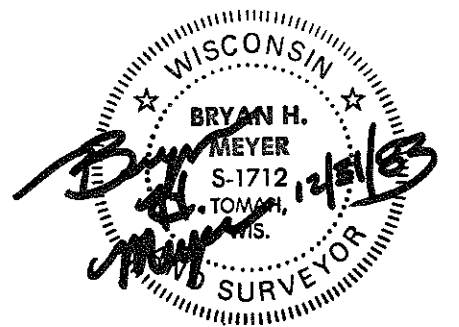


21601310020



I, Bryan H. Meyer, do hereby certify that on the 31st day of December 19 83, I found (evidence) ~~of the~~ of the North 1/4 corner of Section 6, T 15 N, R 1 W Fourth Principal Meridian, and I re-established said corner according to the Wisconsin Statutes as shown and described hereon.

Dated this 31st day of Dec. 19 83  
Bryan H. Meyer  
Deputy County Surveyor  
Title

History of corner establishment since Original Government Survey

I believe Fred Holden was here in an unrecorded and undated survey. Fred Zietlow was here in June of 1969 and set an iron bar.

Description of corner evidence found:

I was unable to find Mr. Zietlow's bar. I accepted a good 4 - way fence corner as the best available evidence.

COUNTY SURVEYOR FORM NO. 1

Description of corner and witness monuments, references and accessories used to perpetuate the original or re-established location of this corner:

Crew: Meyer, Perrigo  
Date: December 31, 1983

Witnesses to corner location:

Bryan H. Meyer

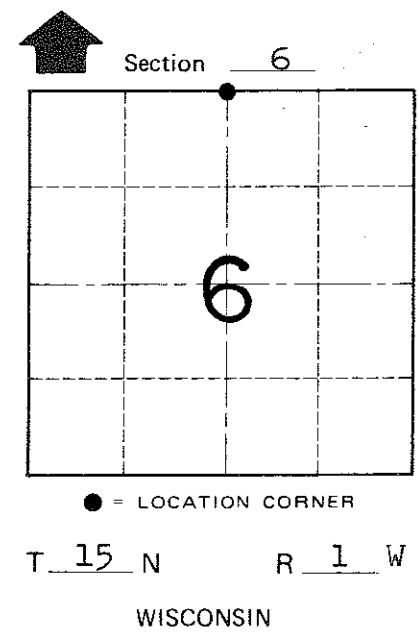
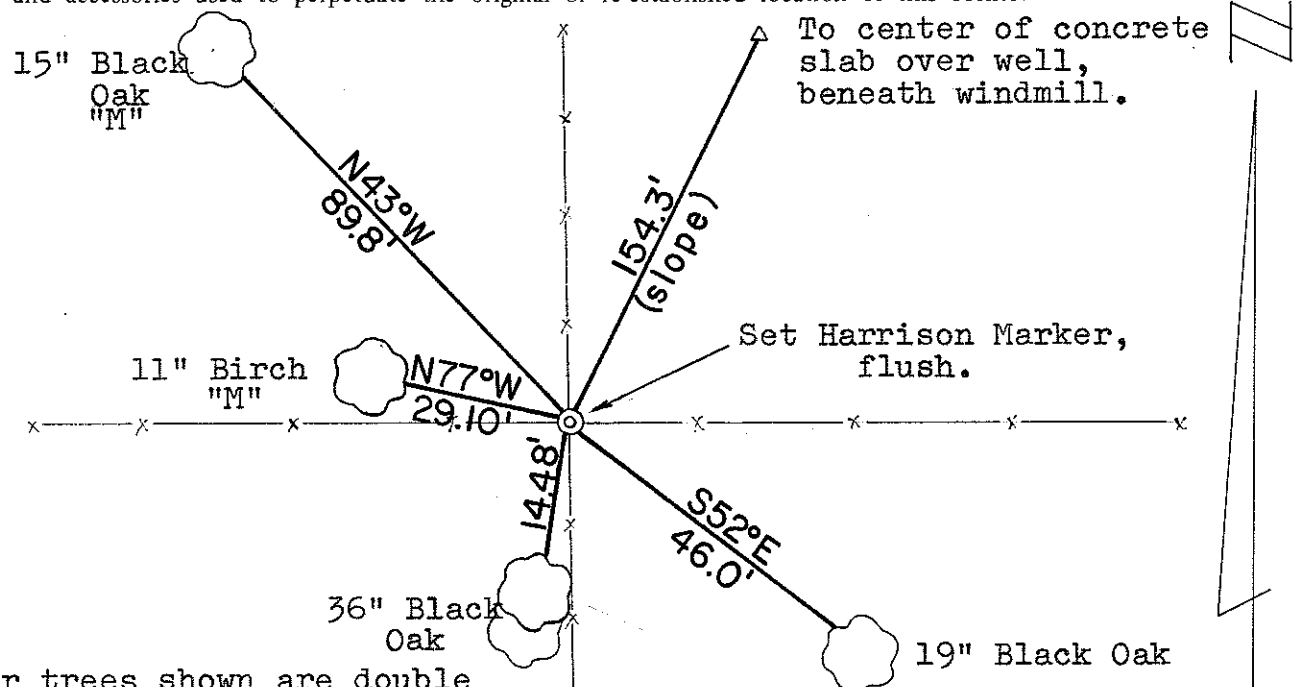
Dennis Perrigo

APPROVED: Harley A. Sime  
Monroe County Surveyor

SURVEY CONTROL ORDER

Horizontal \_\_\_\_\_  
Vertical \_\_\_\_\_

The four trees shown are double blazed; each distance is to a nail set in a hack in the side of each tree. The bearings shown are hand compass bearings.



Corner	East (X)	North (Y)	Elevation (Z)	Zone
Control Sta. Name				

~~City of Wellington~~ Town of Wellington  
County of Monroe