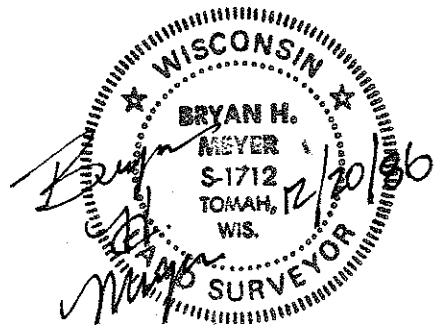


CERTIFICATE

CERTIFIED LAND CORNER

No. 95

21601302000



I, Bryan H. Meyer, do hereby certify that on the 29th day of October 1986, I found (evidence) ~~no evidence~~ of the West 1/4 corner of Section 29, T 16 N, R 1 W Fourth Principal Meridian, and I re-established said corner according to the Wisconsin Statutes as shown and described hereon.

Dated this 20th day of Dec. 1986.

Bryan H. Meyer
Deputy County Surveyor

History of corner establishment since Original Government Survey

Webster Kenyon was here in June of 1895.

Description of corner evidence found:

At the intersection of down fences from the West, North and East, I found the old corner post hole. I accepted the old corner post hole as the corner.

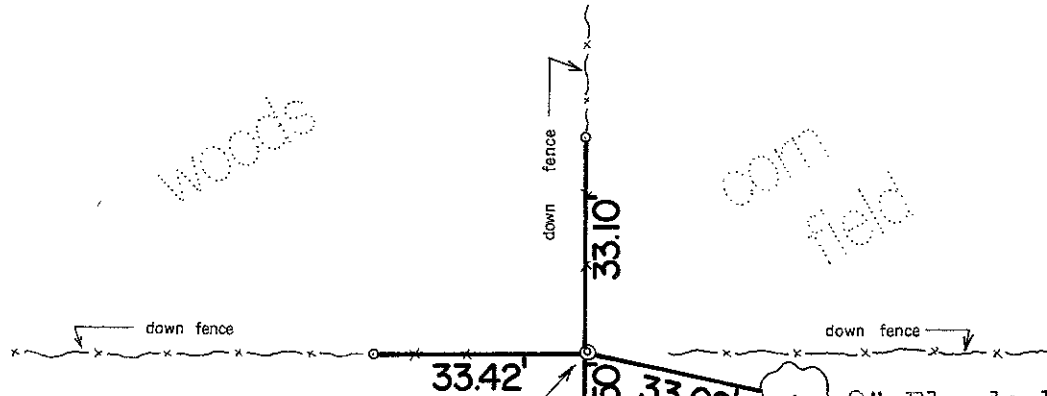
COUNTY SURVEYOR FORM NO. 1

Description of corner and witness monuments, references and accessories used to perpetuate the original or re-established location of this corner:

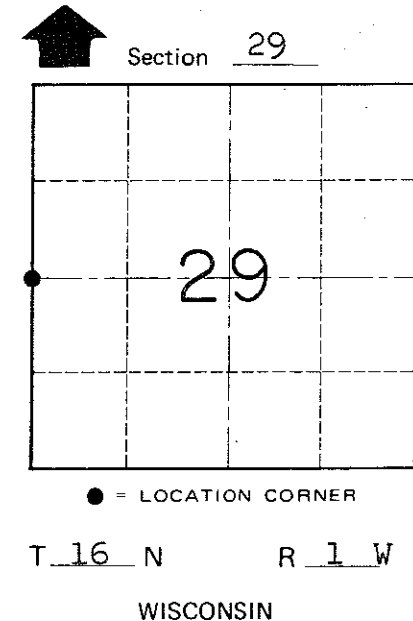
Crew: Meyer, Kenworthy
Date: October 29, 1986-2:30 P.M.
Weather: Clear, 60+/-

Witnesses to corner location:

Bryan H. Meyer
John Kenworthy



Set standard cast iron Harrison marker in the old corner post hole, up 3+/- inches. 9" Elm-double blazed; distance is to a nail set in a hack in the side.



SURVEY CONTROL ORDER

Table with 2 rows: Horizontal, Vertical

o = Set 3/4"x24" iron bar

WISCONSIN COORDINATE SYSTEM

Table with 5 columns: Corner, East (X), North (Y), Elevation (Z), Zone

City, Village or Town of Wilton

County of Monroe