

CERTIFICATE

CERTIFIED LAND CORNER

I, Garold A. Sime, do hereby certify that on the 27th day of June 1986, I found ~~(evidence)~~ (no evidence) of the S/4 corner of Section 27, T16 N, R 1W Fourth Principal Meridian, and I re-established said corner according to the Wisconsin Statutes as shown and described hereon.

Dated this 29th day of Dec. 1986.

Garold A. Sime

Deputy County Surveyor
Title

History of corner establishment since Original Government Survey

*See previous land corner record.

Description of corner evidence found:

Set this corner at a previously computed location after traversing from known survey points in Sec. 34, T16N-R1W.

Description of corner and witness monuments, references and accessories used to perpetuate the original or re-established location of this corner:

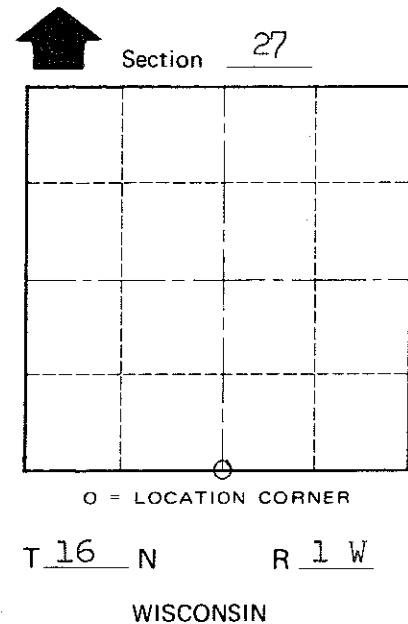
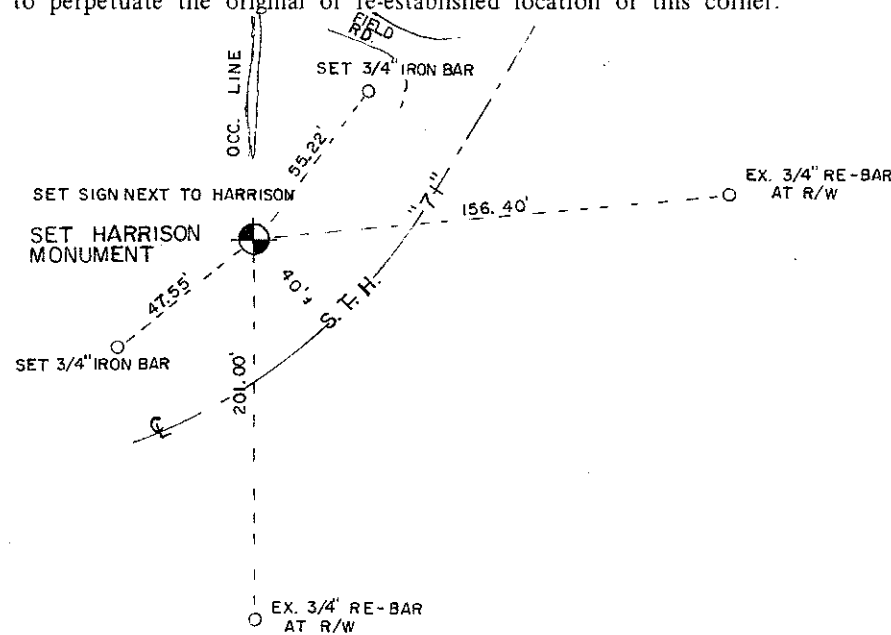
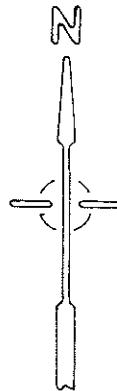
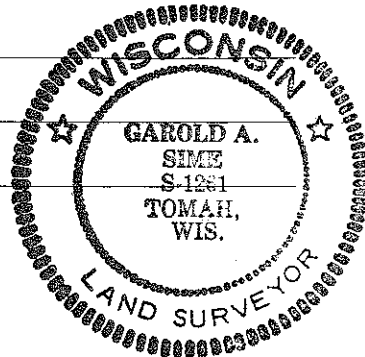
Set Harrison Monument at corner

Witnesses to corner location:

Garold A. Sime, R.L.S.

Dallas Wilhite

Joel Tralmer



SURVEY CONTROL ORDER

Horizontal _____
Vertical _____

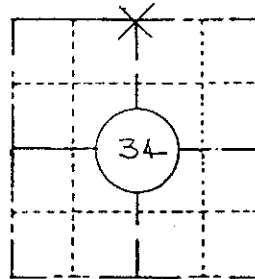
WISCONSIN COORDINATE SYSTEM

Corner	East (X)	North (Y)	Elevation (Z)	Zone
Control Sta. Name				

City, Village or Town Wilton
County of Monroe

COUNTY SURVEYOR FORM NO. 1

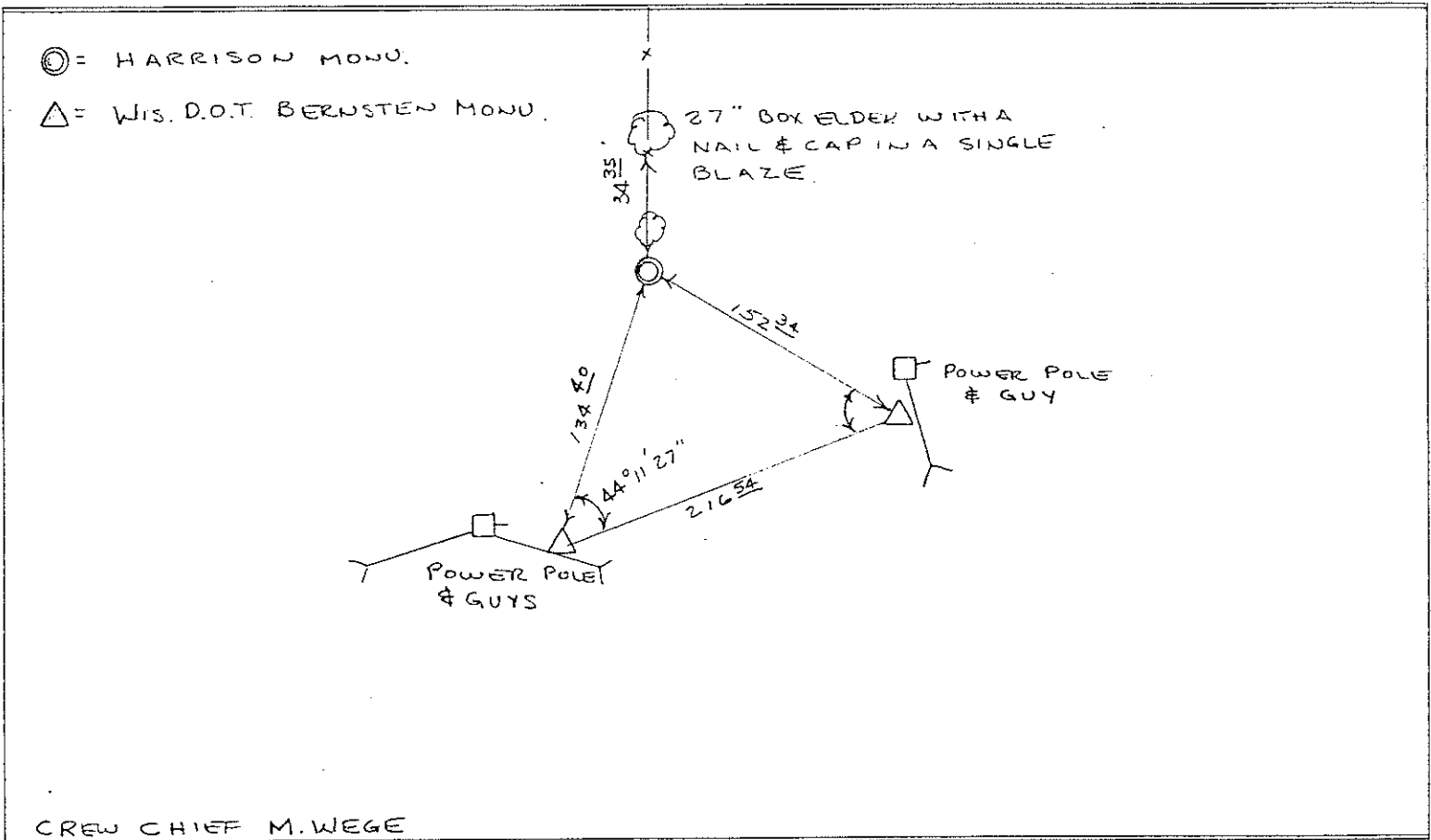
COUNTY MONROE		
TOWN WILTON		
HIGHWAY S.T.H. 71		
SECTION 34	TOWNSHIP 16 N	RANGE 1 W
TYPE OF LANDMARK HARRISON MONU. IN PLACE SET BY MONROE CO SURVEYOR 1980		



LOCATION SKETCH
 (Location of landmark indicated by "x")



This space for copy of field notes or ties to the above described landmarks



FILED UNDER PROJECT NUMBER 5546-5-72			COUNTY CLERK'S OFFICE COUNTY OF WISCONSIN } 55	
SHC DISTRICT OFFICE NUMBER # 5	CITY LA CROSSE	COUNTY LA CROSSE	DATE RECEIVED FOR RECORD	DATE COPY SENT TO COUNTY SURVEYOR
LOCATED OR ESTABLISHED BY PERPETUATED NAME <u>DERALD E. KADING</u>			SIGNATURE OF COUNTY CLERK	
TITLE <u>SURVEY COORDINATOR</u> DATE <u>5-14-84</u>				

P. 1

I, Harley A. Sime, do hereby certify that on the 26th day of September 1980, I found ~~(evidence)~~ (no evidence) of the North 1/4 corner of Section 34, T16 N, R1 W Fourth Principal Meridian, and I re-established said corner according to the Wisconsin Statutes as shown and described hereon.

History of corner establishment since Original Government Survey

No known recorded history since the original government survey.

Description of corner evidence found:

Found roll of wire ending here on old post. Accepted as best available evidence.

Dated this 26th day of Sept. 1980.

Approved: **HARLEY A. SIME**
MONROE CO. SURVEYOR

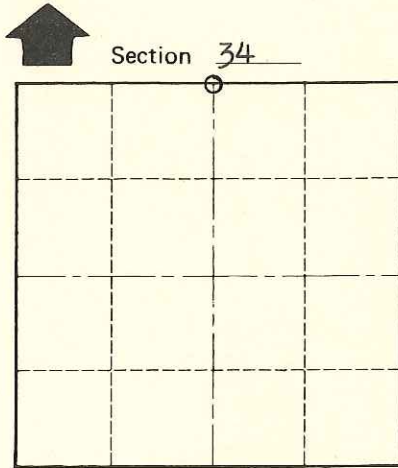
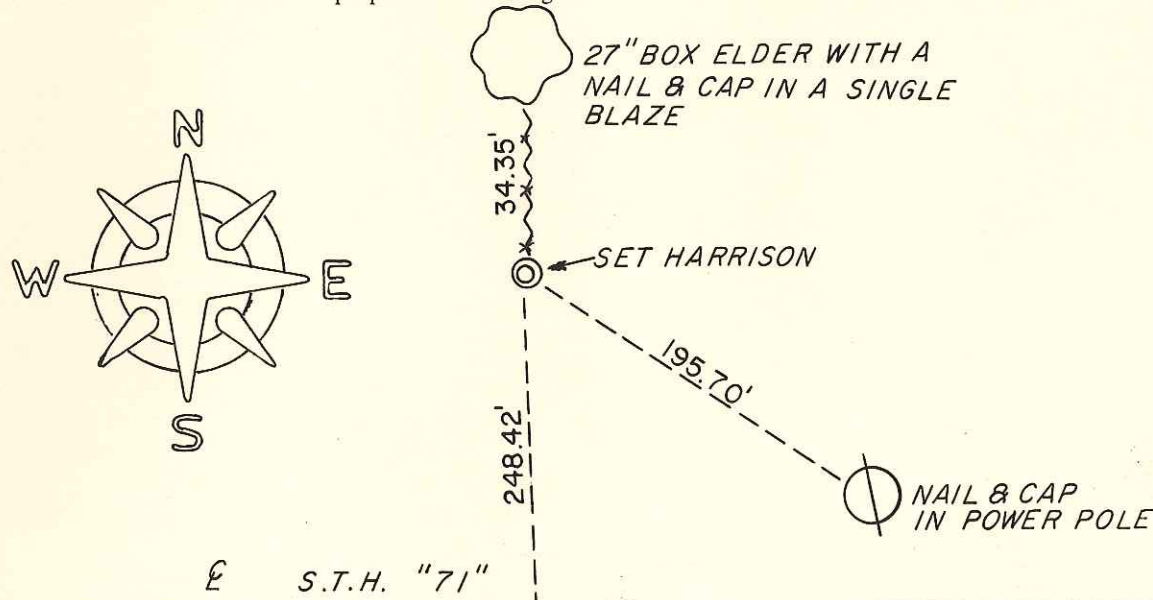
Title

COUNTY SURVEYOR FORM NO. 1

Description of corner and witness monuments, references and accessories used to perpetuate the original or re-established location of this corner:

Witnesses to corner location:

G. Dechant
B. Meyer
C. Dade



T 16 N R 1 W
WISCONSIN

SURVEY CONTROL ORDER

Horizontal	_____
Vertical	_____

WISCONSIN COORDINATE SYSTEM

Corner	East (X)	North (Y)	Elevation (Z)	Zone
Control Sta. Name				

~~City, Village or Town~~ of Wilton
County of Monroe
Wisconsin