

CERTIFICATE

CERTIFIED LAND CORNER

No. 105

**21601270000**

I, William C. Jung, do hereby certify that on the 24th day of October 1977, I found (evidence) (~~no evidence~~) of the S.W. Cor. corner of Section 26, T 16 N, R 1 W, Fourth Principal Meridian, and I re-established said corner according to the Wisconsin Statutes as shown and described hereon.

History of original corner establishment:

Hamilton La Rue was at this corner in 1897.

Dated this 11th day of Nov. 1977.

Description of corner evidence found:

Projected the South line of the SE 1/4 of Section 26 West and intersected it with the existing N-S fence at the SW Corner of Section 26. This South line of Section 26 fits the original government notes very well. The corner also falls in a location where the N-S fence appears to bend.

William C. Jung, R.L.S. 1323

Crew Chief, County Surveyor's  
Title Office

COUNTY SURVEYOR FORM NO. 1

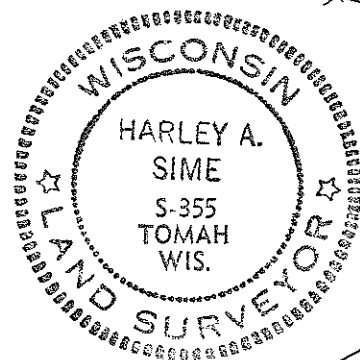
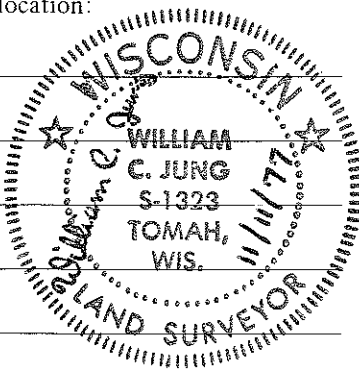
Description of corner and witness monuments, references and accessories used to perpetuate the original or re-established location of this corner:

Set a Harrison marker.

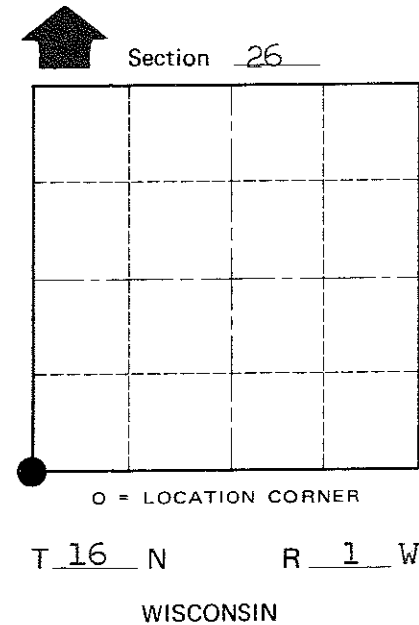
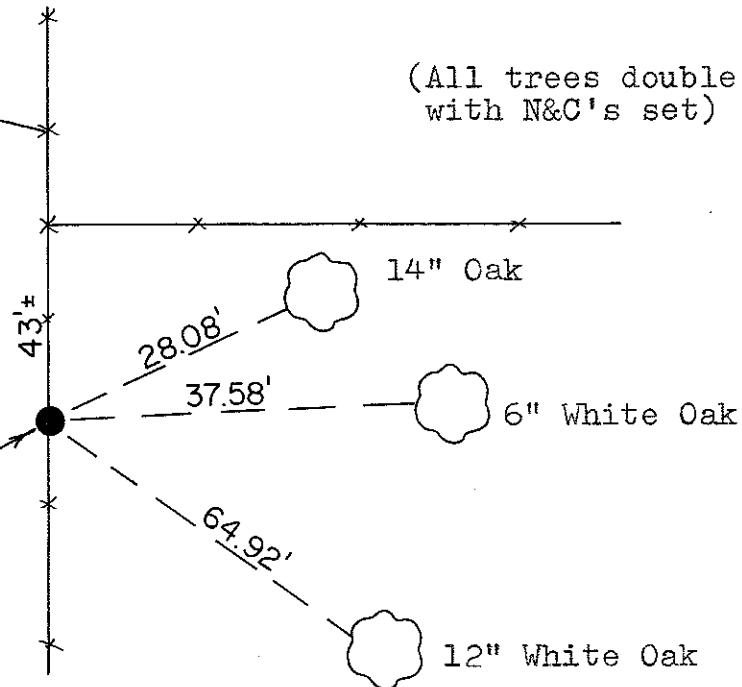
Witnesses to corner location:

W. C. Jung

G. Dechant



Set Harrison, up 2"



Approved: Harley Sime  
County Surveyor

SURVEY CONTROL ORDER

Horizontal	_____
Vertical	<u>Scaled Elev.</u>

WISCONSIN COORDINATE SYSTEM

Corner	East (X)	North (Y)	Elevation (Z)	Zone
	<u>1875067.881</u>	<u>666449.285</u>	<u>1180' ±</u>	<u>SOUTH</u>
Control Sta. Name				

City, Village or Town Wilton  
County of Monroe