

CERTIFICATE

CERTIFIED LAND CORNER

No. 98A

21601262030

I, William C. Jung, do hereby certify that on the 13th day of October 1977, I found (evidence) (no evidence) of the N.W. Cor., NE/4-SW/4 corner of Section 26, T16 N, R1 W Fourth Principal Meridian, and I re-established said corner according to the Wisconsin Statutes as shown and described hereon.

Dated this 14th day of Nov. 1977.

William C. Jung, R.L.S. 1323  
Crew Chief, County Surveyor's Office

History of original corner establishment:

None recorded except that as shown in Vol. 14 Deeds, Page 74.

Description of corner evidence found:

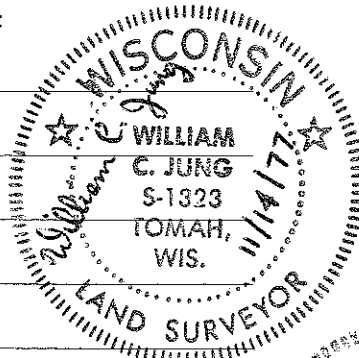
Accepted the existing N.W. fence corner of the cemetery as the correct 1/8 corner. An 1861 deed recorded in Vol. 14 Deeds, Page 74, calls for this point as the 1/8 stake. It is reasonable to assume that in 1861 the early settlers knew where the correct corner was. Chances are it had only been recently established.

Description of corner and witness monuments, references and accessories used to perpetuate the original or re-established location of this corner:

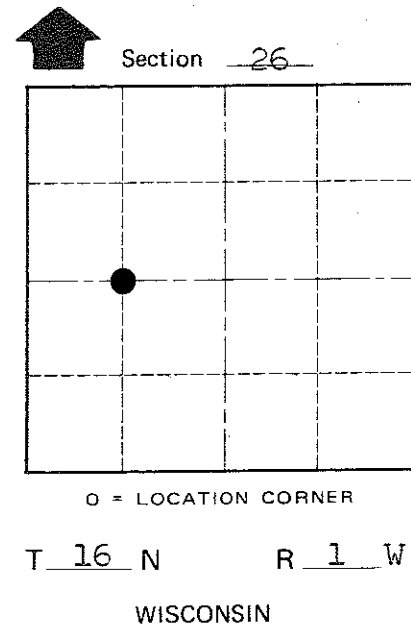
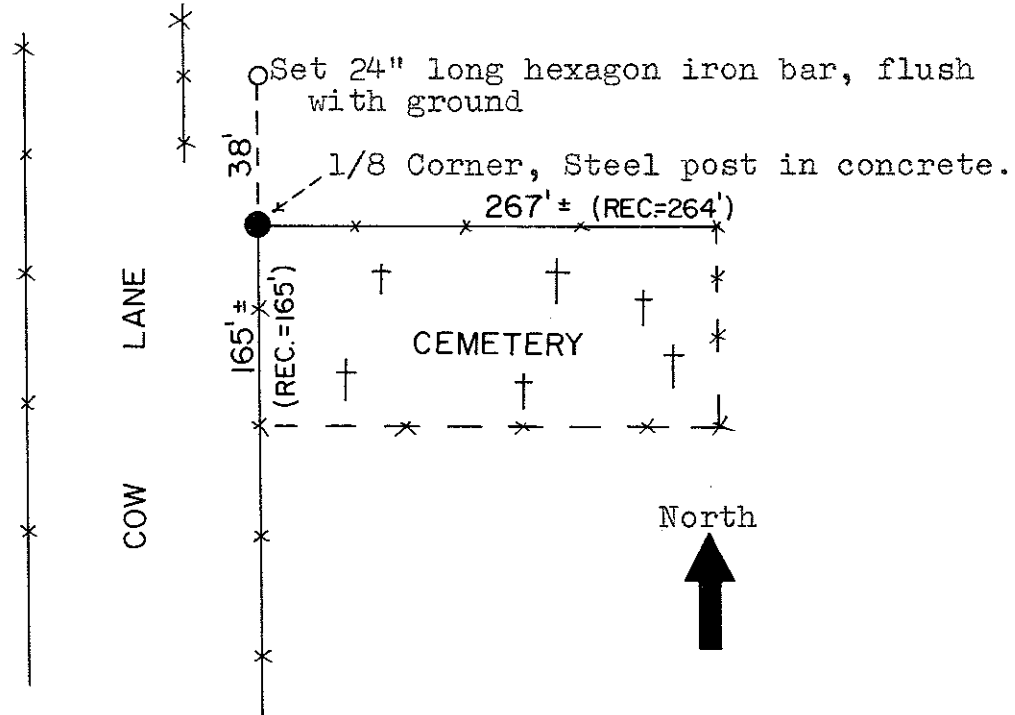
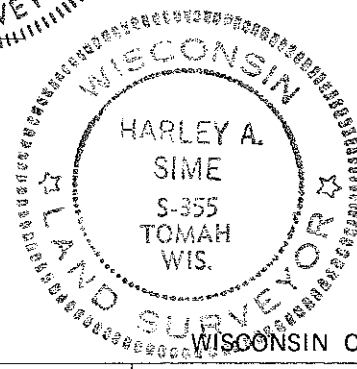
Steel post in concrete.

Witnesses to corner location:

W. C. Jung  
G. Dechant



Approved: Harley Sime  
County Surveyor



COUNTY SURVEYOR FORM NO. 1

SURVEY CONTROL ORDER

Horizontal \_\_\_\_\_  
Vertical Scaled Elev. \_\_\_\_\_

Corner	East (X)	North (Y)	Elevation (Z)	Zone
Control Sta. Name			1140' ±	

City, Village or Town Wilton  
County of Monroe