

CERTIFICATE

CERTIFIED LAND CORNER

No. 104

21601260020

I, William C. Jung, do hereby certify that on the 25th day of October 1977, I found (evidence) (no evidence) of the S 1/4 corner of Section 26, T 16 N, R 1 W, Fourth Principal Meridian, and I re-established said corner according to the Wisconsin Statutes as shown and described hereon.

History of original corner establishment:

Hamilton La Rue re-established this corner in 1897.

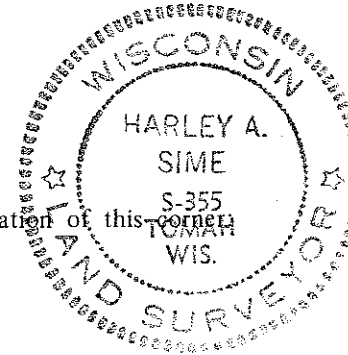
Description of corner evidence found:

The corner was set on line and equidistant between the section corners.

Dated this 11th day of Nov. 1977.

William C. Jung, R.L.S. 1323

Crew Chief, County Surveyor's
Title Office

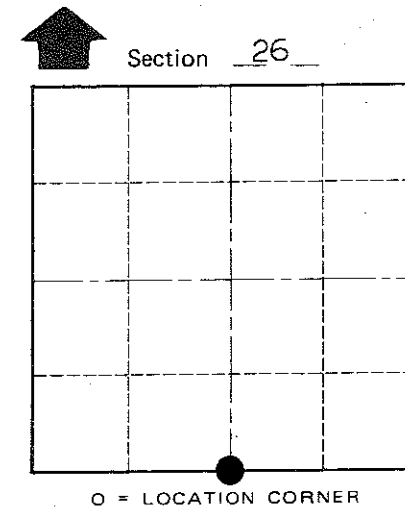
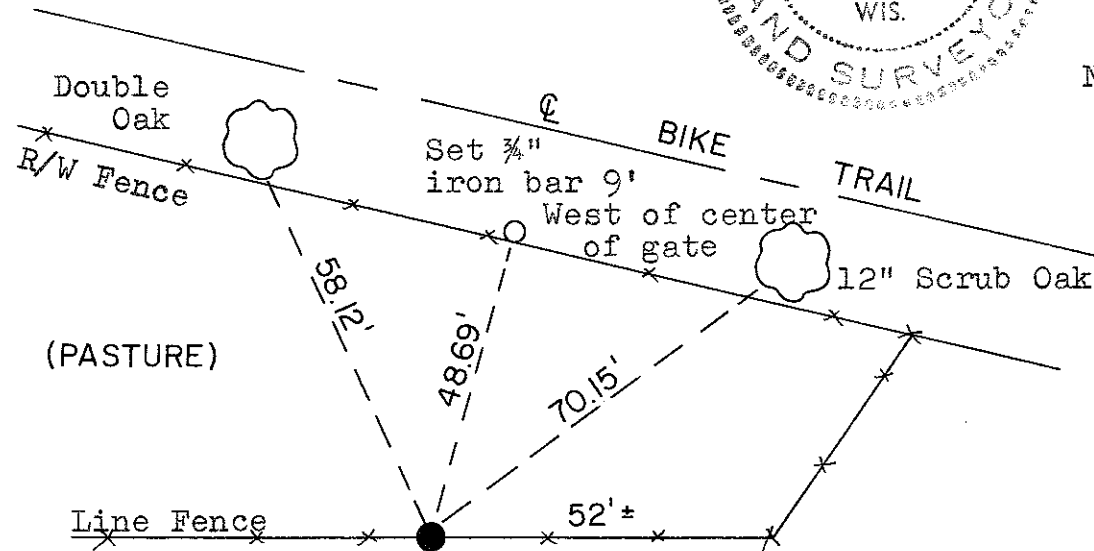
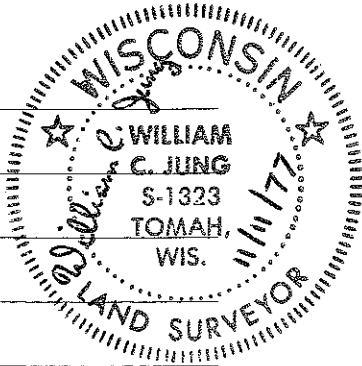


Description of corner and witness monuments, references and accessories used to perpetuate the original or re-established location of this corner:
Set a Harrison marker.

Witnesses to corner location:

W. C. Jung

G. Dechant



O = LOCATION CORNER
T 16 N R 1 W
WISCONSIN

Approved: Harley Sime
County Surveyor

(All trees double blazed and with N&C's)

COUNTY SURVEYOR FORM NO. 1

SURVEY CONTROL ORDER

Horizontal	_____
Vertical	<u>Scaled Elev.</u>

WISCONSIN COORDINATE SYSTEM

Corner	East (X)	North (Y)	Elevation (Z)	Zone
Control Sta. Name			<u>1120' ±</u>	

City, Village or Town Wilton

County of Monroe