

21601240020

I, Gary L. Dechant, do hereby certify that on the 26th day of July 1989, I found (evidence) (~~no evidence~~) of the S/4 corner of Section 24, T16 N, R 1 W Fourth Principal Meridian, and I re-established said corner according to the Wisconsin Statutes as shown and described hereon.

Dated this 27th day of July 1989.

Gary L. Dechant

Registered Land Surveyor, S-1744
Title

History of corner establishment since Original Government Survey

Fred Holden may have been here in his survey of April 1901.

Description of corner evidence found:

Found original Bearing Tree and reset corner from its recorded bearing and distance. Corner falls in remains of old fence corner.

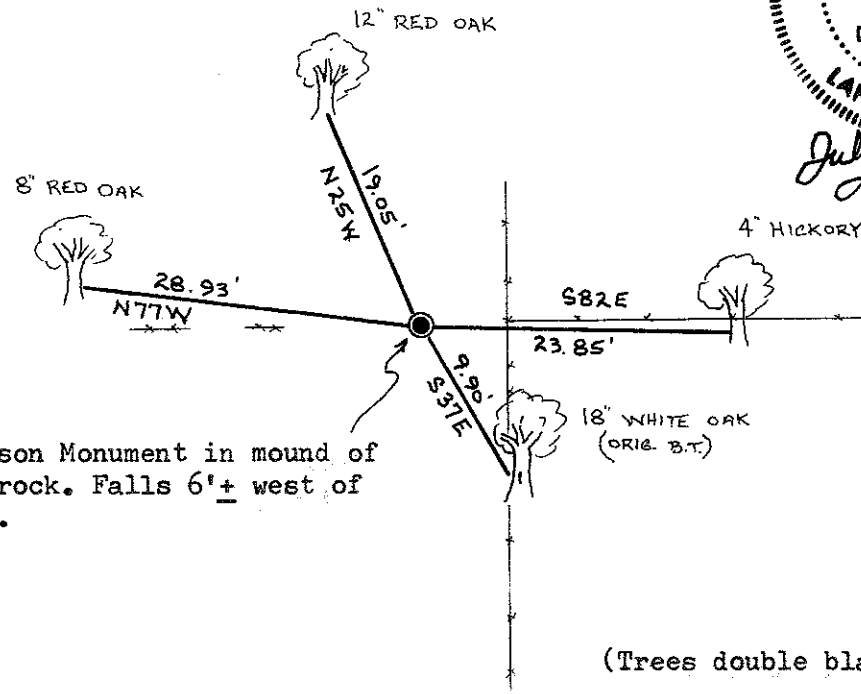
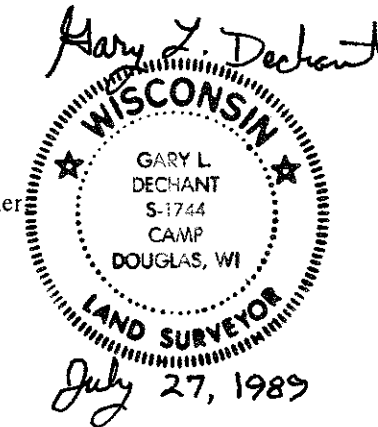
COUNTY SURVEYOR FORM NO. 1

Description of corner and witness monuments, references and accessories used to perpetuate the original or re-established location of this corner

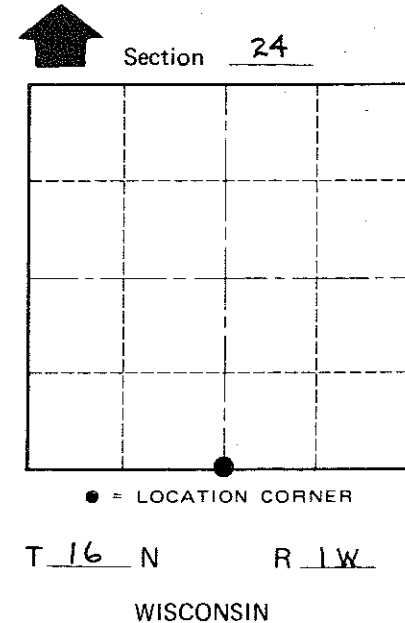
Witnesses to corner location:

Zachariah P. Dechant

Gary L. Dechant



Set Harrison Monument in mound of dirt and rock. Falls 6'+ west of new fence.



(Trees double blazed with nails set)

SURVEY CONTROL ORDER

Horizontal	_____
Vertical	_____

WISCONSIN COORDINATE SYSTEM

Corner	East (X)	North (Y)	Elevation (Z)	Zone
Control Sta. Name				

~~City, Village or~~ Town Wilton
County of Monroe