

21601232000

I, Gary L. Dechant, do hereby certify that on the 22nd day of July 1989, I found (evidence) (~~no evidence~~) of the W/4 corner of Sec. 24, T16 N, R1 W Fourth Principal Meridian, and I re-established said corner according to the Wisconsin Statutes as shown and described hereon.

History of corner establishment since Original Government Survey

No known recorded history since the original government survey.

Description of corner evidence found:

Set corner on line with remains of east-west fence and on line with the NW corner of Section 24 and the NW corner of the SW¹/₄-NW¹/₄ of Section 24. This location also causes the the NW corner of the SW¹/₄-NW¹/₄ to fit within 2'± north south of its occupied corner. This also causes the West line of the NW¹/₄ to fall on the easterly side of a "Rock Bluff" as called for in the Original Government Notes. It is noted that the distance to said "Rock Bluff" is in error, but line does fall on the east side of it. This does not fit the presently occupied forty corner to the east at all, but it was brought to my attention that said forty corner to the east has been moved. However, this W¹/₄ corner location does fit the occupied east line of Vol. 80 D., P. 22 extremely well.

Dated this 27th day of July 1989.

Gary L. Dechant

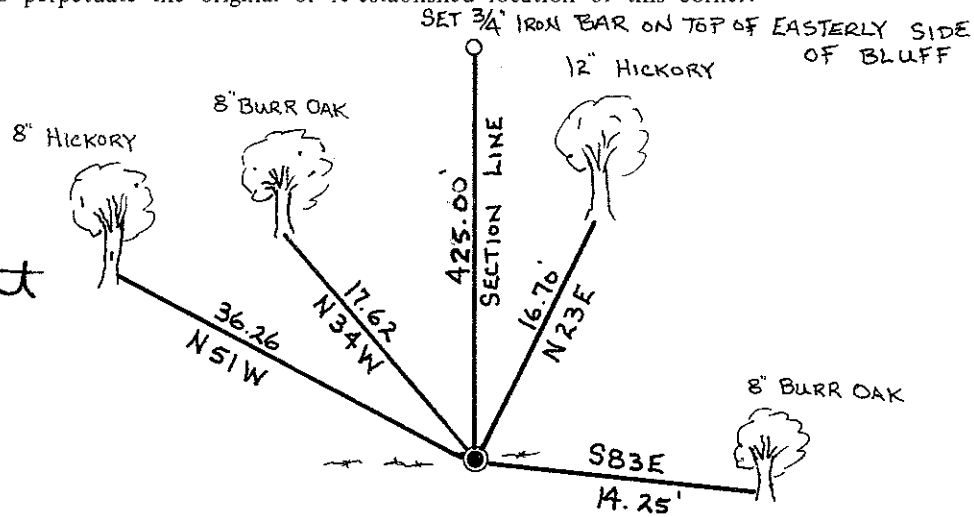
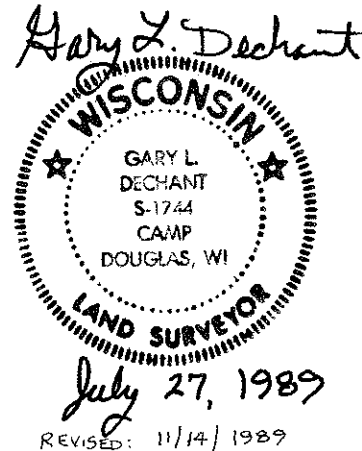
Registered Land Surveyor, S-1744
Title

Description of corner and witness monuments, references and accessories used to perpetuate the original or re-established location of this corner:

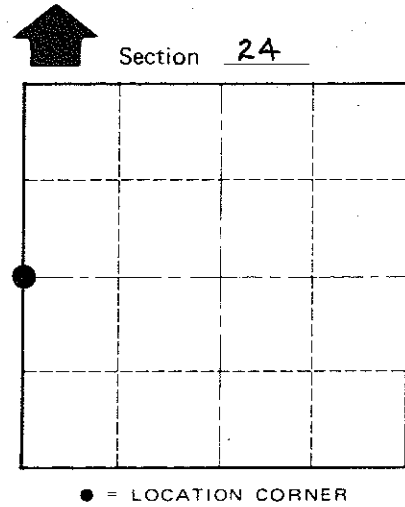
Witnesses to corner location:

Lawrence M. Dechant

Gary L. Dechant



Set Harrison Monument, set survey sign 1'± north. Shallow swale 120'± West and shallow swale 60'± East.



(Trees double blazed with nails set)

COUNTY SURVEYOR FORM NO. 1

SURVEY CONTROL ORDER

Horizontal _____
Vertical _____

WISCONSIN COORDINATE SYSTEM

Corner	East (X)	North (Y)	Elevation (Z)	Zone
Control Sta. Name				

~~City Village or~~ Town Wilton

County of Monroe