

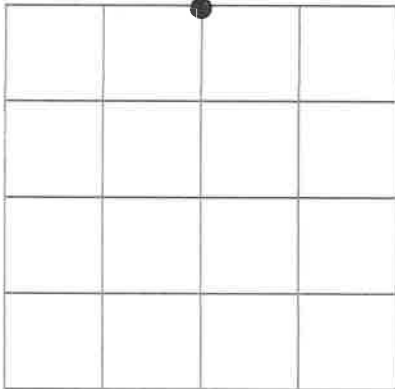
U.S. Public Land Survey Monument Record

Corner ID: N1/4 Sec. 26, T16N-R1W

21601230020

Type of Monument: No monument, falls on steep excavated bank

Sec. 26, T16N-R1W



Gary L. Dechant

April 6, 2018

Field Date: March 28, 2018

Witnesses: Zachariah P. Dechant
Gary L. Dechant

I do hereby certify that I have complied with AE 7 of the Wisconsin Administrative Code to the best of my knowledge and belief.

Gary L. Dechant 4-6-2018

Basis For Monument Location:

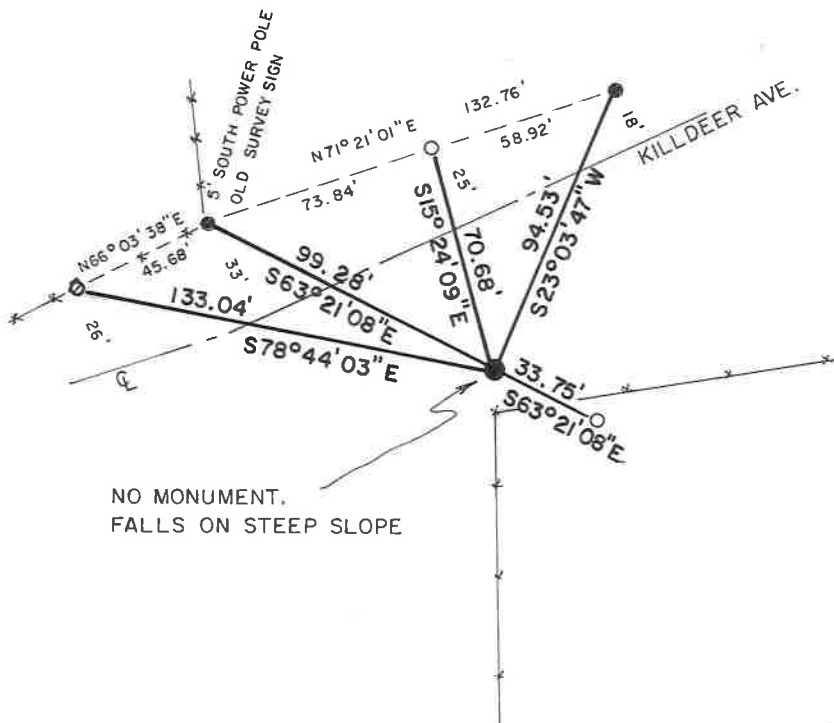
(Show info such as history, evidence, testimony, found or method of relocation)

Original Government Surveyor was Sylvester Sibley in March 1833.

W. Jung reestablished this corner November 9, 1977 at intersection of fence corner. Actual corner fell on side of steep cliff, so set an iron bar as witness monument 16.5 feet west on section line.

Jung's witness monument destroyed from excavation. Recomputed corner from existing reference marker's shown on CSR No. 2471 and from recorded distance to SW corner of Section 23. Fits previous work exceptionally well.

- =Existing 3/4" round iron bar (See CSR 2471)
- =Set 1"x24" square iron bar, down 6", 25' north center Killdeer Ave
- ⊙ =Existing old ground rod north side of cut off power pole with old survey sign, 26' north center Killdeer Ave.



NO MONUMENT,
FALLS ON STEEP SLOPE

I, William C. Jung, do hereby certify that on the 25th day of October 1977, I found (evidence) (~~no evidence~~) of the N 1/4 corner of Section 26, T 16 N, R 1 W, Fourth Principal Meridian, and I re-established said corner according to the Wisconsin Statutes as shown and described hereon.

Dated this 9th day of Nov. 1977.

William C. Jung, R.L.S. 1323

Crew Chief, County Surveyor's
Office

History of original corner establishment:

No recorded history since the original government survey.

Description of corner evidence found:

Accepted the intersection of the Easterly and Southerly line fences as the best available evidence. Fits the original government notes and existing field evidence very well. The actual corner falls on the side of a small cliff, so an iron bar was set as a witness corner.

Note: The actual corner when computing should be put on line with the 1/4" iron bar and the Harrison marker at the N.W. corner of Section 26.

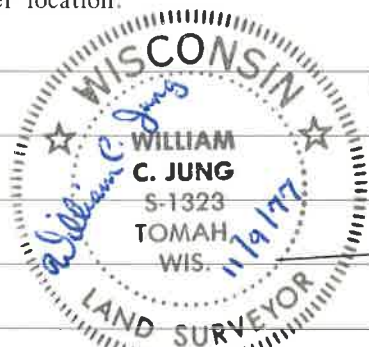
Description of corner and witness monuments, references and accessories used to perpetuate the original or re-established location of this corner:

Set a 1/4" iron bar 16.5 feet West of the actual corner.

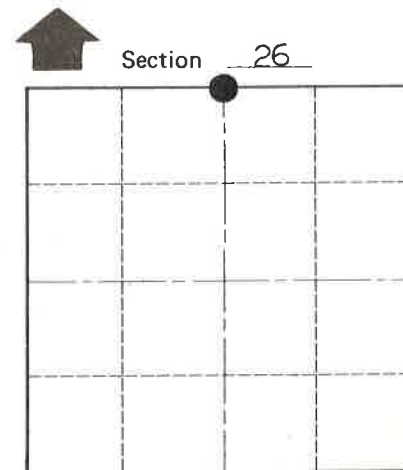
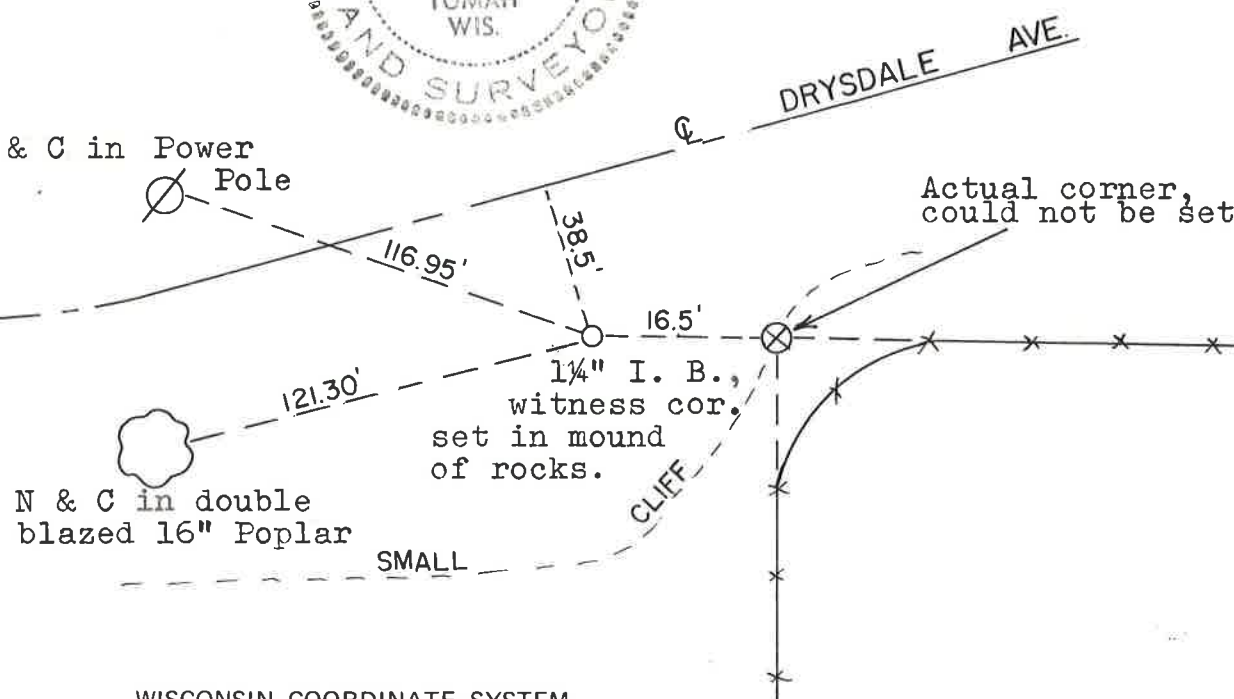
Witnesses to corner location:

W. C. Jung

G. Dechant



Approved: Harley Sime
County Surveyor



O = LOCATION CORNER

T 16 N R 1 W

WISCONSIN

COUNTY SURVEYOR FORM NO. 1

SURVEY CONTROL ORDER

Horizontal
Vertical Scaled Elev.

WISCONSIN COORDINATE SYSTEM

Corner	East (X)	North (Y)	Elevation (Z)	Zone
Corner	1877663.170	671760.504	1100 +	SOUTH
Control Sta. Name				

City, Village or Town Wilton
County of Monroe