

21601230000

I, Gary L. Dechant, do hereby certify that on the 22nd day of July 19 89, I found (evidence) (~~no evidence~~) of the SW corner of Section 24, T 16 N, R 1 W Fourth Principal Meridian, and I re-established said corner according to the Wisconsin Statutes as shown and described hereon.

Dated this 27th day of July 19 89.

Gary L. Dechant

Registered Land Surveyor, S-1744
Title

History of corner establishment since Original Government Survey

Fred Holden may have been here in his survey of April 1901.

Description of corner evidence found:

Set corner in east-west fence line at a prorated distance between the $\frac{3}{4}$ corner of Section 24 and the $\frac{3}{4}$ corner of Section 23. I did not accept the existing fence corner as it would cause great shortage half mile to the east and great excess to the west, nor would it agree with Fred Holden's method of establishing quarter corners in his survey of Section 25. This corner location does cause a severe bend at the $\frac{1}{4}$ corner of Section 24, which could be due to the rough terrain, but accepting the fence corner, would then cause a severe bend at the $\frac{1}{4}$ corner of Section 26, thus I did not put much weight on straight lines. It is possible the fence corner is to the east for easier fencing to avoid going north over a large rock outcrop. Also, my east-west location best fits long occupied corners to the west (forty corner and twenty corner west) and the north-south location fits the occupied SW corner NW $\frac{1}{4}$ -NW $\frac{1}{4}$ Section 26 within 8'±.

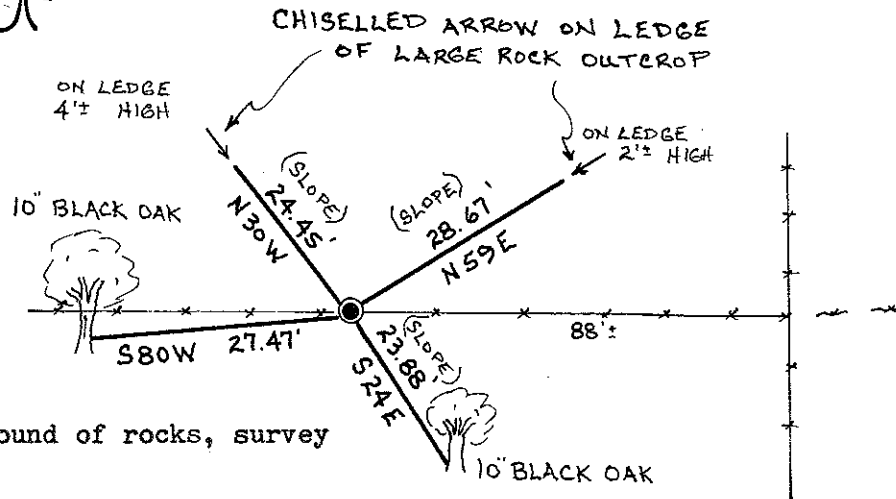
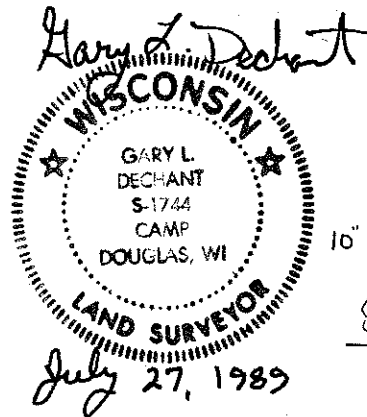
Description of corner and witness monuments, references and accessories used to perpetuate the original or re-established location of this corner:

Witnesses to corner location:

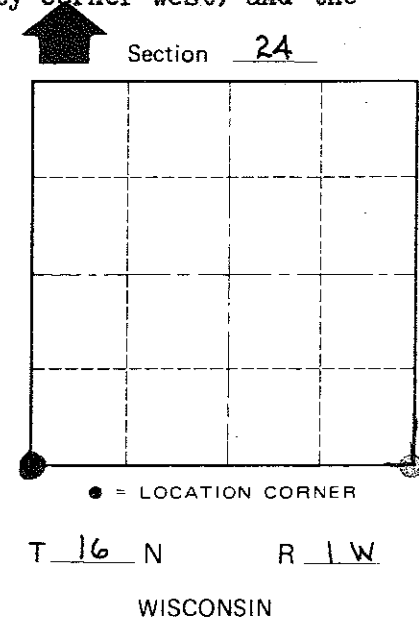
Lawrence M. Dechant

Gary L. Dechant

COUNTY SURVEYOR FORM NO. 1



Set Harrison in mound of rocks, survey sign 2'± north.



SURVEY CONTROL ORDER

Horizontal _____
Vertical _____

WISCONSIN COORDINATE SYSTEM

Corner	East (X)	North (Y)	Elevation (Z)	Zone
Control Sta. Name				

City, Village or Town WILTON

County of MONROE