

# 78

**U.S. PUBLIC LAND CORNER  
MAINTENANCE**

**Corner ID : E1/4 Sec. 22, T16N-R1W  
21601222000**

<u>DATE</u>	<u>CREW</u>	<u>MONUMENT TYPE</u> -----
March 28, 2018	Zachariah P.Dechant Gary L. Dechant	Existing 1/4" iron bar destroyed/bent over. 5' west of center line STH "131". Did not remove because of frost and busy highway. All Jung's and Kading's ties gone. Reset with nail from one remaining tie of G. Sime's and from existing survey points of mine from previous work in Section 23.

References:

	<u>Bearing</u>	<u>Distance</u>
1) Existing 3/4" round iron bar (Sime's) 40' west of center STH "131"	NW	44.59'
2) Set 1"x24" sq. iron bar on slope, 2' north of fence, 14' west of 6" Cherry	East	137.74'
3) Set 1"x24" square iron bar, down 2", 29' east center STH "131"	SE	46.68'
4) Set 1"x24" square iron bar, toe of slope of road bank, down 12"	West	42.44'
5) Existing survey point, Railroad spike, 28' west center STH "131" down 6"	West	22.84'

**Corner and reference markers set on straight lines.**



I, Garold A. Sime, do hereby certify that on the 13<sup>th</sup> day of June 19 86, I found ~~evidence~~ (no evidence) of the E/4 corner of Sec. 22, T 16 N, R 1W Fourth Principal Meridian, and I re-established said corner according to the Wisconsin Statutes as shown and described hereon.

Dated this 29<sup>th</sup> day of Dec 19 86.

Garold A. Sime  
Deputy County Surveyor  
Title

History of corner establishment since Original Government Survey

\*See previous land corner record

Description of corner evidence found:

Set this corner at a previously computed location after traversing between known points.

See Reverse Side For Maintenance

COUNTY SURVEYOR FORM NO. 1

Description of corner and witness monuments, references and accessories used to perpetuate the original or re-established location of this corner:

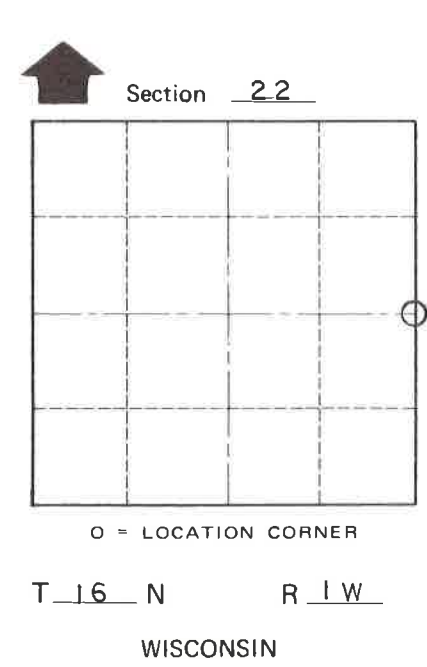
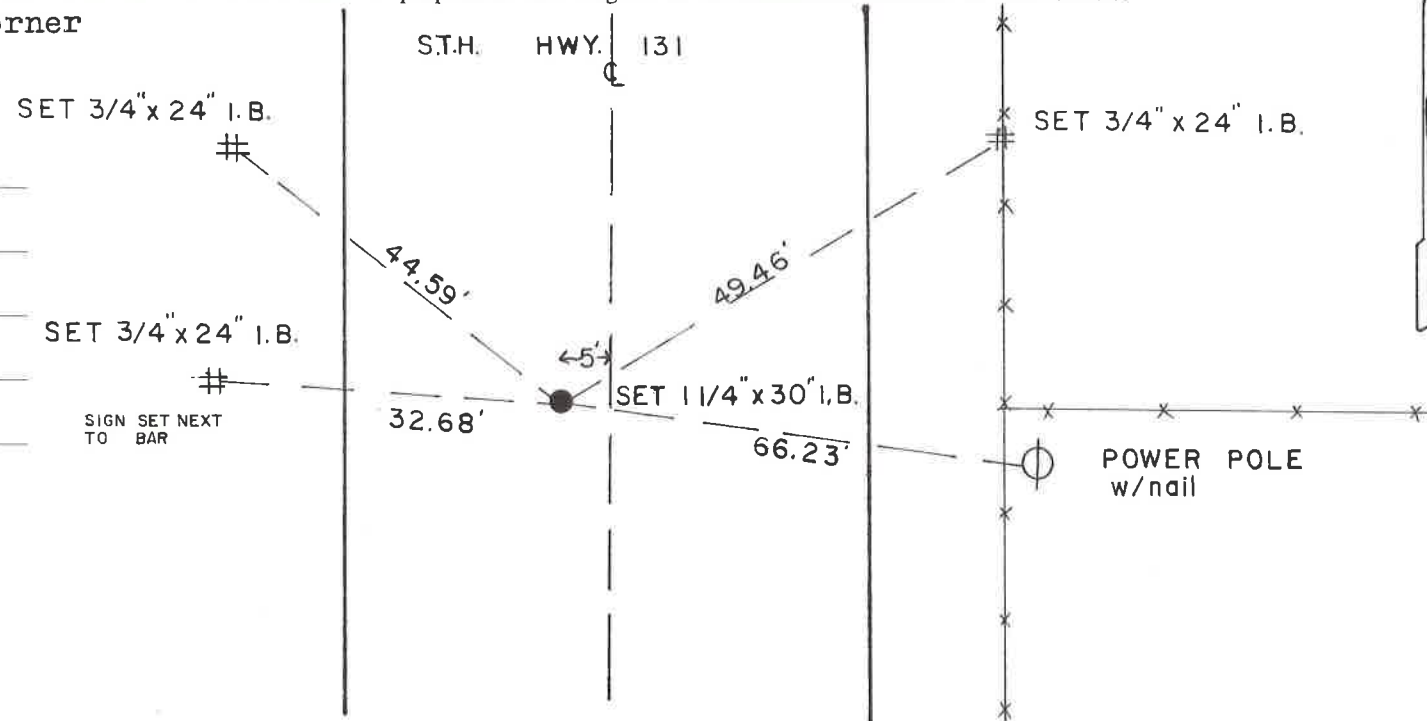
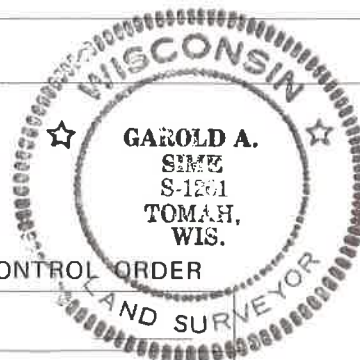
Set 1 1/4" round iron bar at corner

Witnesses to corner location:

Garold A. Sime, R.L.S.

Dallas Wilhite

Joel Tralmer

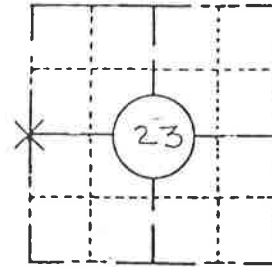


SURVEY CONTROL ORDER		WISCONSIN COORDINATE SYSTEM			
Horizontal	Vertical	East (X)	North (Y)	Elevation (Z)	Zone
Corner					
Control Sta. Name					

City, Village or Town Wilton  
County of Monroe

Approved by  
 County Surveyor

COUNTY MONROE		
TOWN WILTON		
HIGHWAY S.T.H. 131		
SECTION 23	TOWNSHIP 16 N	RANGE 1 W
TYPE OF LANDMARK 1 1/4" IRON BAR IN PLACE SET BY MONROE CO. SURVEYOR 1977		

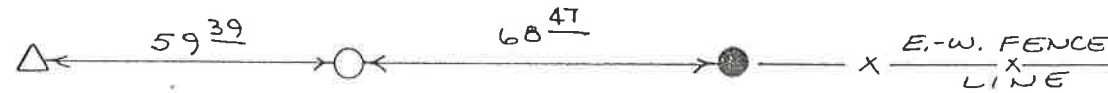


LOCATION SKETCH  
 (Location of landmark indicated by "x")



This space for copy of field notes or ties to the above described landmarks

- = 1 1/4" IRON BAR 30" LONG
- = 3/4" IRON BAR 24" LONG
- △ = WIS. D.O.T. BERNSTEIN MONU.  
SET ALONG NEW S.T.H. 131 R/W.



See Reverse Side  
 For Maintenance

21601222000

CREW CHIEF M. WEGE.

FILED UNDER PROJECT NUMBER 5130-5-72			COUNTY CLERK'S OFFICE COUNTY OF WISCONSIN } SS	
SHC DISTRICT OFFICE NUMBER #5	CITY LACROSSE	COUNTY LACROSSE	DATE RECEIVED FOR RECORD	DATE COPY SENT TO COUNTY SURVEYOR
LOCATED OR ESTABLISHED BY PERPETUATED NAME DERALD E. KADING			SIGNATURE OF COUNTY CLERK	
TITLE SURVEY COORDINATOR DATE 5-17-84				

CERTIFICATE

CERTIFIED LAND CORNER

21601222000

No. 78

Pg. 1

I, William C. Jung, do hereby certify that on the 28th day of October 1977, I found (evidence) (no evidence) of the West 1/4 corner of Section 23, T 16 N, R 1 W, Fourth Principal Meridian, and I re-established said corner according to the Wisconsin Statutes as shown and described hereon.

History of original corner establishment:

No recorded history since the original government survey.

See Reverse Side For Maintenance

Description of corner evidence found:

This corner caused no small amount of concern to this surveyor. I set the corner on line with the section corners North and South, and on line with with an old fence to the East and with evidence of an old established line going West to the occupied Center 1/4 of Section 22. The result of this is that the distance North to the N.W. corner of Section 23 is (1) chain plus long, but the corner as set fits the greater bulk of field evidence found along the two miles measured between 15|14 and 27|26. 22|23 34|35

Dated this 3rd day of Nov. 1977.

William C. Jung, R.L.S. 1323

Crew Chief, County Surveyor's Title Office

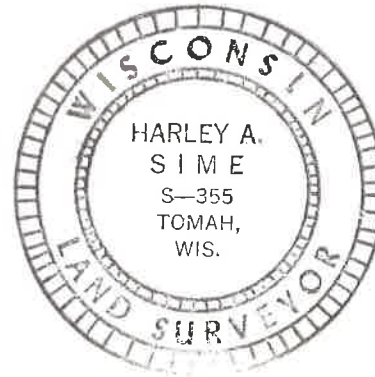
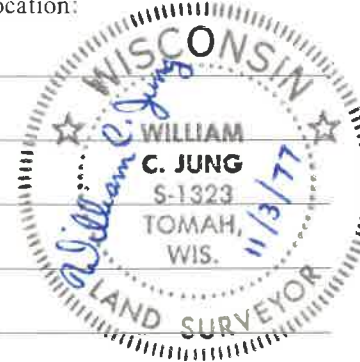
Description of corner and witness monuments, references and accessories used to perpetuate the original or re-established location of this corner:

Set a 1 1/4"x30" iron bar, down 1", 4 ft. East of the centerline of S.T.H. "131".

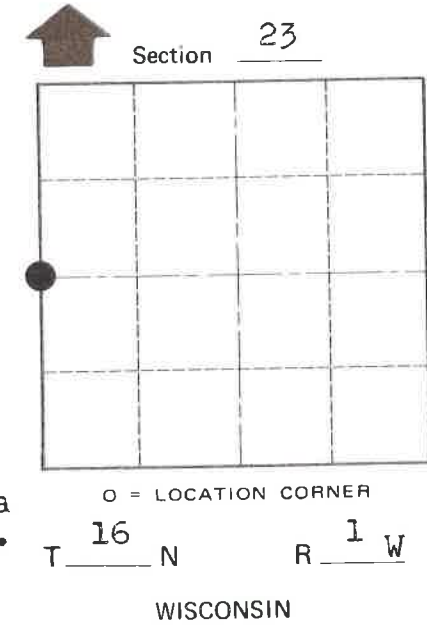
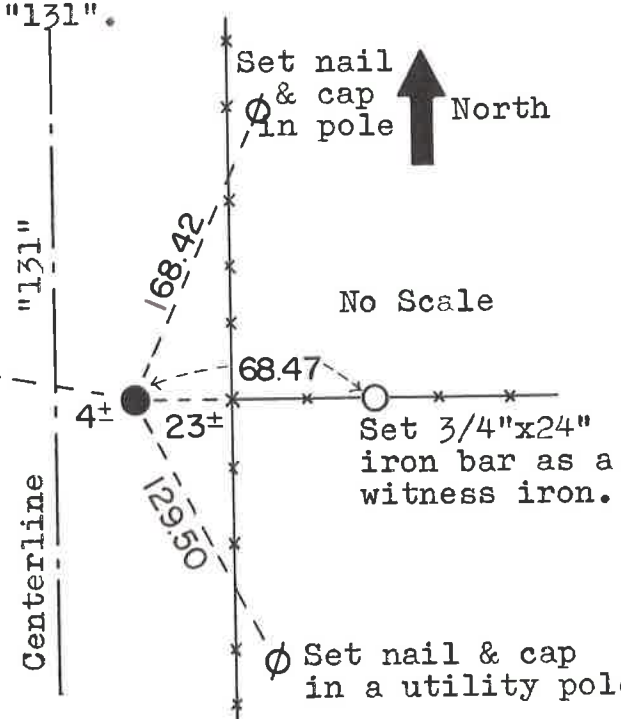
Witnesses to corner location:

W. C. Jung

G. Dechant



Set nail & cap in pole. phi - 37.8



SURVEY CONTROL ORDER

Approved: Harley Sime County Surveyor

Table with 2 rows: Horizontal, Vertical Scaled Elev.

WISCONSIN COORDINATE SYSTEM

Table with 5 columns: Corner, East (X), North (Y), Elevation (Z), Zone. Values: 1875045.137, 674338.635, 1050+, SOUTH.

City, Village or Town Wilton

County of Monroe

COUNTY SURVEYOR FORM NO. 1