

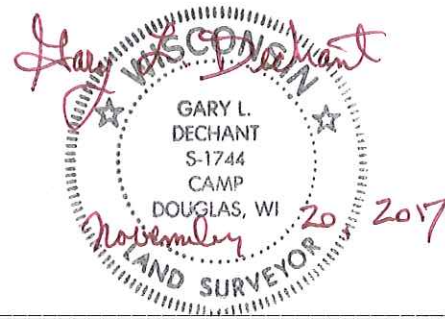
#75

**U.S. PUBLIC LAND CORNER
MAINTENANCE**

**Corner ID : E1/4 Sec. 19, T16N-R1W
21601192000**

<u>DATE</u>	<u>CREW</u>	<u>MONUMENT TYPE -----</u>
October 25, 2017	Zachariah P.Dechant Gary L. Dechant	Existing Harrison intact at fence corner, 105 east of Kettle Road Found up 12", lowered flush with ground. Set sign 1' west.

<u>References:</u>	<u>Bearing</u>	<u>Distance</u>
1) Set 3/4"x24"round iron bar, down 4", 3' east of fence	N3E	19.53'
2) Set 3/4"x24" round iron bar, down 4"	S25E	40.28 '
3) Set 3/4"x24" round iron bar, down 4"	S23W	23.66'
4) Set 3/4"x24" round iron bar, down 4", 10' west of fence	N25W	27.34'



I, Bryan H. Meyer, do hereby certify that on the 29th day of October 19 86, I found (evidence) ~~no evidence~~ of the West 1/4 corner of Section 20, T 16 N, R 1 W Fourth Principal Meridian, and I re-established said corner according to the Wisconsin Statutes as shown and described hereon.

Dated this 22nd day of Dec. 19 86.

Bryan H. Meyer
Deputy County Surveyor
Title

History of corner establishment since Original Government Survey

No recorded history.

Description of corner evidence found:

I accepted the three-way fence corner as the best available evidence.



See Reverse Side For Maintenance

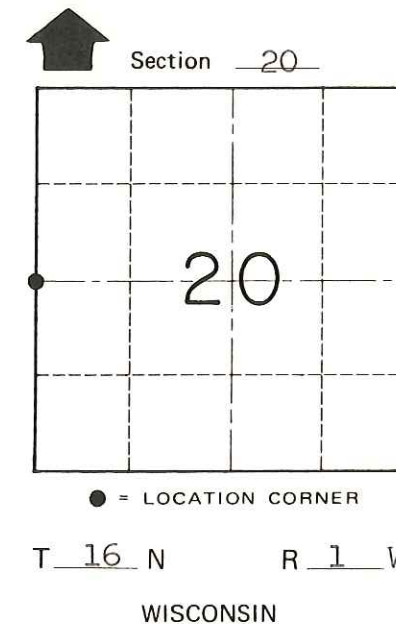
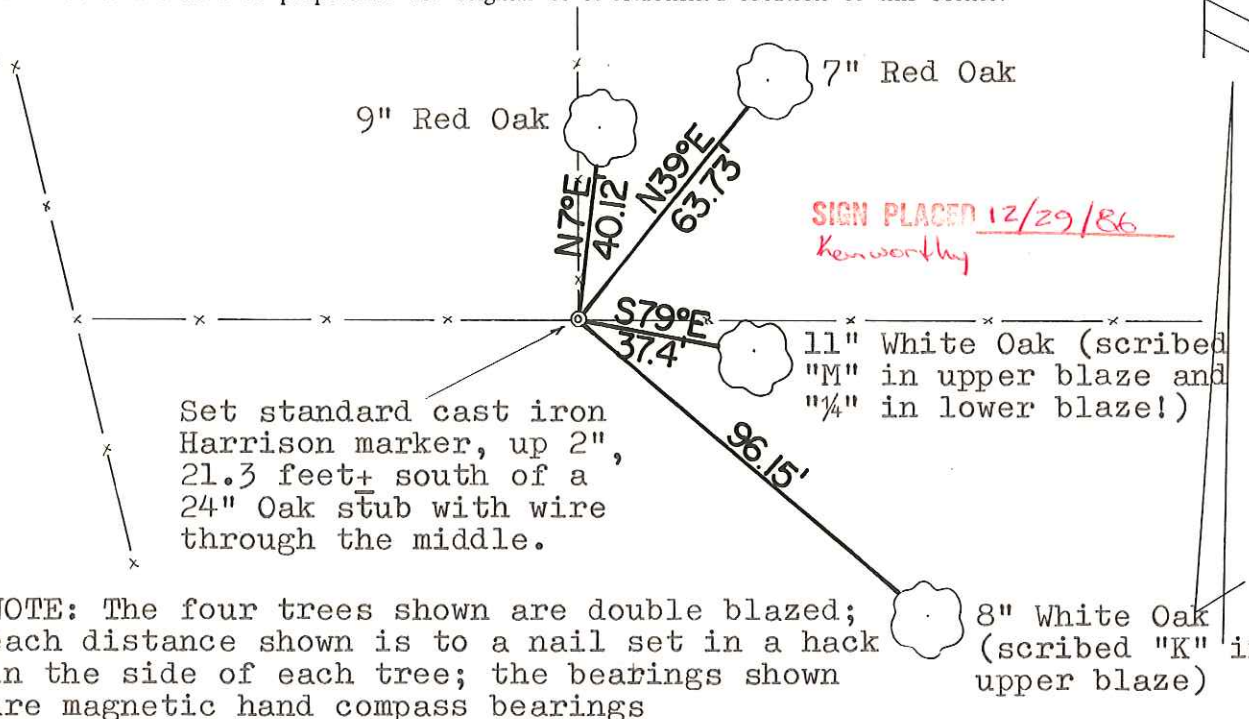
COUNTY SURVEYOR FORM NO. 1

Description of corner and witness monuments, references and accessories used to perpetuate the original or re-established location of this corner:

Crew: Meyer, Kenworthy
Date: October 29, 1986 - 4:00 P.M.
Weather: Clear, 55°±
Witnesses to corner location:

Bryan Meyer

John Kenworthy



NOTE: The four trees shown are double blazed; each distance shown is to a nail set in a hack in the side of each tree; the bearings shown are magnetic hand compass bearings

SURVEY CONTROL ORDER

Horizontal	_____
Vertical	_____

WISCONSIN COORDINATE SYSTEM

Corner	East (X)	North (Y)	Elevation (Z)	Zone
Control Sta. Name				

City, Village or Town of Wilton
County of Monroe