

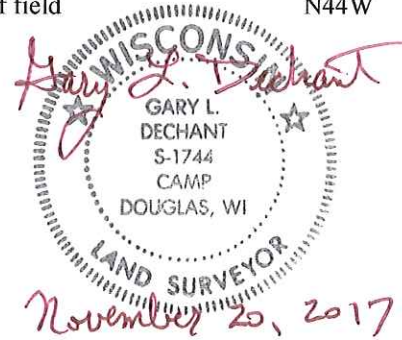
#70

**U.S. PUBLIC LAND CORNER  
MAINTENANCE**

**Corner ID : S1/4 Sec. 17, T16N-R1W  
21601170020**

<u>DATE</u>	<u>CREW</u>	<u>MONUMENT TYPE -----</u>
October 25, 2017	Zachariah P.Dechant Gary L. Dechant	Existing Harrison intact 2' north of east-west fence. 43' west of fence corner. Set sign 1' west.

<u>References:</u>	<u>Bearing</u>	<u>Distance</u>
1) Set 3/4"x24"round iron bar, down 4" placed 12" sandstone over bar	N66E	24.43'
2) Set 3/4"x24" iron pipe, down 4"	S18E	12.52'
3) Set 3/4"x24" capped iron pipe down 4", 8' NE of 16" Black Oak	S45W	21.22'
4) Set 3/4"x24" iron pipe, down 10" at south edge of field	N44W	14.54'



I, Garold A. Sime, do hereby certify that on the 31 st day of October 1985, I found ~~(evidence)~~ (no evidence) of the S 1/4 corner of Section 17, T 16 N, R 1 W Fourth Principal Meridian, and I re-established said corner according to the Wisconsin Statutes as shown and described hereon.

Dated this 10 day of Feb. 1986.

Garold A. Sime

Deputy County Surveyor  
Title

History of corner establishment since Original Government Survey

H. A. Sime was near this corner in June of 1962. Peddersen Engineering and surveying was near this corner in the early 1980's

Description of corner evidence found:

I set this corner on line and equidistant between the Southeast and the Southwest corners of Section 17.

**See Reverse Side For Maintenance**

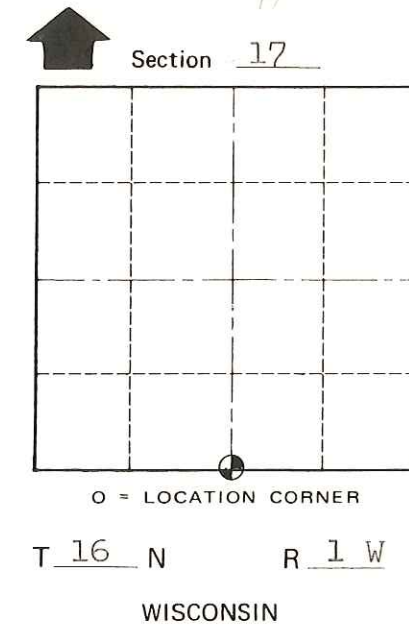
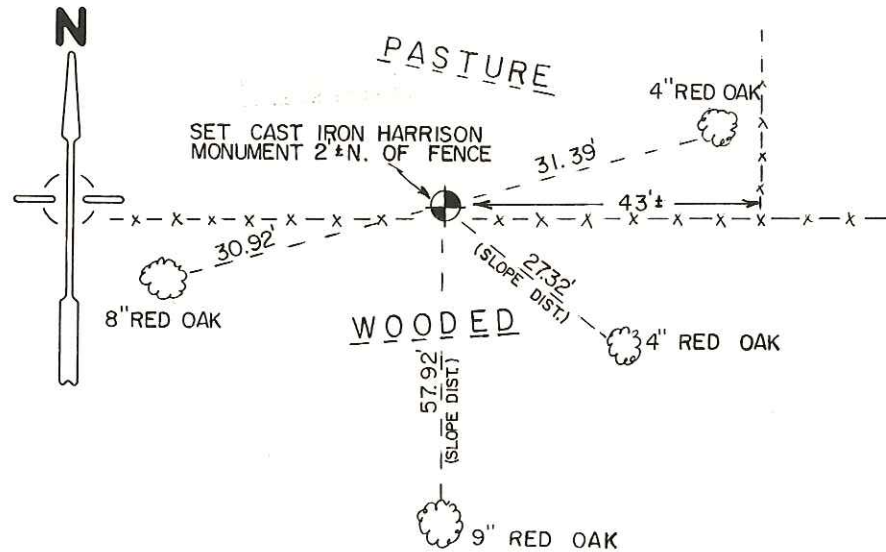
COUNTY SURVEYOR FORM NO. 1

Description of corner and witness monuments, references and accessories used to perpetuate the original or re-established location of this corner:  
Set cast iron Harrison Monument at this corner location.

Witnesses to corner location:

Garold A. Sime, R.L.S.

Bryan H. Meyer



SURVEY CONTROL ORDER

Horizontal	_____
Vertical	_____

WISCONSIN COORDINATE SYSTEM

Corner	East (X)	North (Y)	Elevation (Z)	Zone
Control Sta. Name				

~~City, Village~~ or Town Wilton  
County of Monroe