

CERTIFICATE

CERTIFIED LAND CORNER

No. 57

21601162000

I, Garold A. Sime, do hereby certify that on the 13<sup>th</sup> day of June 1986, I found (evidence) ~~(no evidence)~~ of the W<sup>1</sup>/<sub>4</sub> corner of Sec. 15, T 16 N, R 1W Fourth Principal Meridian, and I re-established said corner according to the Wisconsin Statutes as shown and described hereon.

Dated this 13<sup>th</sup> day of June 1986.

Garold A. Sime  
Deputy County Surveyor  
Title

History of corner establishment since Original Government Survey

O.R. Dahl was at this corner in June of 1869. Kenyon established this corner in April of 1892.

Description of corner evidence found:

I found Kenyon's Northwest bearing tree and used same to monument the W<sup>1</sup>/<sub>4</sub> corner of Section 15.

Description of corner and witness monuments, references and accessories used to perpetuate the original or re-established location of this corner:

Set nail in root of Kenyon's Bearing Tree as corner  
Set Harrison Monument 1.37 feet East of nail as witness

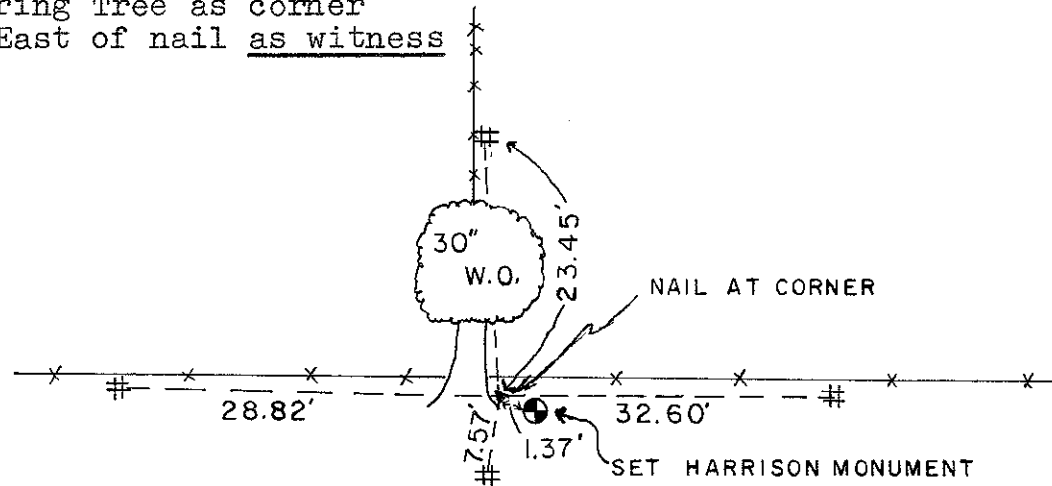
Witnesses to corner location:

Garold A. Sime, R.L.S.

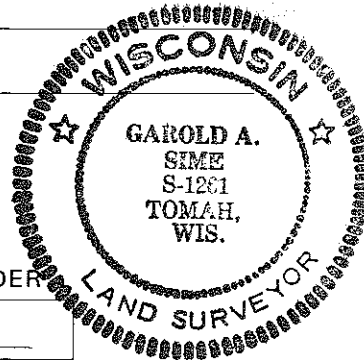
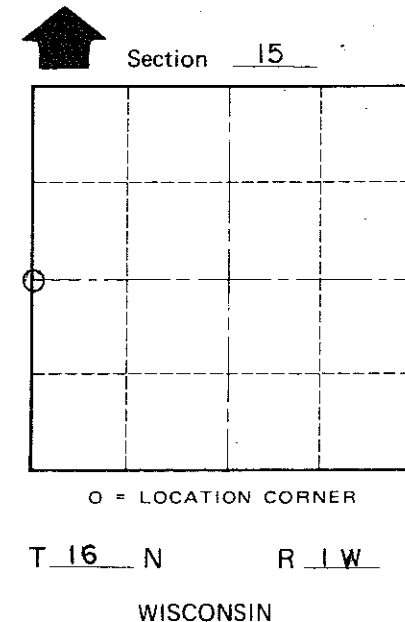
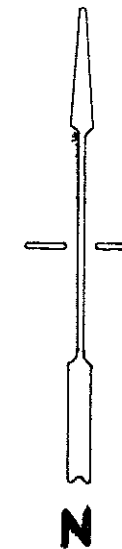
Bryan H. Meyer, R.L.S.

Dallas Wilhite

Joel Tralmer



# = Set 3/4" x 24" I.B.



COUNTY SURVEYOR FORM NO. 1

SURVEY CONTROL ORDER

Horizontal \_\_\_\_\_  
Vertical \_\_\_\_\_

WISCONSIN COORDINATE SYSTEM

Corner	East (X)	North (Y)	Elevation (Z)	Zone
Control Sta. Name				

City, Village or Town Wilton  
County of Monroe