

CERTIFICATE

CERTIFIED LAND CORNER

No. 57B

21601152020

I, William C. Jung, do hereby certify that on the 24th day of October 1977, I found (evidence) (~~no evidence~~) of the C 1/4 corner of Section 15, T16 N, R 1 W Fourth Principal Meridian, and I re-established said corner according to the Wisconsin Statutes as shown and described hereon.

History of original corner establishment:

Hamilton La Rue set this corner in an irregular fashion in 1897.

Description of corner evidence found:

Found the rotted stump remains of La Rue's bearing tree of 1897. Reset corner after allowing for declination and tree size. It appears that La Rue may have set this corner too far North.

Dated this 11th day of Nov. 1977.

William C. Jung, R.L.S. 1323

Crew Chief, County Surveyor's
Title Office

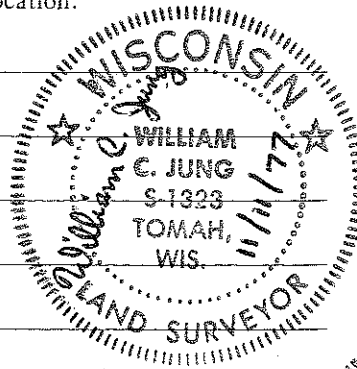
Description of corner and witness monuments, references and accessories used to perpetuate the original or re-established location of this corner:

Set a 1 1/4" x 30" iron bar.

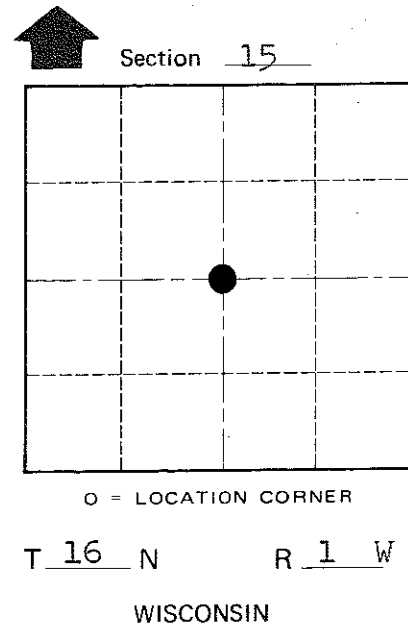
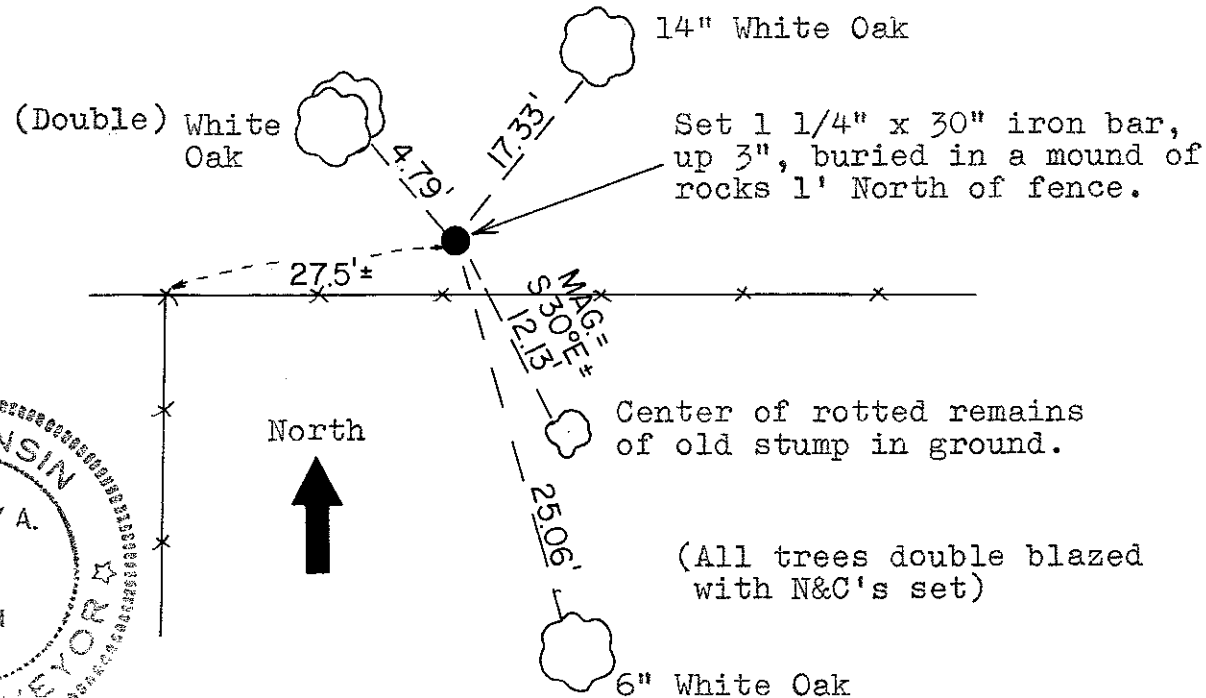
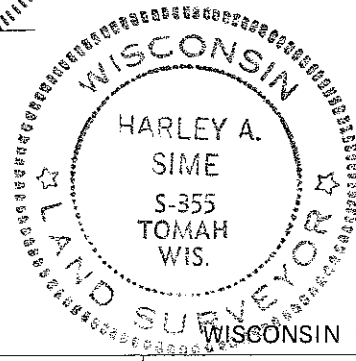
Witnesses to corner location:

W. C. Jung

G. Dechant



Approved: Harley Sime
County Surveyor



COUNTY SURVEYOR FORM NO. 1

SURVEY CONTROL ORDER

Horizontal _____

Vertical Scaled Elev.

Corner	East (X)	North (Y)	Elevation (Z)	Zone
			1270' ±	
Control Sta. Name				

City, Village or Town Wilton
County of Monroe