

**CERTIFICATE**

I, Laurence E Johns III, do hereby certify that on the 20th day of May, 2008, I found (evidence) ~~(no evidence)~~ of the S 1/4 corner of Section 12, T16N, R1W, Fourth Principle Meridian, and I re-established said corner according to the Wisconsin Statutes as shown and described hereon.

Dated this 25th day of May, 2008.

*Laurence E. Johns III*  
 Laurence E Johns III RLS 2804  
 Eagle Ridge Surveying  
 PO Box 213  
 Wilton, WI 54670

**CERTIFIED LAND CORNER**

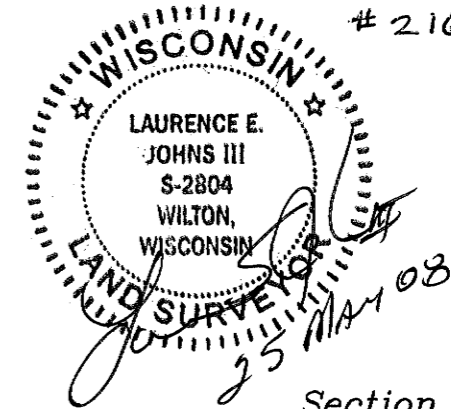
No. 42  
 # 21601120020

History of corner establishment since Original Government Survey

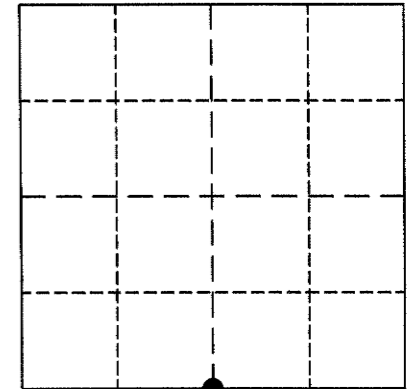
*None since original government survey.*

Description of corner evidence found:

*Set a Harrison Monument on the West side of a 3-Way Fence Corner.  
 This fence corner is 6' West and 4' South of the straight line split between the SE and SW Corners of Section 12.  
 Accepted this corner as the best available evidence of the original corner.*



Section 12



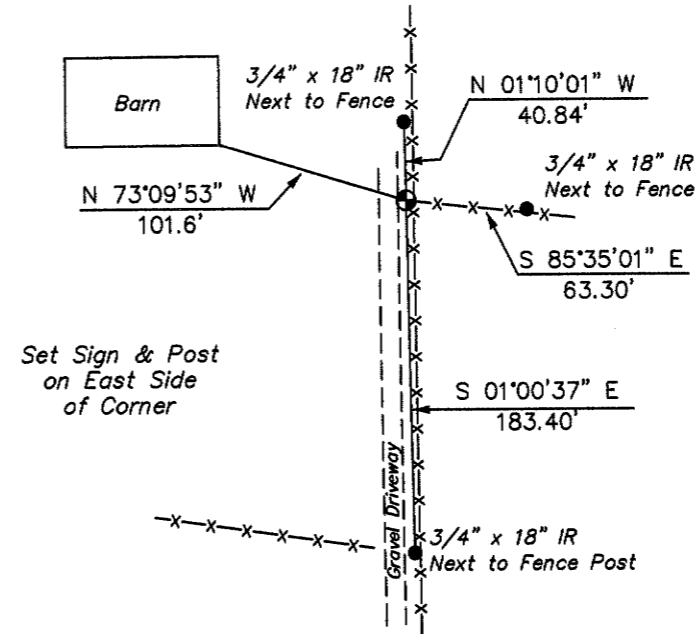
● = LOCATION CORNER  
 T16N R1W  
 WISCONSIN

COUNTY SURVEYOR FORM NO. 1

Description of corner and witness monuments, references and accessories used to perpetuate the original or re-established location of this corner:

Witness to corner location:

\_\_\_\_\_  
 Laurence E Johns III  
 \_\_\_\_\_  
 Larry Handschy  
 \_\_\_\_\_  
 \_\_\_\_\_  
 \_\_\_\_\_



Set Sign & Post on East Side of Corner

**SURVEY CONTROL ORDER**

Horizontal   
 Vertical

**MONROE COUNTY COORDINATE SYSTEM**

Corner	East (X)	North (Y)	Elevation (Z)	Zone
21601120020 Corner	723151.821	353025.832		
Control Sta. Name 13-161W	722539.292	348962.575		

City, Village or Town of Wilton  
 County of Monroe