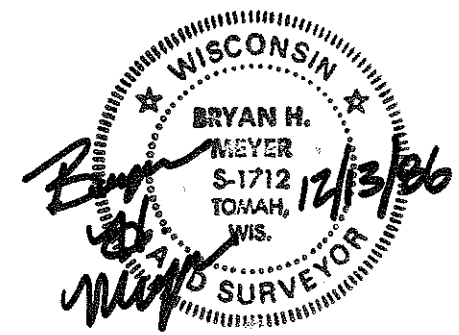


CERTIFICATE

CERTIFIED LAND CORNER

No. 39

21601112000



I, Bryan H. Meyer, do hereby certify that on the 5th day of August 1986, I found (evidence) ~~no evidence~~ of the East 1/4 corner of Section 11, T 16 N, R 1 W Fourth Principal Meridian, and I re-established said corner according to the Wisconsin Statutes as shown and described hereon.

Dated this 13th day of Dec. 1986.

Bryan H. Meyer
Deputy County Surveyor
Title

History of corner establishment since Original Government Survey
Webster Kenyon was at this corner in April of 1892.

Description of corner evidence found:

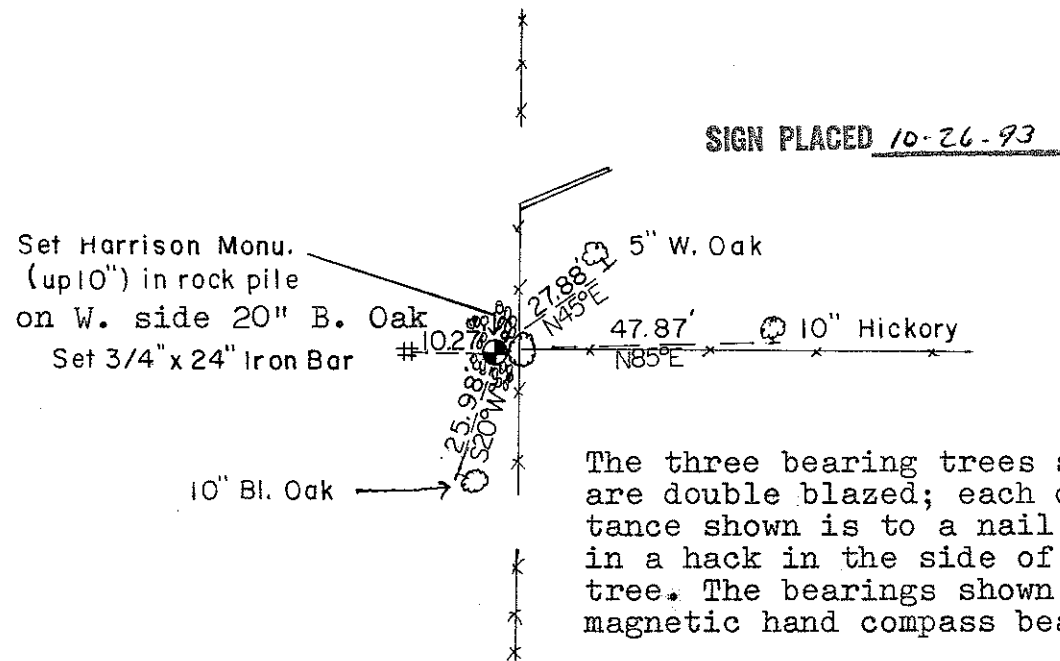
I accepted the three-way fence corner as the best available evidence.

COUNTY SURVEYOR FORM NO. 1

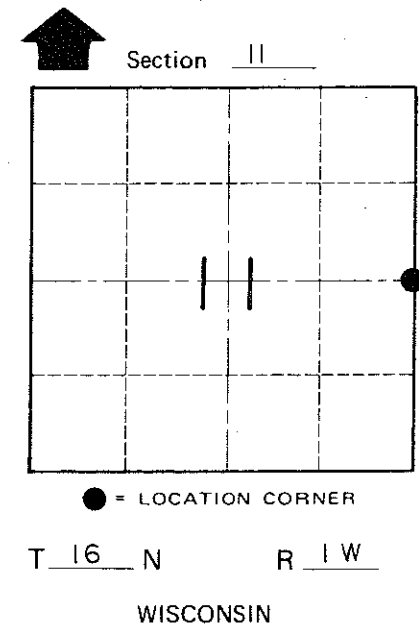
Description of corner and witness monuments, references and accessories used to perpetuate the original or re-established location of this corner:

Crew: Wilhite, Tralmer
Date: August 5, 1986
Weather: 80°+
Witnesses to corner location:

Dallas Wilhite
Joel Tralmer
Bryan H. Meyer



The three bearing trees shown are double blazed; each distance shown is to a nail set in a hack in the side of each tree. The bearings shown are magnetic hand compass bearings.



SURVEY CONTROL ORDER

Horizontal	_____
Vertical	_____

WISCONSIN COORDINATE SYSTEM

Corner	East (X)	North (Y)	Elevation (Z)	Zone
Control Sta. Name				

~~Village~~ Town of Wilton

County of Monroe