

CERTIFICATE

CERTIFIED LAND CORNER

No. 38

21601102000

I, Bryan H. Meyer, do hereby certify that on the 5th day of August 1986, I found (evidence) ~~XXXXXXXXXX~~ of the West 1/4 corner of Section 11, T 16 N, R 1 W Fourth Principal Meridian, and I re-established said corner according to the Wisconsin Statutes as shown and described hereon.

Dated this 13th day of Dec. 1986.

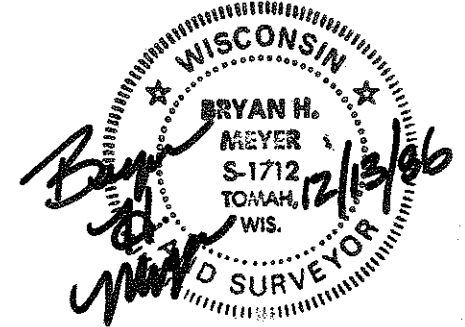
Bryan H. Meyer
Deputy County Surveyor
Title

History of corner establishment since Original Government Survey

James J. Carroll was here in December of 1976 and set a 1" iron pipe.

Description of corner evidence found:

I found Mr. Carroll's 1" iron pipe and accepted it as the corner.



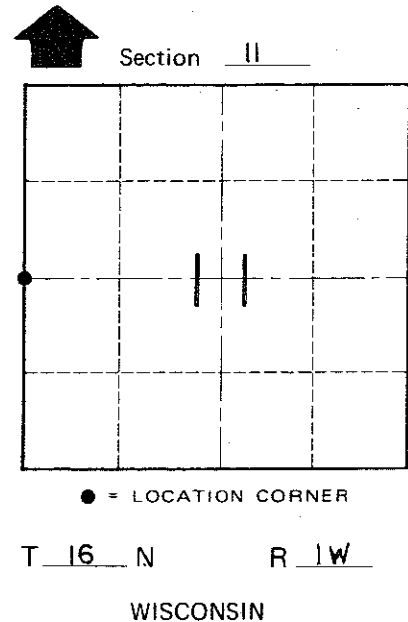
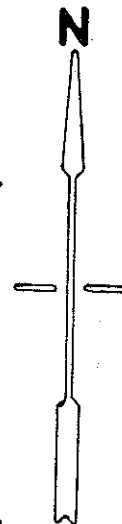
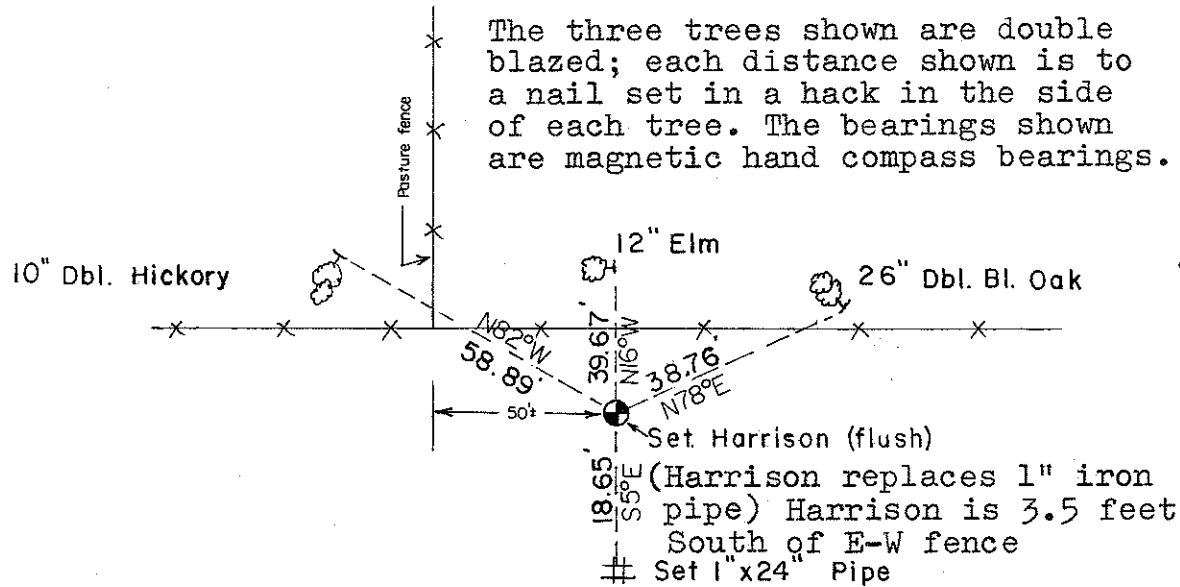
COUNTY SURVEYOR FORM NO. 1

Description of corner and witness monuments, references and accessories used to perpetuate the original or re-established location of this corner:

Crew: Wilhite, Tralmer
Date: August 5, 1986
Weather: 80°+

Witnesses to corner location:

Bryan Meyer
Dallas Wilhite
Joel Tralmer



SURVEY CONTROL ORDER

Horizontal	_____
Vertical	_____

WISCONSIN COORDINATE SYSTEM

Corner	East (X)	North (Y)	Elevation (Z)	Zone
Control Sta. Name				

~~City, Village or~~ Town of Wilton
County of Monroe