

21601100000

I, William C. Jung, do hereby certify that on the 25th day of October 1977, I found (evidence) (no evidence) of the N.W. Cor. corner of Section 14, T 16 N, R 1 W, Fourth Principal Meridian, and I re-established said corner according to the Wisconsin Statutes as shown and described hereon.

Dated this 11th day of Nov. 1977.

William C. Jung, R.L.S. 1323

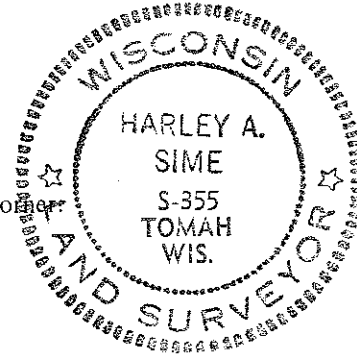
Crew Chief, County Surveyor's Office

History of original corner establishment:

O. R. Dahl was at this corner in 1869, as was Hamilton La Rue in 1897. James Carroll used this corner also in a recent survey.

Description of corner evidence found:

Accepted an old fence corner location as best available evidence. Fits the existing evidence in Sections 14 and 15 very well. James Carroll used this corner also in a recent survey. Removed his spike and set Harrison.



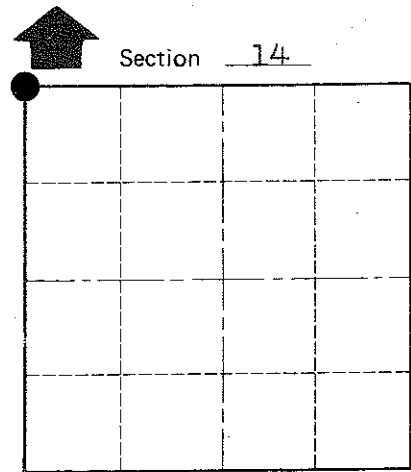
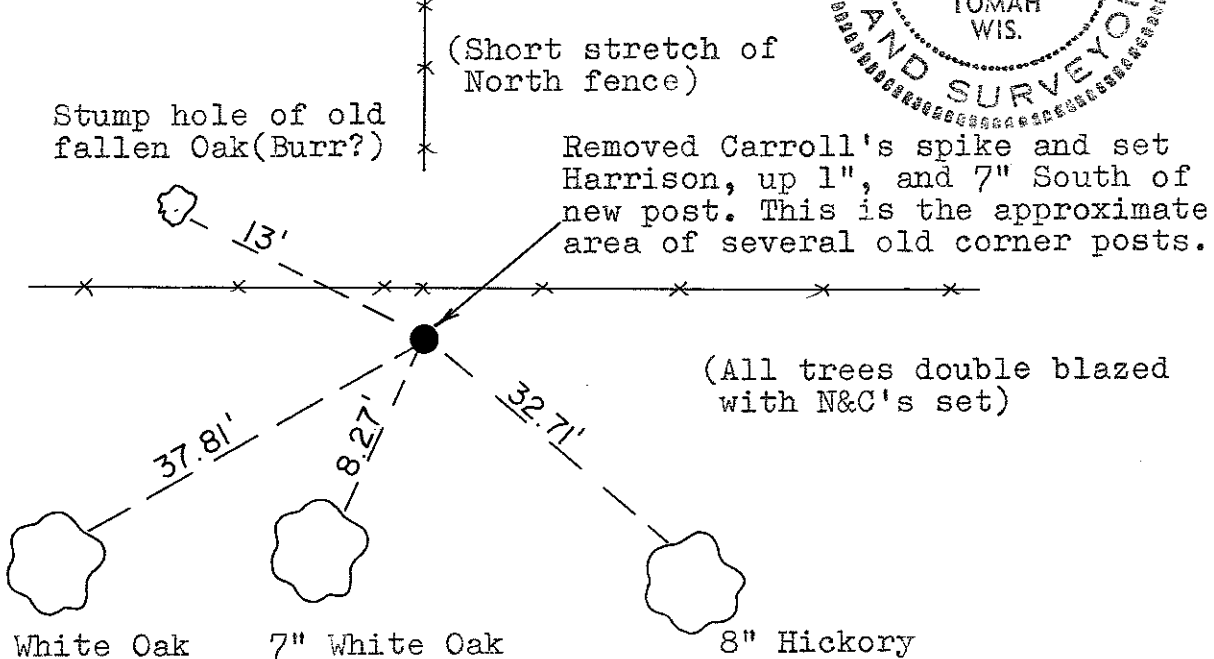
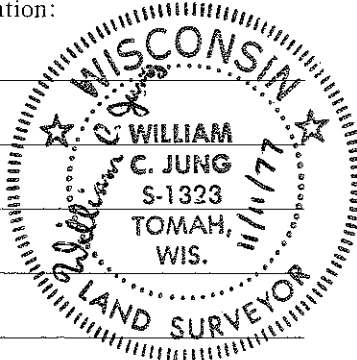
Description of corner and witness monuments, references and accessories used to perpetuate the original or re-established location of this corner:

Set a Harrison marker.

Witnesses to corner location:

W. C. Jung

G. Dechant



O = LOCATION CORNER

T 16 N R 1 W

WISCONSIN

Approved: Harley Sime, County Surveyor

SURVEY CONTROL ORDER

Horizontal	_____
Vertical	Scaled Elev.

WISCONSIN COORDINATE SYSTEM

Corner	East (X)	North (Y)	Elevation (Z)	Zone
	1875107.092	682321.720	1160' ±	SOUTH
Control Sta. Name				

City, Village or Town Wilton

County of Monroe

COUNTY SURVEYOR FORM NO. 1