

CERTIFICATE

CERTIFIED LAND CORNER

No. 37

21601092000

I, Gary L. Dechant, do hereby certify that on the 26th day of April 1984, I found (evidence) (no evidence) of the E 1/4 corner of Section 9, T 16 N, R 1 W Fourth Principal Meridian, and I re-established said corner according to the Wisconsin Statutes as shown and described hereon.

Dated this 27th day of April 1984.

Gary L. Dechant

Reg. Land Surveyor, S-1744 Title

History of corner establishment since Original Government Survey

No known history of this corner since the original government survey.

Description of corner evidence found:

Accepted fence corner as the best available evidence of the corner as it fits conditions well.

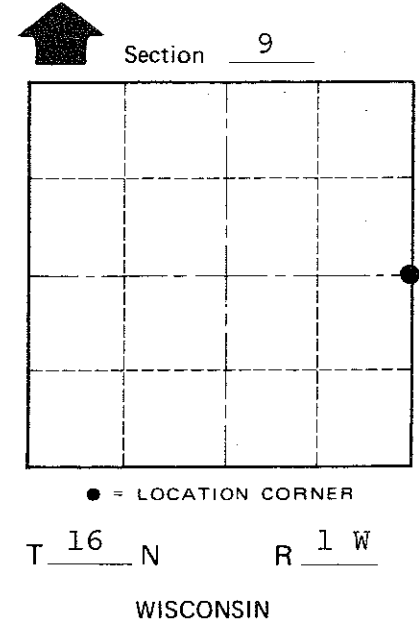
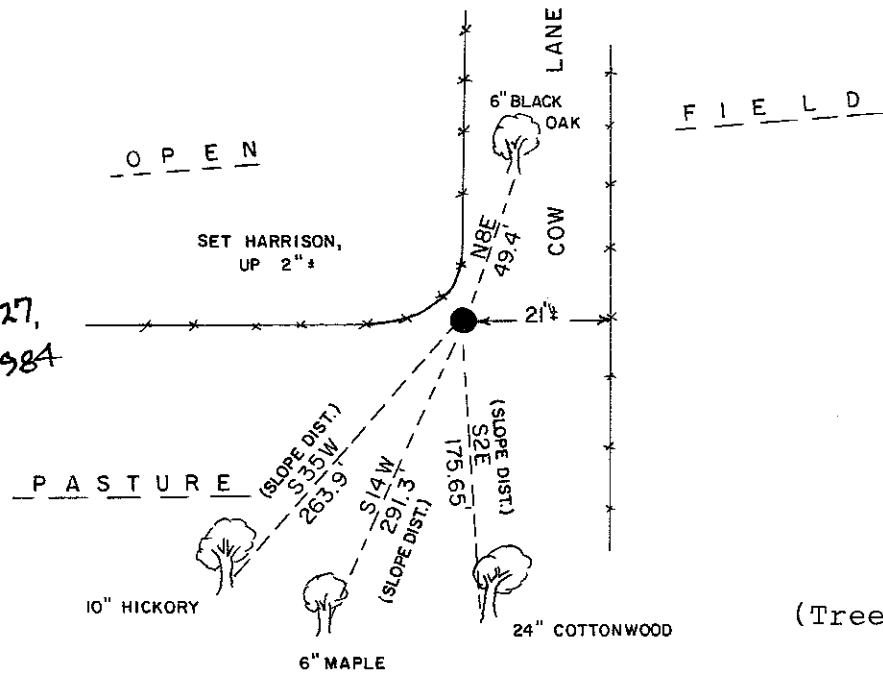
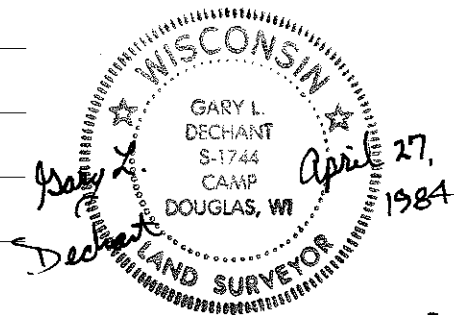
COUNTY SURVEYOR FORM NO. 1

Description of corner and witness monuments, references and accessories used to perpetuate the original or re-established location of this corner:

Witnesses to corner location:

Lawrence A. Feddersen, S-1226

Gary L. Dechant



(Trees double blazed, scribed, N&C's set)

SURVEY CONTROL ORDER

Table with 2 rows: Horizontal, Vertical

WISCONSIN COORDINATE SYSTEM

Table with 5 columns: Corner, East (X), North (Y), Elevation (Z), Zone

City, Village or Town Wilton
County of Monroe