

CERTIFICATE

CERTIFIED LAND CORNER

No. 50

21601080020

I, Garold A. Sime, do hereby certify that on the 31st day of October 1985, I found ~~(evidence)~~ (no evidence) of the N¼ corner of Section 17, T16 N, R1 W Fourth Principal Meridian, and I re-established said corner according to the Wisconsin Statutes as shown and described hereon.

Dated this 10 day of Feb. 1986.

Garold A. Sime
Deputy County Surveyor
Title

History of corner establishment since Original Government Survey

Fred Holden was at this corner in March of 1902.
O.R. Dahl was at this corner in April of 1868.

Description of corner evidence found:

I set this corner on line and equidistant between the Northeast and Northwest corners of Section 17.

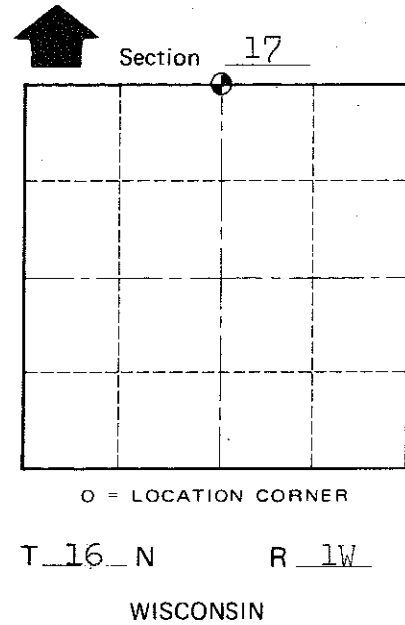
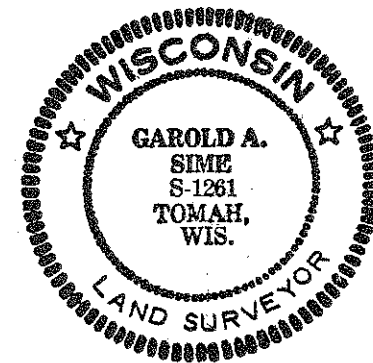
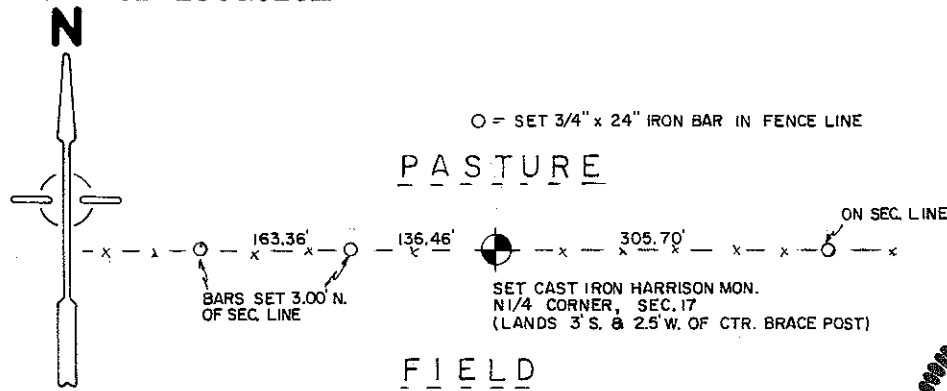
COUNTY SURVEYOR FORM NO. 1

Description of corner and witness monuments, references and accessories used to perpetuate the original or re-established location of this corner:
Set Cast Iron Harrison Monument at corner location

Witnesses to corner location:

Garold A. Sime, R.L.S.

Bryan H. Meyer



SURVEY CONTROL ORDER

Horizontal _____
Vertical _____

WISCONSIN COORDINATE SYSTEM

| Corner | East (X) | North (Y) | Elevation (Z) | Zone |
|-------------------|----------|-----------|---------------|------|
| Control Sta. Name | | | | |

City, Village or Town Wilton
County of Monroe