

CERTIFICATE

CERTIFIED LAND CORNER

No. 35

21601072000

I, Garold A. Sime, do hereby certify that on the 31st day of October 1985, I found ~~(evidence)~~ (no evidence) of the E/4 corner of Section 7, T 16 N, R 1W Fourth Principal Meridian, and I re-established said corner according to the Wisconsin Statutes as shown and described hereon.

**History of corner establishment since Original Government Survey**  
O.R. Dahl was at this corner in Nov. 1868.  
Fred Holden was at this corner in March of 1902 and in April of 1907.

Dated this 11 day of Feb. 1986.

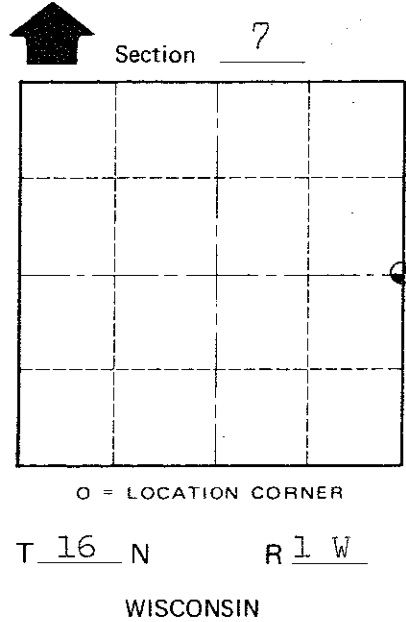
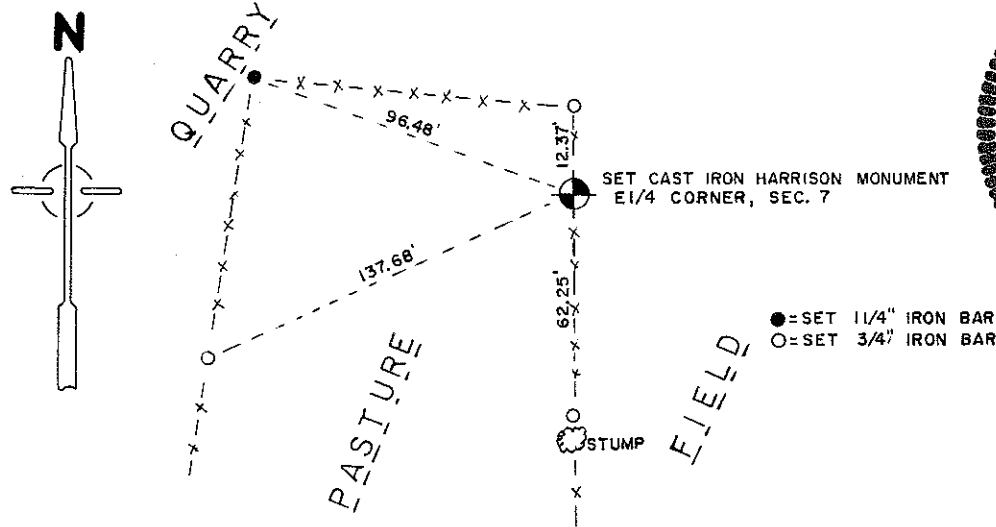
Description of corner evidence found:  
I set this corner at the intersection of the East - West Quarter line with the existing north south fence line.

Garold A. Sime  
Deputy County Surveyor  
Title

COUNTY SURVEYOR FORM NO. 1

Description of corner and witness monuments, references and accessories used to perpetuate the original or re-established location of this corner:  
Set Cast Iron Harrison Monument in fence line.

Witnesses to corner location:  
Bryan H. Meyer



SURVEY CONTROL ORDER

Horizontal	_____
Vertical	_____

WISCONSIN COORDINATE SYSTEM

Corner	East (X)	North (Y)	Elevation (Z)	Zone
Control Sta. Name				

City, Village or Town Wilton  
County of Monroe