

CERTIFICATE

CERTIFIED LAND CORNER

No. 52

21601070020

I, Garold A. Sime, do hereby certify that on the 4th day of April 19 83, I found ~~(evidence)~~ (no evidence) of the S 1/4 corner of Sec. 7, T 16 N, R 1 W Fourth Principal Meridian, and I re-established said corner according to the Wisconsin Statutes as shown and described hereon.

Dated this 19 day of Jan. 19 84.

Garold A. Sime
Deputy County Surveyor
Title

History of corner establishment since Original Government Survey

O.R. Dahl was here in Nov. 1868 & Fred Holden was here in April, 1907

Description of corner evidence found:

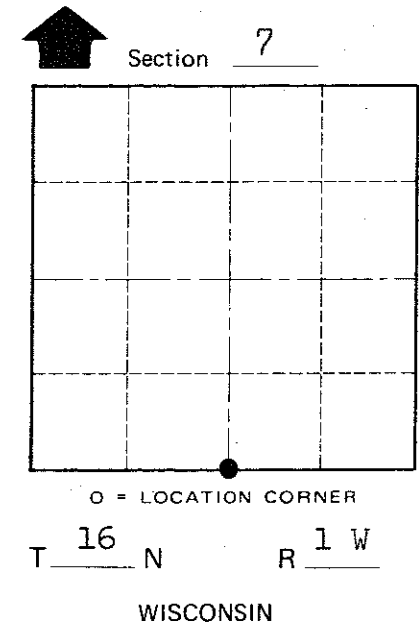
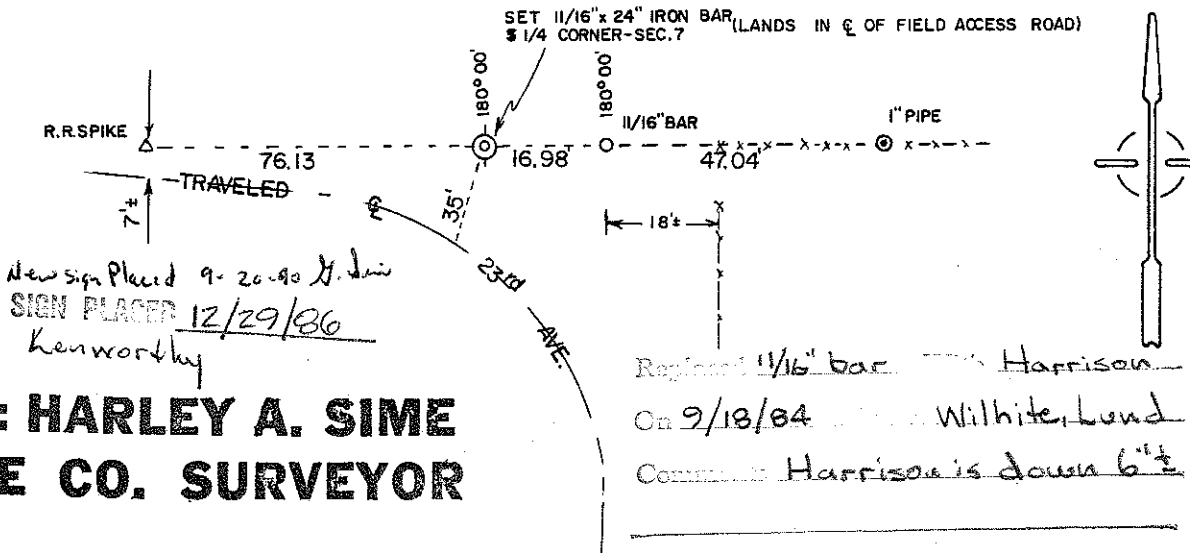
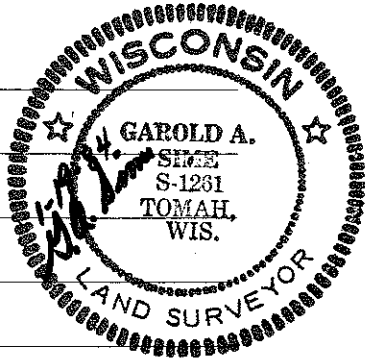
I set this corner on line with the existing fence line to the east and intersecting the projection of said fence with the North - South 1/4 line which is established from the N 1/4 corner of said Section thru the existing C 1/4 corner.

Description of corner and witness monuments, references and accessories used to perpetuate the original or re-established location of this corner:

Set 11/16" x 24" iron bar at corner.

Witnesses to corner location:

Garold A. Sime
Dallas Wilhite



Approved: **HARLEY A. SIME**
MONROE CO. SURVEYOR

SURVEY CONTROL ORDER

Horizontal _____
Vertical _____

WISCONSIN COORDINATE SYSTEM

Corner	East (X)	North (Y)	Elevation (Z)	Zone
Control Sta. Name				

City, Village or Town Wilton
County of Monroe

COUNTY SURVEYOR FORM NO. 1