

21601060020

I, Garold A. Sime, do hereby certify that on the 22nd day of August 1983, I found (evidence) (~~no evidence~~) of the N/4 corner of Section 7, T 16 N, R 1 W Fourth Principal Meridian, and I re-established said corner according to the Wisconsin Statutes as shown and described hereon.

Dated this 19th day of Jan. 1984.

Garold A. Sime

Deputy County Surveyor

Title

History of corner establishment since Original Government Survey

O. R. Dahl was here in Nov. 1868 and Fred Holden was at this corner in April of 1907

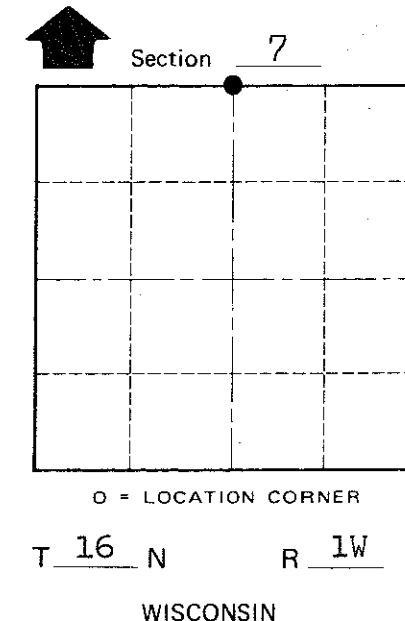
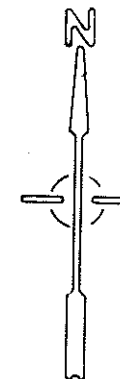
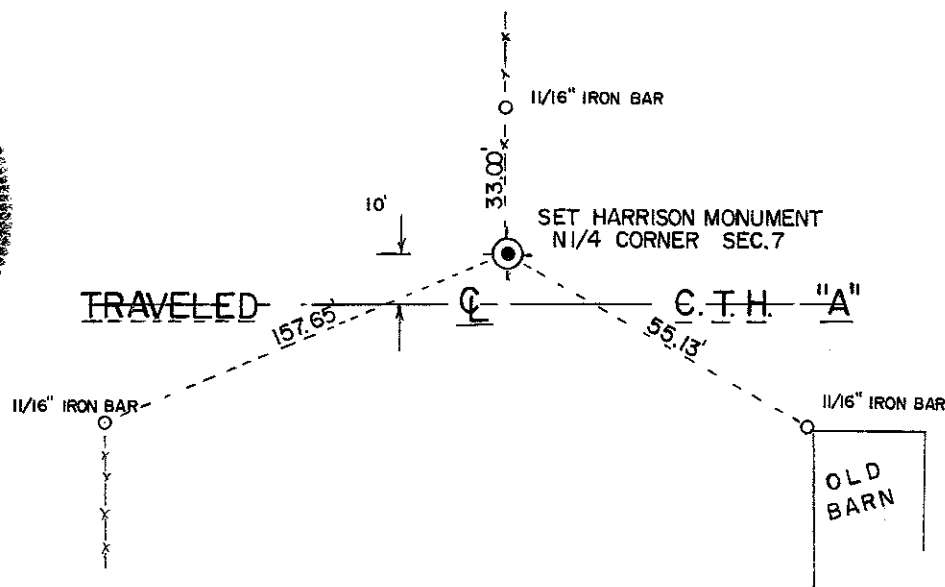
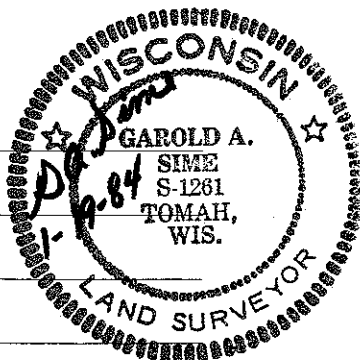
Description of corner evidence found:

Set this corner on line between existing section corners and on line with the existing fence line to the North.

Description of corner and witness monuments, references and accessories used to perpetuate the original or re-established location of this corner:

Witnesses to corner location:

Garold Sime  
Dallas Wilhite



Approved: **HARLEY A. SIME**  
**MONROE CO. SURVEYOR**

WISCONSIN COORDINATE SYSTEM

SURVEY CONTROL ORDER

Horizontal \_\_\_\_\_  
Vertical \_\_\_\_\_

Corner	East (X)	North (Y)	Elevation (Z)	Zone
Control Sta. Name				

SIGN PLACED 12/23/86  
Kenworthy, Set sign 18\"/>

~~City, Village~~ or Town of Wilton  
County of Monroe

COUNTY SURVEYOR FORM NO. 1