

21601060000

I, Harley A. Sime, do hereby certify that on the twentieth day of April 1981, I found (evidence) ~~removed~~ of the Southwest corner of Section 5, T 16 N, R 1W Fourth Principal Meridian, and I re-established said corner according to the Wisconsin Statutes as shown and described hereon.

Dated this 14th day of Aug. 1981.

Harley A. Sime

Monroe County Surveyor

Approved: HARLEY A. SIME
MONROE CO. SURVEYOR

History of corner establishment since Original Government Survey

O.R. Dahl was here in April and November of 1868, Schroeder was here in June of 1886, F.A. Holden was here in March of 1902 and set a 3" Iron Pipe at this corner, he was also here in April of 1907.

Description of corner evidence found:

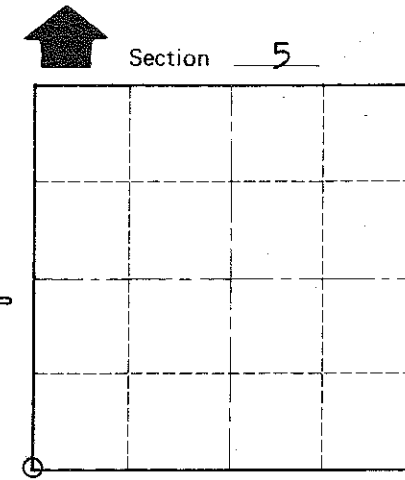
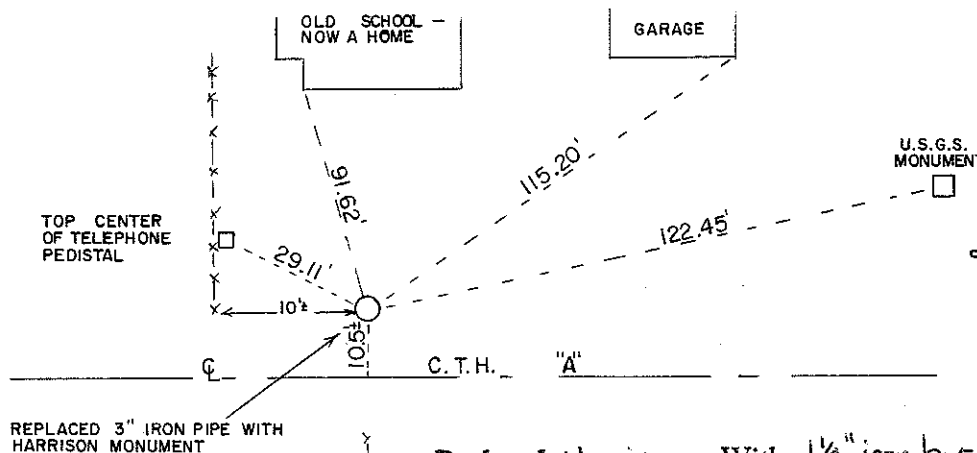
Found Holdens 3" Iron Pipe on north edge of C.T.H. "A" and replaced it with a Harrison Monument.

Description of corner and witness monuments, references and accessories used to perpetuate the original or re-established location of this corner:

Witnesses to corner location:

Bryan H. Meyer - Crew Chief

Carlton R. Pietz



O = LOCATION CORNER

T 16 N R 1 W

WISCONSIN

Replaced Harrison With 1/4" iron bar
On 6/13/86. Crew: Wilhite, Tralmer
Comments Removed Harrison on 8/21/85
due to road construction. A 1/4"
iron bar was set instead of a
Harrison so as not to tear-up
new hot mix road. B.M.

SIGN PLACED 12/23/86
Kenworthy, Set sign
42' S. of corner.

WISCONSIN COORDINATE SYSTEM

SURVEY CONTROL ORDER

Horizontal	_____
Vertical	_____

Corner	East (X)	North (Y)	Elevation (Z)	Zone
Control Sta. Name				

~~City, Village or Town~~ Wilton
County of Monroe

COUNTY SURVEYOR FORM NO. 1